

Supplement for BNP Level Predicts Major Bleeding Events in Patients with Heart Failure After Percutaneous Coronary Intervention

Otsuka Y, et al.

CONTENTS

Supplementary Figure 1. Study flowchart of CLIDAS

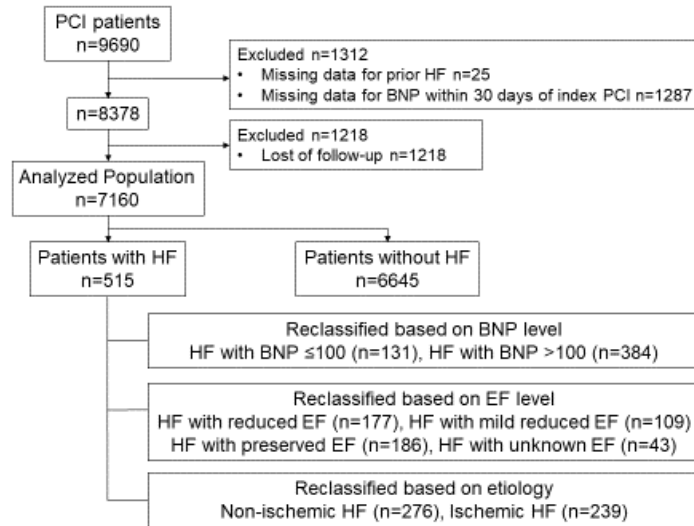
Supplementary Figure 2. Study flowchart of T-TAS

Supplemental Figure 3. Kaplan–Meier estimates of bleeding events (GUSTO severe/moderate) between the HF and non-HF groups

Supplemental Table.1 Baseline patient characteristics

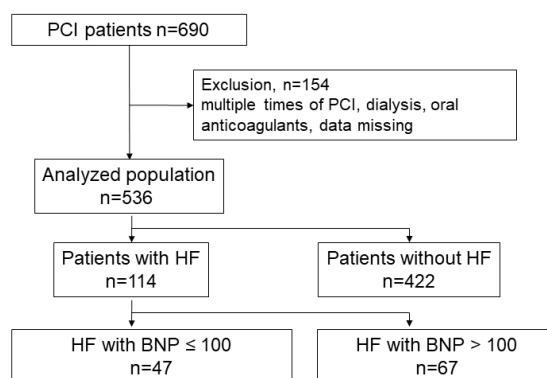
Supplemental Table 2. Types of bleeding events during 3-year follow-up in patients with and without HF

Supplementary Table 3. Types of bleeding events during 3-year follow-up according to severity of HF



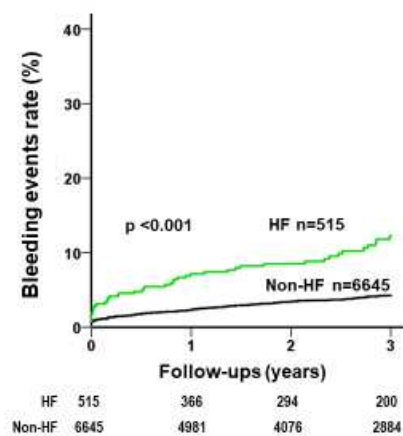
Supplemental Figure 1. Study flowchart of CLIDAS.

CLIDAS, Clinical Deep Data Accumulation System; PCI, percutaneous coronary intervention; HF, heart failure; EF, ejection fraction



Supplemental Figure 2. Study flowchart of T-TAS

T-TAS, Total Thrombus-Formation Analysis System; HF, heart failure; BNP, B-type natriuretic peptide



Supplemental Figure 3. Kaplan–Meier estimates of bleeding events (GUSTO severe/moderate) between the HF and non-HF groups

GUSTO, Global Use of Streptokinase and t-PA for Occluded Coronary Arteries; HF, heart failure;

Supplemental Table.1 Baseline patient characteristics

	Patients without HF N = 6,645	Patients with HF N = 515	p-value
Age	71 (64, 78)	75 (66, 80)	<0.001
Male	5,183 (78%)	367 (71%)	<0.001
BMI	23.9 (21.8, 26.3)	23.1 (20.6, 25.6)	<0.001
SBP at discharge	118 (106, 130)	115 (100, 128)	<0.001
DBP at discharge	64 (58, 72)	60 (54, 68)	<0.001
PR at discharge	67 (60, 75)	70 (62, 78)	<0.001
ACS	3,086 (46%)	143 (28%)	<0.001
Hypertension	5,508 (83%)	457 (89%)	<0.001
Dyslipidemia	5,224 (79%)	383 (74%)	0.02
Diabetes	2,806 (42%)	294 (57%)	<0.001
Smoking	1,367 (21%)	91 (18%)	0.24
missing data	3,056 (46%)	241 (47%)	
CKD (eGFR <60)	2,917 (47%)	379 (76%)	<0.001
missing data	417 (6%)	14 (3%)	
eGFR	62 (48, 74)	44 (21, 60)	<0.001
Hemodialysis	372 (5.6%)	76 (15%)	<0.001
Family_history_of_CVD	1,409 (21%)	92 (18%)	0.039
missing data	1,279 (19%)	91 (18%)	
Malignancy	610 (9.6%)	62 (13%)	0.022
Previous_MI	951 (14%)	143 (28%)	<0.001
Previous_PCI	1,322 (20%)	161 (31%)	<0.001
Previous_CABG	331 (5.0%)	82 (16%)	<0.001
Previous_Stroke	759 (11%)	80 (16%)	0.005
Atrial_Fibrillation	272 (4.1%)	68 (13%)	<0.001
Peripheral_artery_disease	518 (8.7%)	70 (15%)	<0.001
Culprit lesion			
RCA	3,386 (54%)	282 (59%)	0.034
LAD	4,567 (73%)	360 (76%)	0.24
LCX	2,733 (44%)	242 (51%)	0.003
LMT	492 (7.9%)	52 (11%)	0.019
missing data	415 (6.2%)	40 (7.8%)	
MVD	3,378 (51%)	299 (58%)	0.002
BNP	51 (21, 134)	231 (98, 504)	<0.001
HF with BNP over 100	0 (0%)	384 (75%)	<0.001
EF	61 (51, 67)	45 (32, 56)	<0.001
missing data	1,175 (18%)	43 (8.3%)	
EF category			<0.001
<40	532 (9.7%)	177 (38%)	
≥50	4,211 (77%)	186 (39%)	
40-49	727 (13%)	109 (23%)	
Anticoagulant	791 (12%)	144 (28%)	<0.001
DOAC	308 (4.6%)	60 (12%)	<0.001
Warfarin	501 (7.5%)	87 (17%)	<0.001
DAPT	5,683 (86%)	427 (83%)	0.11
Aspirin	6,152 (93%)	471 (92%)	0.35
P2Y12 inhibitor	6,047 (91%)	456 (89%)	0.063
PPI	5,456 (82%)	425 (83%)	0.81

Data are mean±SD, or n (%). Data for this parameter were measured at admission.

BMI indicates body mass index, SBP; systolic blood pressure, DBP; diastolic blood pressure, PR; pulse rate, ACS; acute coronary syndrome, CKD; chronic kidney disease, eGFR; estimated glomerular filtration rate, CVD; coronary vessel disease, MI, myocardial infarction, PCI; percutaneous coronary intervention, CABG; coronary artery bypass grafting RCA; right coronary artery, LAD; left anterior descending artery, LCX; left circumflex artery, LMT; left main trunk, MVD; multi vessel disease, BNP; B-type natriuretic peptide, EF; ejection fraction, DOAC; direct oral anticoagulants, DAPT; dual antiplatelet therapy, PPI; Proton pump inhibitor.

Supplemental Table 2. Types of bleeding events during 3-year follow-up in patients with and without HF

	Non-HF N=6645	HF N=515	p value
Bleeding events (GUSTO severe/moderate)	227 (3.4)	49 (9.5)	<0.001
ICH	53 (0.8)	12 (2.3)	0.002
GI bleeding	93 (1.4)	23 (4.5)	<0.001
Puncture site	47 (0.7)	8 (1.6)	0.058
Trauma	2 (0.03)	0 (0)	>0.99
Other	32 (0.5)	6 (1.2)	0.052

HF indicates heart failure, ICH; intracerebral hemorrhage and GI; gastrointestinal.

Supplemental Table 3. Types of bleeding events during 3-year follow-up according to severity of HF

	Non-HF N=6645	HF with BNP ≤100 N=131	HF with BNP >100 N=384	p value for trend
Bleeding events (GUSTO severe/moderate)				
ICH	227 (3.4)	9 (6.9)	40 (10.4)	<0.001
GI bleeding	53 (0.8)	2 (1.5)	10 (2.6)	<0.001
Puncture site	93 (1.4)	4 (3.1)	19 (4.9)	<0.001
Trauma	47 (0.7)	2 (1.5)	6 (1.6)	0.039
Other	2 (0.1)	0 (0)	0 (0)	0.703
	32 (0.5)	1 (0.8)	5 (1.3)	0.03

HF indicates heart failure, BNP; B-type natriuretic peptide, ICH; intracerebral hemorrhage and GI; gastrointestinal.