

Supplemental Table 1. International Classification of Diseases (ICD) codes

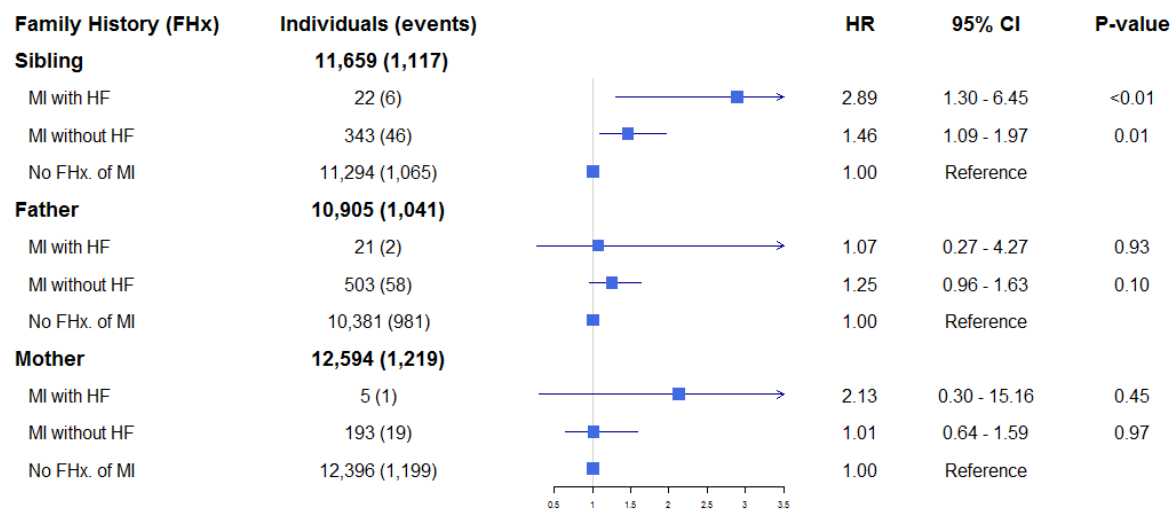
<b>Comorbidity</b>	<b>ICD-10 and ICD-8 codes</b>
<b>Diabetes</b>	ICD-10: E10-14 ICD-8: 250
<b>Hypertension</b>	ICD-10: I10-15 ICD-8: 400-403
<b>Peripheral vascular disease</b>	ICD-10: I70, I74 ICD-8: 440, 444
<b>Myocardial infarction</b>	ICD-10: I21, I22 ICD-8: 410
<b>Congestive heart failure</b>	ICD-10: I42, I50, I110, I130, I132, J819 ICD-8: 425, 428, 4270, 4271
<b>Atrial fibrillation</b>	ICD-10: I48 ICD-8: 42793, 42794
<b>Chronic kidney disease</b>	ICD-10: E102, E112, E132, E142, I120, N02-N08, N11, N12, N14, N18, N19, N26, N158-N160, N162-N164, N168, M300, M313, M319, M321B, Q612, Q613, Q615, Q619, T858, T859, Z992 ICD-8: 403, 404, 581-584, 25002, 40039, 59009, 59320, 75310, 75311, 75319
<b>Liver disease</b>	ICD-10: K70-77, K704, K711, K766, B150, B160, B190 ICD-8: 571, 572, 456
<b>Valve disease</b>	ICD-10: I05, I06, I08, I34, I35 ICD-8: 394, 395, 396

Supplemental Table 2. Anatomical Therapeutic Chemical (ATC) classification codes

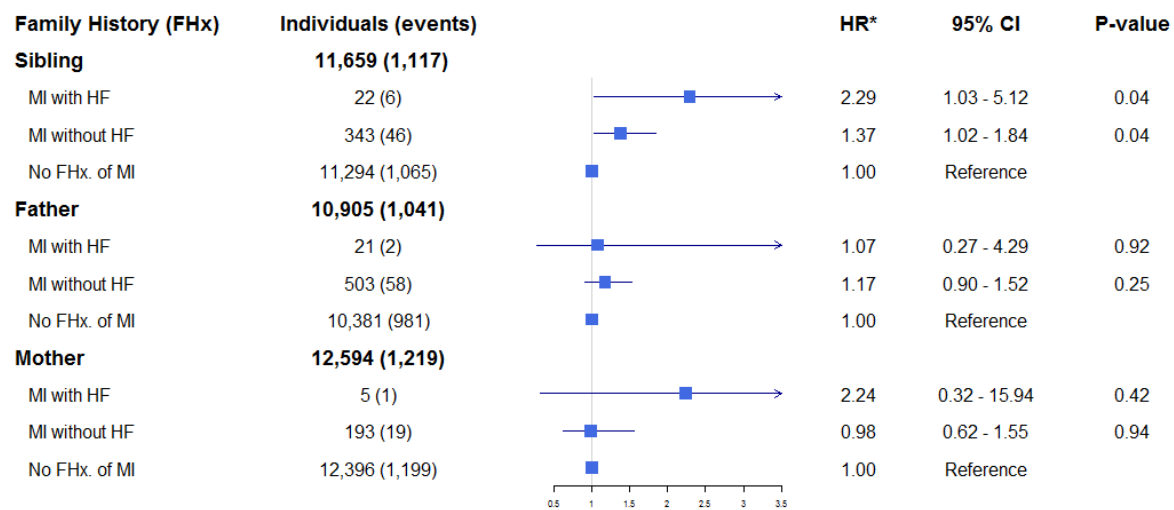
Pharmacotherapy	ATC codes
Beta-blockers	C07A, C07B, C07C, C07D, C07F
Calcium channel blockers	C08, C09BB, C09DB
Renin-angiotensin-system inhibitors	C09AA, C09BA, C09BB, C09CA, C09DA, C09DB, C09XA02, C09XA52
Vasodilator drugs	C02DB, C02DD, C02DG
$\alpha$ -adrenergic drugs	C02A, C02B, C02C
Non-loop diuretics	C02L, C02DA, C07B, C07D, C09XA52, C03A, C03EA, C03B, C03X, C07C, C08G, C09BA, C09DA, C03D, C03E, C03EB
Loop diuretics	C03C, C03EB
Statins	C10AA
Anti-diabetics	A10

Supplemental figure 1A-B. HRs for HF according to family history. Family history defined as MI at  $\leq 50$  years of age. Crude (1A) and adjusted (1B) for sex, age group, calendar year group, previous history of hypertension and diabetes.

### Suppl.1A



### Suppl.1B



Supplemental figure 2A-B. HRs for HF according to family history. Family history defined as MI at 51-80 years of age. Crude (2A) and adjusted (2B) for sex, age group, calendar year group, previous history of hypertension and diabetes.

### Suppl. 2A

Family History (FHx)	Individuals (events)		HR	95% CI	P-value
<b>Sibling</b>	<b>11,332 (1,072)</b>				
MI with HF	10 (2)		2.32	0.58 - 9.28	0.23
MI without HF	28 (5)		2.09	0.87 - 5.04	0.10
No FHx. of MI	11,294 (1,065)		1.00	Reference	
<b>Father</b>	<b>12,547 (1,192)</b>				
MI with HF	275 (35)		1.40	1.00 - 1.96	0.05
MI without HF	1,891 (176)		0.99	0.84 - 1.16	0.87
No FHx. of MI	10,381 (981)		1.00	Reference	
<b>Mother</b>	<b>13,452 (1,292)</b>				
MI with HF	147 (8)		0.57	0.29 - 1.15	0.12
MI without HF	909 (85)		0.97	0.78 - 1.21	0.77
No FHx. of MI	12,396 (1,199)		1.00	Reference	

### Suppl. 2B

Family History (FHx)	Individuals (events)		HR*	95% CI	P-value
<b>Sibling</b>	<b>11,332 (1,072)</b>				
MI with HF	10 (2)		1.57	0.39 - 6.29	0.53
MI without HF	28 (5)		1.59	0.66 - 3.83	0.30
No FHx. of MI	11,294 (1,065)		1.00	Reference	
<b>Father</b>	<b>12,547 (1,192)</b>				
MI with HF	275 (35)		1.39	0.99 - 1.94	0.06
MI without HF	1,891 (176)		0.98	0.83 - 1.15	0.76
No FHx. of MI	10,381 (981)		1.00	Reference	
<b>Mother</b>	<b>13,452 (1,292)</b>				
MI with HF	147 (8)		0.55	0.27 - 1.10	0.09
MI without HF	909 (85)		0.95	0.76 - 1.19	0.66
No FHx. of MI	12,396 (1,199)		1.00	Reference	