

Utility of T-wave amplitude as a non-invasive risk marker of sudden cardiac death in hypertrophic cardiomyopathy

Alan Sugrue,¹ Ammar M Killu,² Christopher V DeSimone,² Anwar A Chahal,³ Josh C Vogt,¹ Vaclav Kremen,^{2,4} JoJo Hai,² David O Hodge,² Nancy G Acker,² Jeffrey B Geske,² Michael J Ackerman,^{2,5} Steve R Ommen,² Grace Lin,² Peter A Noseworthy,² Peter A Brady²

To cite: Sugrue A, Killu AM, DeSimone CV, *et al.* Utility of T-wave amplitude as a non-invasive risk marker of sudden cardiac death in hypertrophic cardiomyopathy. *Open Heart* 2017;4:e000561. doi:10.1136/openhrt-2016-000561

Received 4 November 2016
Revised 18 November 2016
Accepted 22 November 2016

ABSTRACT

Objective: Sudden cardiac arrest (SCA) is the most devastating outcome in hypertrophic cardiomyopathy (HCM). We evaluated repolarisation features on the surface electrocardiogram (ECG) to identify the potential risk factors for SCA.

Methods: Data was collected from 52 patients with HCM who underwent implantable cardioverter defibrillator (ICD) implantation. Leads V2 and V5 from the ECG closest to the time of ICD implant were utilised for measuring the Tpeak-Tend interval (Tpe), QTc, Tpe/QTc, T-wave duration and T-wave amplitude. The presence of the five traditional SCA-associated risk factors was assessed, as well as the HCM risk-SCD score.

Results: 16 (30%) patients experienced aborted cardiac arrest over 8.5±4.1 years, with 9 receiving an ICD shock and 7 receiving ATP. On univariate analysis, T-wave amplitude was associated with appropriate ICD therapy (HR per 0.1 mV 0.79, 95% CI 0.56 to 0.96, p=0.02). Aborted SCA was not associated with a greater mean QTc duration, Tpeak-Tend interval, T-wave duration, or Tpe/QT ratio. Multivariate analysis (adjusting for cardinal HCM SCA-risk factors) showed T-wave amplitude in Lead V2 was an independent predictor of risk (adjusted HR per 0.1 mV 0.74, 95% CI 0.57 to 0.97, p=0.03). Addition of T-wave amplitude in Lead V2 to the traditional risk factors resulted in significant improvement in risk stratification (C-statistic from 0.65 to 0.75) but did not improve the performance of the HCM SCD-risk score.

Conclusions: T-wave amplitude is a novel marker of SCA in this high risk HCM population and may provide incremental predictive value to established risk factors. Further work is needed to define the role of repolarisation abnormalities in predicting SCA in HCM.

INTRODUCTION

Hypertrophic cardiomyopathy (HCM) is the most common inherited heart condition and the leading cause of sudden cardiac arrest (SCA) in young adults.^{1–3} Prevention of the lethal and tragic consequence of SCA is a critical objective in the clinical management of HCM. While implantable cardioverter

KEY QUESTIONS

What is already known about this subject?

► Prevention of sudden cardiac arrest (SCA) is a critical objective in the management of hypertrophic cardiomyopathy (HCM). While implantable cardioverter defibrillator (ICD) implantation for secondary prevention is well established, its role in primary prevention requires refinement due to current imperfect risk stratification. While we are cognizant that repolarisation abnormalities in HCM exist, their role in risk stratification is undefined.

What does this study add?

► Our study highlights the potential role for repolarisation abnormalities detected on the surface ECG in risk stratification. In particular, reduced T-wave amplitude was associated with an increased likelihood of aborted SCA. Further, T-wave amplitude may provide incremental prognostic value in predicting SCA when combined with the traditional risk factors.

How might this impact on clinical practice?

► This study demonstrates the potential to improve clinical risk stratification through the use of the easily obtainable and cost-effective surface ECG.

defibrillator (ICD) for secondary prevention is well established, its role in primary prevention requires refinement due to imperfect risk stratification. In current practice, clinical parameters (family history of SCA in ≥1 relative; ≥1 episode of unexplained syncope; non-sustained ventricular tachycardia (NSVT) on 24 hours ECG; blood pressure (BP) drop on exercise; ≥30 mm of maximal left ventricular (LV) wall thickness) are used to predict risk of SCA. Unfortunately, the validity and accuracy of these algorithms to predict SCA in individuals is limited^{4 5} resulting in inappropriate prophylactic ICD implantation and potentially denying others at risk who may not meet the criteria. Recently published



CrossMark

For numbered affiliations see end of article.

Correspondence to

Dr Peter Brady Division of Cardiovascular Disease Mayo clinic Rochester 200 1st SW, Rochester, MN, 55902, USA; brady.peter@mayo.edu

European guidelines significantly improve risk prediction using a composite HCM Risk-SCD calculator but still do not account for a direct characterisation of the electrical substrate.

It is well established that ventricular hypertrophy, the underlying substrate of HCM, is associated with cellular repolarisation abnormalities due in part to prominence of M-cell current, which, along with cellular hypertrophy, interstitial fibrosis and myocardial disarray predisposes to electrophysiological instability.⁶ Despite knowledge of repolarisation abnormalities in HCM^{7–8} their role in SCA risk has not been extensively studied, unlike other conditions such as arrhythmogenic right ventricular cardiomyopathy⁹ Brugada¹⁰ and long QT syndromes.¹¹ Therefore, the aim of our study was to determine whether non-invasive measurement of dynamic repolarisation characteristics derived from the surface ECG in patients with HCM may have incremental prognostic significance beyond the current risk markers.

METHODS

Study population

We selected all adult patients (≥ 18 years) with HCM who were evaluated at Mayo Clinic between 2000 and 2010 and underwent de novo ICD implantation based on current guidelines. Only patients who had ICD follow-up at our institution; baseline 12-lead ECG recorded within 8 weeks of ICD implantation; and no known coronary artery disease were included. Patients with a bundle branch block, paced rhythm or atrial fibrillation on the baseline ECG were excluded due to difficulties with measurement of repolarisation.

Clinical outcomes

Aborted SCA was defined in patients who received an appropriate ICD discharge for ventricular arrhythmia or had a non-fatal episode of ventricular fibrillation (VF) or spontaneous sustained ventricular tachycardia (VT) (>30 s in duration). Appropriate ICD therapy was defined as antitachycardia pacing (ATP) or shock due to tachyarrhythmia of ventricular origin, similar to previous studies.^{12–14}

T-wave analysis

All 12-lead ECGs were obtained within 8 weeks of ICD implantation using standard 10-lead placement recorded at 25 mm/s paper speed and 10 mm/mV amplitude. All measurements were made by a reviewer blinded to the outcome of ICD therapy (AS). ECGs were electronically reviewed in MUSE (General Electric Healthcare, Chicago, Illinois, USA) using digital calipers capable of measuring to within 1 ms. Specific measurements made were: T-wave duration, T-wave amplitude, Tpeak-Tend (Tpe) interval, QT interval and Tpe/QT ratio. Three consecutive beats using leads V2 and V5 were recorded and the average was calculated as described previously.^{15–16} Tpe was defined from peak of the T-wave to the end of the T-wave. The QT interval was measured from the earliest onset of the QRS complex to the end of the T-wave. The end of the T-wave was defined as the intersection of the tangent to the steepest downslope of the T-wave and isoelectric line (often referred to as the Lepschkin's method).^{17–18} See figure 1. When U waves were present, the QT interval was measured at the nadir of the curve between the T and U waves. The Tpe/QT ratio was then calculated as the ratio of Tpe in that leads to the corresponding QT interval.¹⁹ QT was corrected using Bazetts formula. T wave inversion was present in none of the V2 leads and in 13/52 of the V5 leads. If the T wave was negative, the amplitude derived was considered positive.

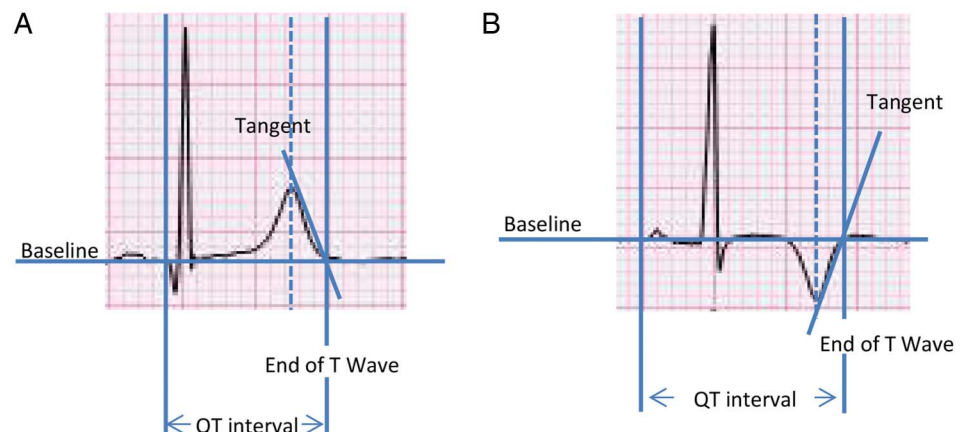
Echocardiographic data

Echocardiographic data was obtained from the echocardiogram most proximate to ICD implantation. Some of the recorded variables had missing values; Pulmonary artery systolic pressure n=16 (30.7%), E velocity n=1 (1.9%), A velocity n=5 (9.6%), Medial e' and lateral e' n=35 (67.3%).

Risk stratification

All patients met established criteria for ICD implantation in HCM.^{2–20–21} These included (1) A history of HCM-related sudden death in ≥ 1 first-degree or other relatives <50 years of age; (2) massive LV hypertrophy

Figure 1 T wave tangent method for ECG analysis.



≥30 mm; (3) NSVT (defined as ≥3 consecutive ventricular beats with rate ≥120 bpm) on 24 hours ECG monitoring; and (4) unexplained syncope. We excluded abnormal BP response to exercise, as this was not systematically available on all patients, consistent with several prior large studies.²² Conventional risk factors were collapsed to a score between 0 and 4, depending on the number of risk factors.^{14–22} The HCM risk-SCD score was calculated through access of the online calculator (doc2do.com/hcm/webHCM.html).¹⁴ Eight patients had missing values used for this score and we were therefore unable to complete risk scoring.

Statistical analysis

Categorical variables were represented as percentages, and continuous variables summarised using means, SDs, and medians. The overall risk of aborted SCA was estimated using the Kaplan-Meier method. Potential risk factors for that end point were evaluated using Cox proportional hazards models. The number of covariates examined was restricted to maintain ≥10 events per degree of freedom; therefore echocardiographic covariates were not used with the ECG data for risk prediction. A cut-off value for the T wave amplitude in relation to the appropriate therapy end point was selected using the Contal and O'Quigley method.²³ All analysis was completed using SAS V.9.3.

RESULTS

Baseline characteristics

A total of 347 patients with HCM and an implanted ICD were included as the initial study cohort. Of these, (295) were excluded due to: ICD placed elsewhere/no

follow-up ICD data available after the index visit (n=212), bundle branch block/paced rhythm (n=48), persistent atrial fibrillation (n=12), known coronary artery disease (n=7) and <8 weeks between ECG and ICD implantation (n=16). Therefore, the final study population was 52 patients. Baseline characteristics are summarised in [table 1](#) and [table 2](#). Of the 52 patients, 63.5% were men, mean age 50.4±15.8 years and had an average of 1.28 (range 1–3) current SCA risk factors. The average LV wall thickness was 20±6.6 mm. Twelve patients had undergone septal reduction therapy preceding study inclusion, with three performed just prior to ICD implantation. The mean HCM risk-SCD, which identifies risk of SCD at 5 years, was 6.5% (ICD should be considered).

Clinical outcomes

During follow-up (8.5±4.1 years), 16 (30%) patients experienced an aborted SCA event, with nine patients receiving ICD shock and seven ATP therapy for a sustained ventricular arrhythmia. The annual rate of aborted SCA was 1.3% per year. For those that received a shock, 5 were for VF and 4 for VT. Two of these patients did not have EGMs available for review at time of shock. Five patients died during the follow-up period. Three occurred outside institutions and subsequently are unable to identify the underlying cause. One death occurred from coronary disease and another from a stroke.

Repolarisation ECG changes

ECG variables (lead V2 and V5) are summarised in [table 3](#). [Figure 2](#) highlights the average T-wave from all

Table 1 Baseline data

	Overall cohort	Aborted SCA event	No event
n	52	16	36
Age, years	50.1±15.8	51.9±14.1	49.3±16.7
Male	33 (63.5%)	10 (62.5%)	23 (63.8%)
Sudden death risk factors			
Mean (range)	1.29 (1-3)	1.5 (1-3)	1.2 (1-3)
1	37 (71.1%)	8 (50.0%)	28 (77.8%)
2+	15 (28.8%)	8 (50.0%)	8 (22.2%)
Family history of SCD	21 (41.1%)	8 (50.0%)	13 (36.1%)
Unexplained syncope	13 (25.0%)	4 (25.0%)	9 (25.0%)
LV wall thickness >30 mm	9 (17.3%)	3 (18.8%)	6 (16.6%)
Non-sustained VT on ambulatory holter	24 (52.1%)	9 (56.2%)	15 (41.6%)
Percentage of risk of SCD at 5 years—HCM risk-SCD*	6.5±3.6	7.4±4.3	6.3±3.7
NYHA functional class			
I	18 (34.6%)	5 (31.3%)	13 (36.1%)
II	20 (38.4%)	7 (43.8%)	13 (36.1%)
III-IV	14 (26.9%)	4 (25.0%)	10 (27.8%)
Surgical myomectomy	9 (17.3%)	3 (18.8%)	6 (16.6%)
Alcohol ablation	3 (5%)	0 (0%)	3 (8.3%)

Values are n (%), or mean±SD.

*Data on % risk of SCD at 5 years—HCM risk-SCD were available for 44 patients.

HCM, hypertrophic cardiomyopathy; NYHA, New York Heart Association; SCA, sudden cardiac arrest; SCD, sudden cardiac death; VT, ventricular tachycardia.

Table 2 Echocardiographic data

	Patients	Aborted SCA event	No event
N	52	16	36
LVEF, %	67±10%	66±11%	68±10%
LEVF<50%	3 (5.7%)	1 (6.3%)	2 (5.5%)
LV outflow tract gradient, mm Hg	20 (0–96)	13 (0–86)	31 (0–96)
Resting gradient >30 mm Hg	12 (23.1%)	2 (12.5%)	10 (27.8%)
LVEDD, mm	46.5±10	47.1±7.3	46.1±7.7
Maximal wall thickness, mm	20±6.6	20±6.3	20±6.6
Left atrial diameter, mm	55.0±10.5	55.2±11.3	55.7±13.7
Moderate or severe MR	7 (13.4%)	2 (12.5%)	5 (13.8%)
PASP, mmHg	35±18.9	43.9±21.0	31.7±14.3
Mitral E velocity, cm/s	0.79±0.28	0.76±0.32	0.84±0.29
Mitral A velocity, cm/s	0.61±0.25	0.65±0.24	0.61±0.26
Mitral E/A ratio, cm/s	1.43±0.65	1.27±0.74	1.52±0.60
Medial e', cm/s	0.05±0.02	0.05±0.02	0.06±0.02
Lateral e', cm/s	1.25±3.9	0.08±0.03	1.74±5.7
Medial E/e' ratio	15.1±8.7	15.0±6.5	15.2±8.8
Lateral E/e' ratio	12.4±11.4	8.8±3.8	14.1±14.3

Values are median (IQR), n (%), or mean±SD.

A, peak late diastolic velocity; E, peak early diastolic velocity; LVEF, left ventricular ejection fraction; Medial e' and lateral e', mitral annular tissue Doppler signals; LVEDD, Left ventricular end diastolic diameter; PASP, pulmonary artery systolic pressure; MR, mitral regurgitation; SCA, sudden cardiac arrest.

Table 3 Means of ECG repolarisation features

ECG features Mean±SD (median)	Overall cohort (n=52)	Aborted SCA event (n=16)	No event (n=36)
T-wave duration (msec)			
Lead V2	213±33 (211)	209±32 (204)	214±34 (211)
Lead V5	199±46 (194)	204±40 (203)	197±49 (193)
QT duration (msec)			
Lead V2	415±45 (416)	411±42 (411)	417±47 (417)
Lead V5	430±51 (433)	431±51 (417)	430±52 (437)
QTc (msec)			
Lead V2	420±33 (422)	427±29 (425)	418±35 (416)
Lead V5	436±41 (436)	445±34 (439)	432±43 (435)
Tpe Duration (msec)			
Lead V2	100±13 (100)	99±14 (96)	101±13 (100)
Lead V5	96±21 (91)	96±18 (93)	96±22 (91)
Tpe/QT ratio			
Lead V2	0.24±0.03 (0.24)	0.24±0.03 (0.24)	0.24±0.04 (0.24)
Lead V5	0.22±0.04 (0.22)	0.22±0.05 (0.22)	0.22±0.04 (0.22)
T-wave Amplitude (mV)			
Lead V2	0.49±0.29 (0.43)	0.34±0.18 (0.32)	0.55±0.31 (0.52)
Lead V5	0.26±0.24 (0.20)	0.20±0.14 (0.18)	0.29±0.27 (0.20)

Tpe, T peak T end interval; QTc, correct QT interval (Bazetts formula). SCA, sudden cardiac arrest.

the patients with HCM included and separated by aborted SCA event occurrence. T-wave amplitude was reduced in individuals who experienced an aborted SCA event during follow-up (figure 2). Specifically, in lead V2, T-wave amplitude was 0.34±0.18 mV in those that experienced aborted SCA vs 0.55±0.3 mV in those who did not. In lead V5 a similar pattern was observed with reduced T-wave amplitude in those that experienced an abort SCA event, 0.20±0.14 vs 0.29±0.27 mV. In lead V2 the average

QTc of those that experienced events was 427±29 vs 418±35 ms and in lead V5 446±34 vs 432±43 ms.

Prediction of SCA

On univariate analysis (table 4), T-wave amplitude in lead V2 was a predictor of aborted SCA (HR per 0.1 mV 0.79, 95% CI 0.56 to 0.96, p=0.02). History of NSVT (HR 3.36, 95% CI 1.00 to 11.35, p=0.05) was also a predictor in our cohort. On multivariate analysis, with a model

Figure 2 Average ECG tracings of the HCM cohort, separated by appropriate ICD therapy. HCM, hypertrophic cardiomyopathy; ICD, implantable cardioverter defibrillator.

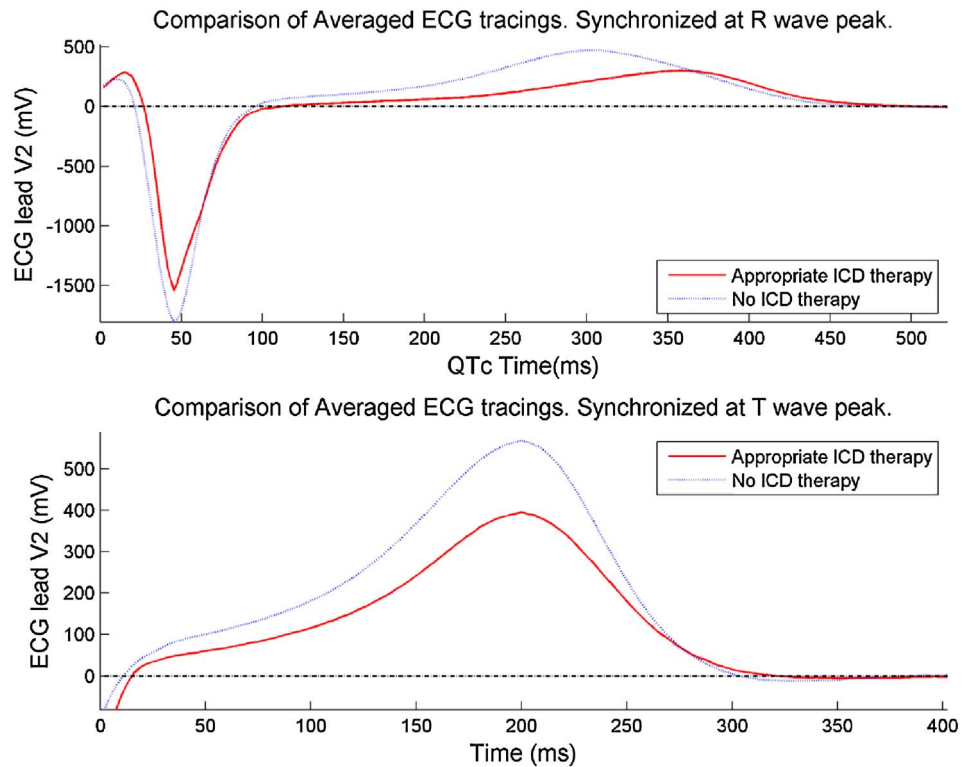


Table 4 Univariate analysis

	HR	95% CI	p Value
Family history of SCD	1.38	0.49 to 3.88	0.54
NSVT on ambulatory holter	3.36	1.00 to 11.35	0.05
Syncope	1.22	0.39 to 3.85	0.73
LV thickness >30 mm	0.91	0.26 to 3.22	0.89
T peak T end Duration*			
Lead V2	0.96	0.66 to 1.40	0.82
Lead V5	1.01	0.80 to 1.28	0.90
T wave duration*			
Lead V2	0.98	0.83 to 1.14	0.77
Lead V5	1.02	0.92 to 1.14	0.66
QTc duration*			
Lead V2	1.08	0.90 to 1.31	0.40
Lead V5	1.08	0.94 to 1.25	0.27
T wave amplitude†			
Lead V2	0.73	0.56 to 0.96	0.02
Lead V5	0.98	0.96 to 1.01	0.23
Number of sudden death risk factors	1.98	0.96 to 4.10	0.06

*HR is per 10 msec change.

†HR is per 0.1 mV change.

LV, left ventricular; NSVT, non-sustained ventricular tachycardia; SCD, sudden cardiac arrest.

Table 5 Multivariate analysis

	HR	95% CI	p Value
Sudden Death risk factors	1.70	0.85 to 3.41	0.13
T wave Amplitude Lead V2*	0.74	0.57 to 0.97	0.03

*HR is per 0.1 mV change.

including the traditional risk score, T-wave amplitude in lead V2 remained an independent predictor of subsequent SCA events (adjusted HR per 0.1 mV 0.74, 95% CI 0.57 to 0.97, $p=0.03$) (table 5). The T wave amplitude had no impact on the HCM risk-SCD ($p=0.26$), although data were missing on eight patients. Addition of the

T-wave amplitude to the traditional risk factor model improved risk stratification. The C-statistic from the traditional model in our cohort was 0.65, which increased to 0.75 with the addition of the T-wave amplitude. Cumulative event-free survival (figure 3) was worse in patients that had an amplitude <0.36 mV versus >0.36 mV with Kaplan-Meier analysis demonstrating that patients with a lower T-wave amplitude had a worse event-free survival curve (log rank $p=0.008$).

DISCUSSION

The major novel finding of this study is that in patients who meet traditional criterion for ICD implantation, T-wave amplitude provides incremental prognostic value in predicting subsequent SCA events. Specifically, in this high-risk population, reduced T-wave amplitude was associated with an increased likelihood of aborted SCA. In addition to current risk stratification tools, T-wave amplitude may add prognostic value in patients with HCM at risk of SCA.

Although the precise mechanism whereby reduced T-wave amplitude translates into increased risk of subsequent SCA events is unclear there is a growing body of

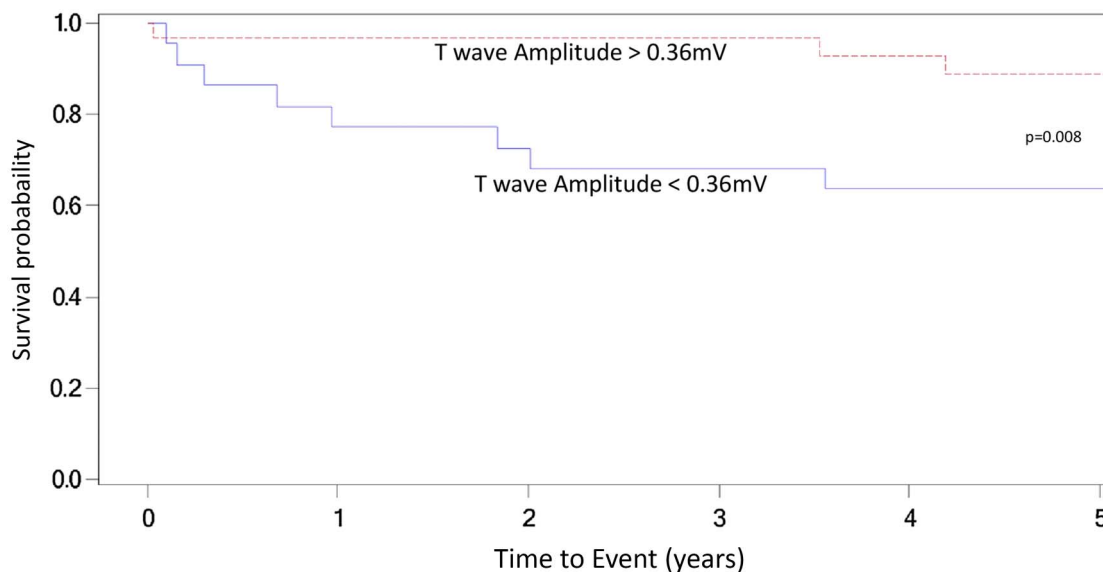


Figure 3 Cumulative event-free survival analysis by T-wave amplitude in lead V2. ICD, implantable cardioverter defibrillator.

evidence that suggests its potential for risk stratification of cardiac arrhythmias in other populations. Shi *et al*²⁴ assessed a number of conventional and novel-based measures from routine surface ECGs in ICD recipients (mainly ischaemic heart disease, 56%) and reported that reduced T-wave amplitude was associated with device therapy. This is similar to our findings although we are looking at a specific population where T wave changes may be more expected. Moreover, T-wave amplitude has also been shown to differentiate benign versus malignant inferolateral early repolarisation (ER), with reduced T-wave amplitude associated with a more malignant ER.²⁵ There are potential hypotheses behind the reduced T-wave amplitude that require further examination in future studies. In a study by Feldman *et al*²⁶ T-wave amplitude decreased as the chamber size decreased while another study reported a relationship between reduced T-wave amplitude and LVH.²⁷ Based on this study it was concluded that T amplitude assessment might serve as an early auxiliary marker of repolarisation heterogeneity in hypertension. This may be mechanistically plausible, as it has been shown that those with enlarged LV cavity/mass have a greater preponderance of ventricular arrhythmias—hence, T-wave amplitude could be an indirect marker of this.

Although we do see low mean T-wave amplitude in lead V5 it is unclear exactly why lead V2 was more important in risk prediction. We hypothesise that this is could potentially be related to the fact that this lead faces the septum while lead V5 is more lateral and therefore the septum plays potentially a role in changes to the T-wave amplitude. However, this requires further research and investigation. There have been mixed studies on the associate between QTc and arrhythmic events in HCM and more recently QTc was found not to be an independent predictor of SCD or its surrogates.²⁸ It is unclear why there is so much variation in the data

and we hypothesise that it could be related to the fact that myocardial fibrosis and myocyte disarray is not uniform throughout the myocardium and there is regional variation, subsequently the QTc which looks at global repolarisation is unable to detect subtle changes which may vary from lead to lead. This is why examination of T wave repolarisation is important as it may highlight these subtle differences.

While we have identified repolarisation abnormalities in high-risk patients with HCM, we have also shown that addition of T-wave amplitude to the traditional risk factors may improve risk prediction. The C-statistic increased from 0.65 to 0.75 with the addition of T-wave amplitude. The C-statistic for the HCM risk-SCD model has been reported to be 0.70¹⁴ with external validation yielding a C-statistic of 0.69.²⁹ Interestingly T-wave amplitude did not augment the HCM risk-SCD model and at baseline this model was not significant in our cohort. We were missing data on eight individuals so this may contributed and this may be reflective regional phenotypic variations in HCM cohorts.³⁰

Clinical implications

In this high-risk population of patients with HCM who meet traditional criterion for ICD implantation, T-wave amplitude provides incremental prognostic value in predicting SCA. Use of repolarisation parameters in addition to traditional risk markers could potentially refine optimal ICD selection and predict the likelihood of appropriate or necessary therapy among ICD recipients. While further validation of our findings is needed, this initial investigation may serve as an impetus for further assessment of surface ECG changes in order to enhance SCA risk stratification. Modern ECG machines are robust with high-resolution to facilitate analyses with minimal technician training, facilitating clinical translation.

Limitations

Our study has several limitations including retrospective analysis in a highly selected high-risk population since it cannot be applied in patients with a ventricular paced rhythm, bundle branch blocks or atrial arrhythmias (an estimated 20%) since these patients by necessity were excluded from our analyses. Given the limited number of events (which in turn limits the variables that can be assessed via multivariate modelling), traditional risk factors were collapsed into a continuous variable, which is suboptimal as it treats each variable as equal. However, this methodology has been previously used in other studies of risk stratification, in particular the approach used in the HCM risk-SCD model.^{14 22 31} It is unclear the impact the selection of our population may have on the calculated repolarisation changes and further studies need to examine the correlation between repolarisation changes and the severity of disease finally, we did not specifically control for multiple testing within this study therefore further studies should evaluate these repolarisation changes.

CONCLUSION

In selected patients with HCM, repolarisation abnormalities, namely T-wave amplitude, may provide incremental prognostic information, in addition to traditional risk factors. Further studies are needed to understand the mechanism whereby these changes may underlie risk of ventricular arrhythmias as well as the study of these changes in the general HCM population.

Author affiliations

¹Department of Internal Medicine, Mayo Clinic, Rochester, Minnesota, USA

²Department of Cardiovascular Diseases, Mayo Clinic, Rochester, Minnesota, USA

³Cardiovascular Diseases, Mayo Clinic, Rochester, MN, USA

⁴Mayo Clinic Graduate School of Medicine, Rochester, Minnesota, USA

⁵Specialty Registrar, Cardiology and Internal Medicine, London Deanery, University College London Partners, UK

⁶Czech Institute of Informatics, Robotics, and Cybernetics, Czech Technical University in Prague, Prague, Czech Republic

⁷Department of Pediatric Cardiology, Mayo Clinic, Rochester, Minnesota, USA

Funding CVD is supported by an NIH T32 training grant HL 007111. VK is supported by funding from Czech Science Foundation GACR number P103/11/P106. ACC is supported by the Translational Science Award Grant Number UL1TR000135, supporting the Mayo Clinic Center for Clinical and Translational Science (CCaTS), from the National Center for Advancing Translational Sciences (NCATS), a component of NIH and the American Heart Association (Award Number 17POST33400211).

Competing interests None declared.

Ethics approval Mayo Clinic IRB Committee.

Provenance and peer review Not commissioned; internally peer reviewed.

Data sharing statement Any requests for data sharing should be made to the corresponding author.

Open Access This is an Open Access article distributed in accordance with the Creative Commons Attribution Non Commercial (CC BY-NC 4.0) license, which permits others to distribute, remix, adapt, build upon this work non-commercially, and license their derivative works on different terms, provided

the original work is properly cited and the use is non-commercial. See: <http://creativecommons.org/licenses/by-nc/4.0/>

REFERENCES

1. Maron BJ, McKenna WJ, Danielson GK, *et al.* American College of Cardiology/European Society of Cardiology clinical expert consensus document on hypertrophic cardiomyopathy. A report of the American College of Cardiology Foundation Task Force on Clinical Expert Consensus Documents and the European Society of Cardiology Committee for Practice Guidelines. *J Am Coll Cardiol* 2003;42:1687–713.
2. Gersh BJ, Maron BJ, Bonow RO American College of Cardiology Foundation/American Heart Association Task Force on P, American Association for Thoracic S, American Society of E. 2011 ACCF/AHA guideline for the diagnosis and treatment of hypertrophic cardiomyopathy: a report of the American College of Cardiology Foundation/American Heart Association Task Force on Practice Guidelines. *J Thorac Cardiovasc Surg* 2011;142:e153–203.
3. Maron BJ, Maron MS. Hypertrophic cardiomyopathy. *Lancet* 2013;381:242–55.
4. Maron BJ, Maron MS, Lesser JR, *et al.* Sudden cardiac arrest in hypertrophic cardiomyopathy in the absence of conventional criteria for high risk status. *Am J Cardiol* 2008;101:544–7.
5. Maron BJ, Shen WK, Link MS, *et al.* Efficacy of implantable cardioverter-defibrillators for the prevention of sudden death in patients with hypertrophic cardiomyopathy. *N Engl J Med* 2000;342:365–73.
6. Wolf CM, Moskowitz IP, Arno S, *et al.* Somatic events modify hypertrophic cardiomyopathy pathology and link hypertrophy to arrhythmia. *Proc Natl Acad Sci USA* 2005;102:18123–8.
7. Passini E, Mincholé A, Coppini R, *et al.* Mechanisms of pro-arrhythmic abnormalities in ventricular repolarisation and anti-arrhythmic therapies in human hypertrophic cardiomyopathy. *J Mol Cell Cardiol* 2016;96:72–81.
8. Quinzeiro RA, Biagetti MO, Fernandez A, *et al.* Can QT/RR relationship differentiate between low- and high-risk patients with hypertrophic cardiomyopathy? *Ann Noninvasive Electrocardiol* 2015;20:386–93.
9. Benn M, Hansen PS, Pedersen AK. QT dispersion in patients with arrhythmogenic right ventricular dysplasia. *Eur Heart J* 1999;20:764–70.
10. Letsas KP, Weber R, Astheimer K, *et al.* Tpeak-Tend interval and Tpeak-Tend/QT ratio as markers of ventricular tachycardia inducibility in subjects with Brugada ECG phenotype. *Europace* 2010;12:271–4.
11. Yamaguchi M, Shimizu M, Ino H, *et al.* T wave peak-to-end interval and QT dispersion in acquired long QT syndrome: a new index for arrhythmogenicity. *Clin Sci* 2003;105:671–6.
12. Olivetto I, Gistri R, Petrone P, *et al.* Maximum left ventricular thickness and risk of sudden death in patients with hypertrophic cardiomyopathy. *J Am Coll Cardiol* 2003;41:315–21.
13. Maron MS, Olivetto I, Betocchi S, *et al.* Effect of left ventricular outflow tract obstruction on clinical outcome in hypertrophic cardiomyopathy. *N Engl J Med* 2003;348:295–303.
14. O'Mahony C, Jichi F, Pavlou M, *et al.* A novel clinical risk prediction model for sudden cardiac death in hypertrophic cardiomyopathy (HCM risk-SCD). *Eur Heart J* 2014;35:2010–20.
15. Panikkath R, Reinier K, Uy-Evanado A, *et al.* Prolonged Tpeak-to-tend interval on the resting ECG is associated with increased risk of sudden cardiac death. *Circ Arrhythm Electrophysiol* 2011;4:441–7.
16. Antzelevitch C, Sicouri S, Di Diego JM, *et al.* Does Tpeak-Tend provide an index of transmural dispersion of repolarization? *Heart Rhythm* 2007;4:1114–16; author reply 16–9.
17. Postema PG, De Jong JS, Van der Bilt IA, *et al.* Accurate electrocardiographic assessment of the QT interval: teach the tangent. *Heart Rhythm* 2008;5:1015–18.
18. Lepeschkin E, Surawicz B. The measurement of the QT interval of the electrocardiogram. *Circulation* 1952;6:378–88.
19. Gupta P, Patel C, Patel H, *et al.* T(p-e)/QT ratio as an index of arrhythmogenesis. *J Electrocardiol* 2008;41:567–74.
20. Elliott PM, Poloniecki J, Dickie S, *et al.* Sudden death in hypertrophic cardiomyopathy: identification of high risk patients. *J Am Coll Cardiol* 2000;36:2212–18.
21. Maron BJ. Hypertrophic cardiomyopathy: a systematic review. *JAMA* 2002;287:1308–20.
22. Chan RH, Maron BJ, Olivetto I, *et al.* Prognostic value of quantitative contrast-enhanced cardiovascular magnetic resonance for the

- evaluation of sudden death risk in patients with hypertrophic cardiomyopathy. *Circulation* 2014;130:484–95.
23. Contal C, O'Quigley J. An application of changepoint methods in studying the effect of age on survival in breast cancer. *Comput Stat Data Anal* 1999;30:253–70.
 24. Shi B, Harding SA, Jimenez A, *et al.* Standard 12-lead electrocardiography measures predictive of increased appropriate therapy in implantable cardioverter defibrillator recipients. *Europace* 2013;15:892–8.
 25. Roten L, Derval N, Maury P, *et al.* Benign vs malignant inferolateral early repolarization: focus on the T wave. *Heart Rhythm* 2016;13:894–902.
 26. Feldman T, Childers RW, Borow KM, *et al.* Change in ventricular cavity size: differential effects on QRS and T wave amplitude. *Circulation* 1985;72:495–501.
 27. Dilaveris P, Gialafos E, Poloniecki J, *et al.* Changes of the T-wave amplitude and angle: an early marker of altered ventricular repolarization in hypertension. *Clin Cardiol* 2000;23:600–6.
 28. Biagini E, Pazzi C, Olivetto I, *et al.* Usefulness of electrocardiographic patterns at presentation to predict long-term risk of cardiac death in patients with hypertrophic cardiomyopathy. *Am J Cardiol* 2016;118:432–9.
 29. Vriesendorp PA, Schinkel AF, Liebrechts M, *et al.* Validation of the 2014 European Society of Cardiology Guidelines Risk Prediction Model for the primary prevention of sudden cardiac death in hypertrophic cardiomyopathy. *Circ Arrhythm Electrophysiol* 2015;8:829–35.
 30. Maron BJ, Casey SA, Chan RH, *et al.* Independent assessment of the European Society of Cardiology sudden death risk model for hypertrophic cardiomyopathy. *Am J Cardiol* 2015;116:757–64.
 31. Debonnaire P, Katsanos S, Joyce E, *et al.* QRS Fragmentation and QTc duration relate to malignant ventricular tachyarrhythmias and sudden cardiac death in patients with hypertrophic cardiomyopathy. *J Cardiovasc Electrophysiol* 2015;26:547–55.