



# openheart Familial risk of vasospastic angina: a nationwide family study in Sweden

Fabrizio Ricci <sup>1</sup>, Behzad Banihashemi,<sup>2</sup> Mirnabi Pirouzifard,<sup>3</sup> Jan Sundquist,<sup>3</sup> Kristina Sundquist,<sup>3</sup> Richard Sutton,<sup>2,4</sup> Artur Fedorowski <sup>2,5</sup>, Bengt Zoller<sup>3</sup>

► Additional supplemental material is published online only. To view, please visit the journal online (<http://dx.doi.org/10.1136/openhrt-2023-002504>).

**To cite:** Ricci F, Banihashemi B, Pirouzifard M, *et al.* Familial risk of vasospastic angina: a nationwide family study in Sweden. *Open Heart* 2023;**10**:e002504. doi:10.1136/openhrt-2023-002504

AF and BZ are joint senior authors.

Received 25 September 2023  
Accepted 10 November 2023



© Author(s) (or their employer(s)) 2023. Re-use permitted under CC BY. Published by BMJ.

<sup>1</sup>Gabriele d'Annunzio University of Chieti and Pescara, Chieti, Italy

<sup>2</sup>Department of Clinical Sciences, Lund University, Malmö, Sweden

<sup>3</sup>Center for Primary Health Care Research, Lund University, Malmö, Sweden

<sup>4</sup>Department of Cardiology, Imperial College School of Medicine, London, UK

<sup>5</sup>Department of Cardiology, Karolinska Institute and Karolinska University Hospital, Solna, Stockholm, Sweden

## Correspondence to

Dr Artur Fedorowski; [artur.fedorowski@med.lu.se](mailto:artur.fedorowski@med.lu.se)

## ABSTRACT

**Objectives** Vasospastic angina (VSA) is a complex coronary vasomotor disorder associated with an increased risk of myocardial infarction and sudden death. Despite considerable advances in understanding VSA pathophysiology, the interplay between genetic and environmental factors remains elusive. Accordingly, we aimed to determine the familial VSA risk among first-degree relatives of affected individuals.

**Methods** A population-based multigenerational cohort study was conducted, including full-sibling pairs born to Swedish parents between 1932 and 2018. Register-based diagnoses were ascertained through linkage to the Swedish Multigeneration Register and National Patient Register. Incidence rate ratios (IRRs) and adjusted HRs were calculated for relatives of individuals with VSA compared with relatives of individuals without VSA.

**Results** The total study population included 5 764 770 individuals. Overall, 3461 (0.06%) individuals (median age at disease onset 59 years, IQR: 63–76) were diagnosed with VSA. Of these, 2236 (64.61%) were women. The incidence rate of VSA for individuals with an affected sibling was 0.31 (95% CI: 0.24 to 0.42) per 1000 person-years compared with 0.04 (95% CI: 0.04 to 0.04) per 1000 person-years for those without an affected sibling, yielding an IRR of 7.58 (95% CI: 5.71 to 10.07). The risk of VSA for siblings with an affected sibling was significantly increased in the fully adjusted model (HR: 2.56; 95% CI: 1.73 to 3.79). No increased risk of VSA was observed in spouses of affected individuals (HR: 0.63; 95% CI: 0.19 to 2.09).

**Conclusions** In this nationwide family study, we identified high familial risk for VSA independent of shared environmental risk factors. Our findings indicate that VSA tends to cluster in families, emphasising the need to explore genetic and non-genetic factors that may contribute.

## INTRODUCTION

Vasospastic angina (VSA), also known as Prinzmetal variant angina, is the clinical manifestation of myocardial ischaemia caused by dynamic coronary artery obstruction and sustained by a complex coronary vasomotor disorder resulting from endothelial dysfunction and non-specific hyper-reactivity of coronary vascular smooth muscle to vasoconstrictor stimuli.<sup>1</sup> VSA has been associated

## WHAT IS ALREADY KNOWN ON THIS TOPIC

⇒ Vasospastic angina (VSA) is a condition associated with dynamic coronary artery obstruction and myocardial ischaemia. VSA is linked to both environmental and genetic factors, with smoking being the most significant environmental trigger, but uncertainties remain regarding familial risk.

## WHAT THIS STUDY ADDS

⇒ In this nationwide multigenerational cohort study, we observed a significant increase in VSA risk among siblings of affected individuals, independent of traditional cardiovascular risk factors, comorbidities and shared environmental factors, suggesting a strong hereditary component with genetic resemblance.

## HOW THIS STUDY MIGHT AFFECT RESEARCH, PRACTICE OR POLICY

⇒ The findings could shift the focus on genetic research for VSA, inform personalised treatment and encourage clinicians to include family history in risk assessments. Continued research is needed in multiethnic cohorts to uncover specific genetic factors and pathways involved in VSA pathophysiology.

with high rate of hospitalisations<sup>2</sup> and major adverse cardiovascular events including myocardial infarction, syncope and sudden death.<sup>3–6</sup> In Prinzmetal's original description of variant angina, spontaneous episodes of rest angina were associated with transient ST elevation that promptly resolved with short-acting nitrates.<sup>7</sup> Subsequently, these patients were shown to have inducible coronary artery spasm and the term VSA was introduced. The Coronary Vasomotor Disorders International Study Group (COVADIS) criteria for diagnosing VSA requires the presence of classical clinical manifestations, the documentation of myocardial ischaemia during spontaneous episodes and/or the demonstration of coronary artery spasm, to classify VSA into either 'definitive' or 'suspected'.<sup>8</sup> The 2023 Japanese guidelines<sup>9</sup> refined the diagnostic algorithm with a focus on four items including symptom onset at rest (especially between night and early morning), significant diurnal

variation in exercise tolerance, role of hyperventilation and effectiveness of calcium channel blockers.

Although recent advances in the understanding of VSA pathophysiology and improvements in diagnosis and treatment have been made, uncertainties still exist regarding the complex interplay of genetic and environmental factors contributing to the development of the disease. Indeed, although VSA was initially considered an acquired abnormality,<sup>10</sup> previously referred to as ‘tobacco angina pectoris’ or ‘angine spasmo-tabagique’,<sup>11</sup> substantial progress has been made to unravel underlying genetic factors. The available evidence highlights the roles of oxidative stress, inflammation, autonomic dysfunction and genetic susceptibility to VSA, as well as the presence of sex-specific differences and racial heterogeneity.<sup>12</sup> Genetic mutations involving NO synthase, adrenergic receptors, serotonergic receptors, angiotensin-converting enzyme and paraoxonase-I have been implicated in the pathogenesis of VSA.<sup>13</sup> The C242T variant of the CYBA gene in men and the C634G variant of the interleukin-6 (IL-6) gene in women have also been linked to VSA. Additional variants of interest are the Ala370Ser variant of the ARHGAP9 gene and the ALDH2\*2 genotype in East Asians. Despite the identified genetic associations,<sup>11 14–17</sup> the environmental factor smoking remains the most significant adverse trigger for VSA, impacting several disease pathways related to these genetic variants and leading to substantial gene–environment interactions.<sup>18</sup> Although smoking and nicotine are generally perceived as harmful, especially for those with strong genetic predispositions, they may sometimes yield paradoxical effects in certain individuals.<sup>19</sup> This complexity suggests the existence of unknown patient-specific factors that could influence individual vasoactive response to these triggers.

Family risk studies can help to uncover familial patterns of disease and to differentiate the genetic and environmental components involved by comparing disease prevalence in siblings and spouses with and without affected family members.<sup>20 21</sup> While family history is not generally believed a strong risk factor for VSA and genetic factors are considered as unlikely to be a major element in its pathogenesis,<sup>22</sup> familial risk for VSA in a large population-based family cohort study has not yet been determined. Accordingly, we aimed to investigate the familial risk of VSA among siblings of individuals with or without a documented history of VSA in a nationwide family cohort based on data from Sweden. We hypothesised that there would be a higher risk of VSA among individuals with a documented family history of disease irrespective of shared environmental risk factors.

## METHODS

### Study population

Patients were not involved in the design, or conduct, or reporting, or dissemination plans of our research. All data were provided by Statistics Sweden and the National

Board of Health and Welfare for research purposes. Data were coded according to European Union law. The Regional Ethical Review Board in Lund, Sweden, approved this cohort study and waived informed consent as a requirement. This study followed the ‘Strengthening the Reporting of Observational Studies in Epidemiology’ reporting guideline. We used the following Swedish national registers for data extraction<sup>23–27</sup>: the Swedish Multigeneration Register, which contains data on familial relationships and index persons born in 1932 and later and registered in Sweden in 1961 and later; the National Patient Register (NPR), which includes all hospital discharge diagnoses from 1964 to 2018 with nationwide coverage from 1987, and hospital outpatient diagnoses from 2001 to 2018; the population register and the total population register, which contain data on death date, if applicable, name change, marital status, family relationships, education and migration (the register has high coverage for nearly 100% of birth and death dates, 95% of immigration events and 91% of emigration events); and the Swedish Cause of Death Register, which provides date and cause of death from 1961 to 2018. The databases were linked together according to previously applied methods.<sup>28 29</sup>

In the Swedish Multigeneration National Swedish Register,<sup>21</sup> we identified all pairs of full-sibling born in Sweden by Swedish-born parents. Thus, both biological parents were obligatorily known. Relative pairs with members who died or emigrated before 1997 or emigrated before the age of 17 years were excluded. Twins were included in the full-sibling group and no information regarding zygosity was available. The International Statistical Classification of Diseases and Related Health Problems, Tenth Revision (ICD-10 code I20.1) was used to identify VSA. We identified individuals with a diagnosis of VSA (ICD-10 code I20.1) registered between 1997 and 2018 from the NPR. In the database, all relative pairs were double-entered (ie, all full-sibling pairs as previously described).<sup>28 29</sup> We allowed the same person to be included in more than one family relationship.

### Statistical analysis

Incidence rates were defined as the number of events divided by the person-time at risk. The familial incidence ratio between two incidence densities (rate in the exposed population divided by rate in those unexposed) gave the incidence rate ratio (IRR). VSA-free survival curves were constructed according to the Kaplan-Meier method to compare individuals with and without a documented family history of VSA. For the comparison of two curves, the log-rank test, resulting in a test statistic with a  $\chi^2$  distribution and 1 df, was used. The ambiguity in unselected samples as to which sibling’s trait should be used as the dependent, and which as the independent variable is frequently resolved by using double entry. Each sibling entered twice in the data, and each member of a sibling pair provides once the dependent and once the explanatory variable. While the consistency of the

regression estimates for heritability and environmental influences is not affected by double entry, the SEs of the coefficients are biased and need to be adjusted.<sup>30</sup> In this study, adjusted familial associations between full-siblings were investigated using Cox proportional hazards model and were estimated using robust SEs. Results are reported as familial HRs with 95% CIs. Models were adjusted for year of birth, sex, level of education, myocardial infarction (I21–I23), hypertension (I10–I15), hyperlipidaemia (E78), diabetes (E10–E14), chronic obstructive pulmonary disease (J40–J44), cancer (C00–C97), obesity (E66), Raynaud's phenomenon (I73.0), migraine (G43), cluster headache (G44.0), myocarditis (I40, I41), oesophageal disease (K20–K22), alcohol abuse (F10, Z71.4, Z72.1), cocaine abuse (F14) and tobacco use (F17, Z71.6, Z72.0). Familial HRs for VSA were calculated for relatives of individuals who had a diagnosis of VSA compared with relatives of individuals unaffected by VSA as the reference group. Subgroup analysis was performed by year of birth, recurrent hospitalisation for VSA ( $\geq 2$  hospital admissions) and age difference between full-siblings. Two different sensitivity analyses were performed: (1) excluding all individuals who did not undergo coronary angiography (AF037) at the same hospital contact and (2) excluding those who had a coronary intervention (ie, angiography of coronary bypass grafts including internal mammary artery, coronary artery bypass grafting and percutaneous coronary intervention according to online supplemental table S1 during the index hospital contact

for VSA. Spousal risk was also determined. Statistical significance was set at  $p < 0.05$  and all tests were two-tailed. Data were analysed from December 2021 to February 2022 using SAS V.9.4 (SAS Institute).

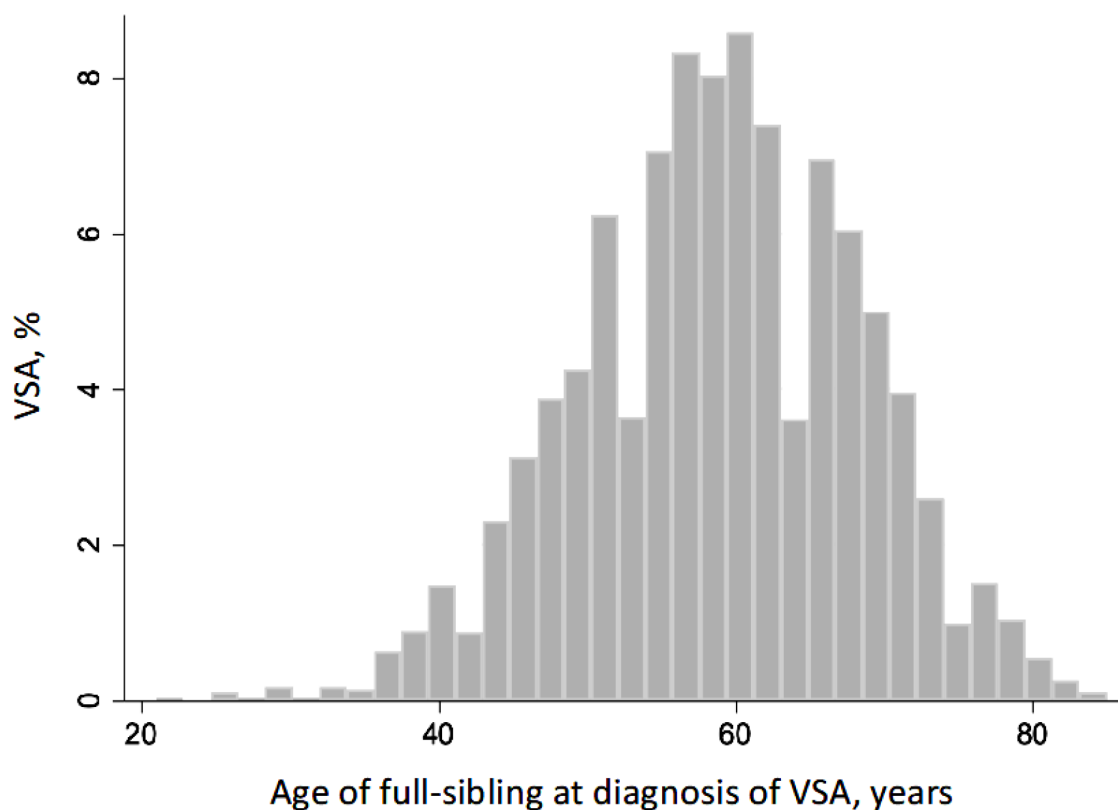
## RESULTS

The total study population included 5 764 770 full-siblings. Overall, 3461 (0.06%) unique individuals were diagnosed with VSA. Median age at first-time diagnosis was of disease 59 years (IQR 53–66) (figure 1). Individuals with a documented history of VSA were predominantly women and smokers, exhibiting a higher prevalence of comorbidities such as hypertension, dyslipidaemia, chronic obstructive pulmonary disease, obesity, diabetes, prior myocardial infarction, migraine, cancer and oesophageal disorders (table 1).

### Familial risk of VSA

Person-years, incidence rates and IRR according to documented history of VSA are presented in table 2. The incidence rate of VSA for those with an affected sibling was 0.31 (95% CI: 0.24 to 0.42) per 1000 person-years compared with 0.04 (95% CI: 0.04 to 0.04) per 1000 person-years for those without an affected sibling, yielding an IRR of 7.58 (95% CI: 5.71 to 10.07) (online supplemental file 2).

Table 2 shows, in the crude Model 1, that the risk of VSA for siblings with an affected sibling was increased (HR:



**Figure 1** Age distribution at first-time diagnosis of vasospastic angina (VSA). Of 3461 individuals with VSA born between 1932 and 2018, the median age at onset was 59 (range, 21–85) years; the curve had a mean (SD) value of 59 (9.5) years.

**Table 1** Details of study population and stratified by documented history of vasospastic angina (VSA)

	Participants, no. (%)		
	All	Without VSA	With VSA
Overall	5 764 770	5 761 309 (99.94)	3461 (0.06)
Sex			
Male	2 954 982 (51.26)	2 953 757 (51.27)	1225 (35.39)
Female	2 809 788 (48.74)	2 807 552 (48.73)	2236 (64.61)
Year of birth, median (IQR) [range]	1974 (1955–1994) [1932–2018]	1974 (1955–1994) [1932–2018]	1946 (1941–1954) [1932–1990]
Age at end of follow-up, median (IQR) [range]	43 (24–62) [0–86]	43 (24–62) [0–86]	59 (53–66) [21–85]
Age at Prinzmetal onset, median (IQR) [range]	NA	NA	59 (53–66) [21–85]
Education			
Unknown or 1–9 years	692 193 (12.01)	691 197 (12.00)	996 (28.78)
10–11 years	2 422 567 (42.02)	2 420 999 (42.02)	1568 (45.30)
>11 years	2 650 010 (45.97)	2 649 113 (45.98)	879 (25.92)
Source			
Hospital discharge register	NA	NA	2218 (64.09)
Outpatient register	NA	NA	1243 (35.91)
Spouse			
Husband	NA	NA	1199 (39.38)
Wife	NA	NA	1846 (60.62)
Comorbidity			
Hypertension	640 698 (11.11)	638 405 (11.08)	2293 (66.25)
Hyperlipidaemia	222 912 (3.87)	221 306 (3.84)	1606 (46.40)
COPD	108 472 (1.88)	108 092 (1.88)	380 (10.98)
Obesity	163 979 (2.84)	163 688 (2.84)	291 (8.41)
Diabetes mellitus	254 726 (4.42)	253 996 (4.41)	730 (21.09)
Myocardial infarction	117 747 (2.04)	116 661 (2.02)	1086 (31.38)
Raynaud's phenomenon	4216 (0.07)	4197 (0.07)	19 (0.55)
Migraine	111 908 (1.94)	111 731 (1.94)	177 (5.11)
Cluster headache (Horton syndrome)	4765 (0.08)	4759 (0.08)	6 (0.17)
Myocarditis	8420 (0.15)	8390 (0.15)	30 (0.87)
Malignancy	520 725 (9.03)	519 826 (9.02)	899 (25.98)
Oesophageal disease	185 985 (3.23)	185 427 (3.22)	558 (16.12)
Alcohol abuse	178 405 (3.09)	178 222 (3.09)	183 (5.29)
Cocaine abuse	2294 (0.04)	2292 (0.04)	2 (0.06)
Tobacco use	93 406 (1.62)	93 087 (1.62)	319 (9.22)

COPD, chronic obstructive pulmonary disease.

7.64; 95% CI: 5.17 to 11.31). In the multivariable-adjusted Model 2, which also included birth year, sex and educational attainment, the familial HR for VSA was 3.39 (95% CI: 2.28 to 5.03). After additional adjustment for comorbidities in Model 3, the familial HR remained significantly increased (HR: 2.56; 95% CI: 1.73 to 3.79) (online supplemental file 2). Kaplan-Meier curves according to the family history of VSA are presented in [figure 2](#).

Family risk of VSA was consistent in subgroup analyses stratified by year of birth (online supplemental table S2) and recurrent VSA (online supplemental table S3). Individuals with recurrent VSA had higher familial risk (HR: 5.45; 95% CI: 2.80 to 10.62). Familial sibling risk was higher among younger (HR: 4.63; 95% CI: 2.12 to 10.14) than older (HR: 2.36; 95% CI: 1.54 to 3.63) individuals. In a sensitivity analysis limited to patients who



**Table 2** Risk of vasospastic angina (VSA) in siblings with and without an affected sibling

Variable	Person-year no.	Cases, no./persons at risk, no.	Incidence rate, cases/1000 person-years	Incidence rate ratio (95% CI)	HR (95% CI)		
					Model 1	Model 2	Model 3
Sibling not affected	187 909 313	7801/10 136 643	0.04 (0.04–0.04)	1 (Reference)	1 (Reference)	1 (Reference)	1 (Reference)
Sibling affected	152 474	48/7849	0.31 (0.24–0.42)	7.58 (5.71 to 10.07)	7.64 (5.17 to 11.31)	3.39 (2.28 to 5.03)	2.56 (1.73 to 3.79)

Model 1 unadjusted. Model 2 adjusted for birth year, sex and educational attainment. Model 3 additionally adjusted for hypertension, hyperlipidaemia, COPD, obesity, diabetes mellitus, myocardial infarction, Raynaud's phenomenon, migraine, cluster headache Horton syndrome, myocarditis, malignancy, oesophageal disease, alcohol abuse, cocaine abuse, tobacco use. All calculations are based on double entry and 95% CI are calculated using robust SEs. COPD, chronic obstructive pulmonary disease.

underwent coronary angiography during their index hospital contact, the fully adjusted model produced a familial HR of 4.31 (95% CI: 0.62 to 30.15) (online supplemental table S4). When excluding patients undergoing myocardial revascularisation during the index hospital contact, the fully adjusted model yielded a familial HR of 2.52 (95% CI: 1.65 to 3.84) (online supplemental table S5).

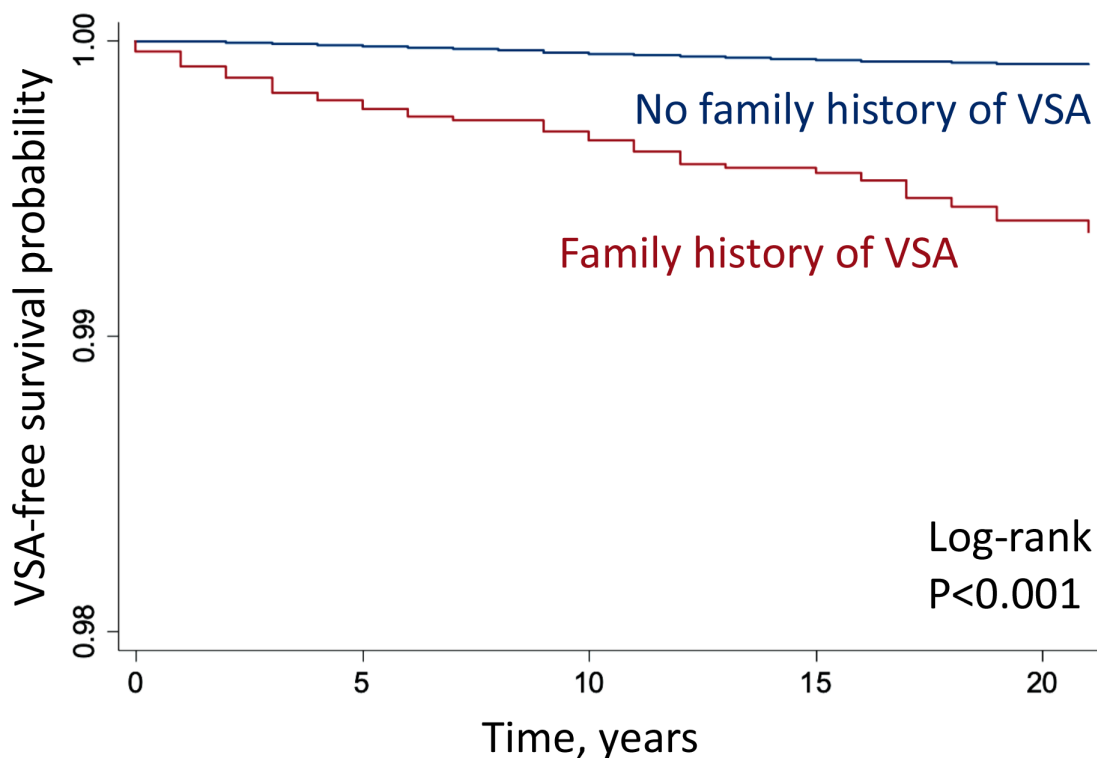
We conducted two additional types of analyses to assess the extent of environmental sharing in the observed risks of VSA. First, we computed HRs for siblings based on age difference. The age difference had minimal impact on the results. Siblings with an age difference of less than 6 years exhibited an HR of 2.59 (95% CI: 1.59 to 4.21), while those with a difference of 6 years or more had an HR of 2.48 (95% CI: 1.26 to 4.90) (online

supplemental table S6). Second, we estimated risks for spouses hospitalised for VSA. No increased risk of VSA was observed in spouses of affected individuals (HR: 0.63; 95% CI: 0.19 to 2.09) (online supplemental table S7).

In multivariate Cox regression analysis, family history of VSA, female sex, diabetes, obesity, hyperlipidaemia, history of myocardial infarction, tobacco use, oesophageal disease, history of myocarditis and alcohol abuse remained independent predictors of VSA in the fully adjusted model (online supplemental table S8).

## DISCUSSION

In this nationwide family study, we identified signals suggesting a strong hereditary component in VSA with



**Figure 2** Vasospastic angina (VSA) survival curves with and without sibling history of VSA. Kaplan-Meier VSA-free survival estimates by family (ie, sibling) history.

genetic resemblance, which provides valuable insights into the potential role of genetic factors in VSA and coronary vasomotor disorders development. The familial association was independent of traditional cardiovascular risk factors and clinically relevant comorbidities. The observed familial clustering of VSA highlights the importance of identifying factors that contribute to this aggregation, which include both genetic and non-genetic elements. Delving into these factors may provide valuable insights into VSA pathophysiology.

The higher familial risk among younger than older individuals argues for an important genetic contribution. Complex traits typically exhibit stronger inheritance at young ages.<sup>31 32</sup> The observation of similar HRs among siblings with both small and large age differences further strengthens the argument for a genetic contribution. The lack of association among spouses also indicates that genetics might be more important than shared familial household environment. Numerous complex disorders typically exhibit ORs of approximately 2.<sup>32</sup> Very strong environmental risk factors with complete correlation in exposure among siblings are necessary to explain the present findings.<sup>21</sup>

The increased prevalence of VSA among female patients observed in our study corroborates recent evidence from one of the largest and contemporary European cohort focusing on sex differences in coronary vasomotor dysfunction.<sup>33</sup> This cohort, which examined patients with stable angina and unobstructed coronary arteries undergoing acetylcholine testing, revealed that women are more prone to conditions such as epicardial vasospasm and coronary microvascular dysfunction caused by microvascular spasms, and also exhibit greater sensitivity to acetylcholine compared with men. In addition, their finding that positive family history is more frequently identified in women than in men suggests potentially different genetic backgrounds.

The current understanding of VSA pathophysiology involves various factors, including endothelial dysfunction,<sup>34</sup> smooth muscle hyper-reactivity,<sup>22 35</sup> autonomic dysfunction<sup>36 37</sup> and inflammation.<sup>1 14 38</sup> Although the precise mechanisms leading to VSA are still not fully understood, our findings indicate that inheritable factors could play a significant role in its development. Additionally, our study highlights the importance of considering family history in the clinical evaluation of patients with suspected VSA. Clinicians should be aware of the increased risk of VSA in first-degree relatives of affected individuals, as this information may facilitate early identification and timely intervention in at-risk individuals. It is worth noting that, despite the strong heritable component observed in this study, non-genetic factors likely play a role in the development of VSA as well. Environmental factors, lifestyle and other modifiable risk factors should not be overlooked in the management of VSA.<sup>39–41</sup> A comprehensive approach addressing both genetic and non-genetic factors is essential for the effective prevention and treatment of patients with coronary vasomotor disorders.

Family risk studies are instrumental in unveiling familial disease patterns and understanding genetic and environmental contributions to complex diseases like VSA. These studies help identify shared genetic factors among relatives, potentially serving as valuable biomarkers for early detection and disease prevention. Furthermore, family risk studies deliver a comprehensive view of the disease, considering the complex interplay between genetic, environmental and lifestyle factors. Genome-wide association studies (GWAS) offer a complementary approach to our family risk study on VSA. GWAS can help identify common genetic variants associated with VSA, providing further insights into the genetic architecture of the disease and potential therapeutic targets. Combining the results of family risk studies with GWAS findings may lead to a more complete understanding of genetic susceptibility and environmental factors that contribute to VSA development. In a small study recruiting 411 Japanese women with stable chest pain who underwent intra-coronary acetylcholine provocation test, a novel genetic marker for coronary spasm, SNP rs10498345, was identified using a genome-wide single nucleotide polymorphism analysis. The SNP rs10498345 may hold clinical significance as it was found more strongly associated with VSA than cigarette smoking.<sup>42</sup>

Further research is needed to validate and expand on our findings and identify specific genetic factors and pathways involved in the pathophysiology of VSA that may help reveal novel therapeutic targets, guide the development of personalised treatment approaches and targeted screening programmes for high-risk populations. This research could include larger, multicentre and multiethnic studies to identify common and population-specific genetic factors, as well as investigations into gene–environment interactions and the potential influence of epigenetic factors on VSA risk.

### Strengths and limitations

The large size and nationwide coverage of the study sample is a key strength. Other important strengths include the use of validated national hospital discharge data,<sup>23–27</sup> which allows for the elimination of recall bias, and the capability of controlling for major confounders, such as age, sex, cardiovascular risk factors, cancer, smoking, myocarditis, oesophageal disorders,<sup>43</sup> Raynaud's phenomenon and migraine headaches.<sup>44</sup> Further, Swedish registers such as the Multigeneration Register and the Swedish Hospital Discharge Register have high coverage and high data validity.<sup>24 45 46</sup>

A limitation is the lack of molecular biomarkers, ethnicity, genetic and genomic information. For instance, in familial studies, there is always the issue of assurance of paternity.<sup>47</sup> However, a recent Swedish study shows that among offspring born 1950 and later the frequency of misattributed paternity in Sweden is low (1.7%) and has decreased to 1%. Another limitation is that the study was limited to Sweden, which may limit the generalisability of the findings to other populations and ethnicities. In

addition, the observational nature of the study does not allow for establishing causality between familial risk and VSA development. Other limitations include the evolving diagnostic criteria for VSA over time, the inconsistent application of diagnostic techniques to demonstrate coronary vasospasm and the lack of direct access to original diagnostic investigations. COVADIS criteria were proposed first in 2013 and most of the database-derived diagnoses were established before this date. However, after the exclusion of cases where coronary angiography was not performed during the index hospital admission, the association between familial relationship and VSA diagnosis was even stronger.

## CONCLUSIONS

In this nationwide family study, we identified strong hereditary components in VSA with genetic resemblance. The familial association was independent of cardiovascular risk factors and clinically relevant comorbidities. Our results indicate that VSA tends to cluster in families, implying that uncovering the sources of this familial aggregation, including both genetic and non-genetic factors, could be valuable. This knowledge has relevant implications for the clinical evaluation of patients with suspected VSA, risk assessment of family members and the development of personalised prevention and treatment strategies. Additionally, the findings highlight the need for continued research to elucidate the genetic and non-genetic factors contributing to VSA.

**Twitter** Artur Fedorowski @ArturFedorowski

**Contributors** FR, BB, AF, BZ, KS, JS and MP had full access to all the data in the study and take responsibility of the data and accuracy of the data analysis. AF, FR, RS and AF contributed to the study conception and design. BZ, KS and JS contributed to the acquisition of data. All authors analysed and interpreted the data. BZ was the study supervisor. BZ and MP did the statistical analysis. FR, AF and BZ drafted the manuscript with critical revision for important intellectual content from all authors. BZ is responsible for the overall content as the guarantor.

**Funding** The registers used in the present study are maintained by Statistics Sweden and the National Board of Health and Welfare. This work was supported by grants awarded to Bengt Zöller and Kristina Sundquist by ALF funding from Region Skåne; grants awarded to Bengt Zöller and Kristina and Jan Sundquist by the Swedish Research Council; to Bengt Zöller by Sparbanken Skåne; and a grant awarded to Kristina Sundquist by the Swedish Heart Lung Foundation. The funders had no role in the design and conduct of the study; collection, management, analysis and interpretation of the data; preparation, review or approval of the manuscript; and decision to submit the manuscript for publication.

**Competing interests** AF has received speaker fees from Medtronic Inc., Biotronik, and Bristol-Myers Squibb and is consultant to Medtronic Inc. and Argenx BV. RS is a consultant to Medtronic Inc., a member of the speakers' bureau of Abbott (SJM) Laboratories Corp. and a shareholder in Edwards Lifesciences Corp. and Boston Scientific Corp. No other disclosures were reported. The remaining authors have nothing to disclose. All authors have completed the ICMJE uniform disclosure at [www.icmje.org/coi\\_disclosure.pdf](http://www.icmje.org/coi_disclosure.pdf)

**Patient consent for publication** Not applicable.

**Provenance and peer review** Not commissioned; externally peer reviewed.

**Data availability statement** Data are available upon reasonable request.

**Supplemental material** This content has been supplied by the author(s). It has not been vetted by BMJ Publishing Group Limited (BMJ) and may not have been peer-reviewed. Any opinions or recommendations discussed are solely those of the author(s) and are not endorsed by BMJ. BMJ disclaims all liability and

responsibility arising from any reliance placed on the content. Where the content includes any translated material, BMJ does not warrant the accuracy and reliability of the translations (including but not limited to local regulations, clinical guidelines, terminology, drug names and drug dosages), and is not responsible for any error and/or omissions arising from translation and adaptation or otherwise.

**Open access** This is an open access article distributed in accordance with the Creative Commons Attribution 4.0 Unported (CC BY 4.0) license, which permits others to copy, redistribute, remix, transform and build upon this work for any purpose, provided the original work is properly cited, a link to the licence is given, and indication of whether changes were made. See: <https://creativecommons.org/licenses/by/4.0/>.

## ORCID iDs

Fabrizio Ricci <http://orcid.org/0000-0002-1401-6623>

Artur Fedorowski <http://orcid.org/0000-0002-5352-6327>

## REFERENCES

- Kunadian V, Chieffo A, Camici PG, *et al*. An EAPCI expert consensus document on ischaemia with non-obstructive coronary arteries in collaboration with European society of cardiology working group on coronary pathophysiology & microcirculation endorsed by coronary vasomotor disorders international study group. *Eur Heart J* 2020;41:3504–20.
- Radico F, Zimarino M, Fulgenzi F, *et al*. Determinants of long-term clinical outcomes in patients with angina but without obstructive coronary artery disease: a systematic review and meta-analysis. *Eur Heart J* 2018;39:2135–46.
- Igarashi Y, Tamura Y, Suzuki K, *et al*. Coronary artery spasm is a major cause of sudden cardiac arrest in survivors without underlying heart disease. *Coron Artery Dis* 1993;4:177–85.
- Lanza GA, Sestito A, Sgueglia GA, *et al*. Current clinical features, diagnostic assessment and prognostic determinants of patients with variant angina. *Int J Cardiol* 2007;118:41–7.
- Cohen MC, Rohlta KM, Lavery CE, *et al*. Meta-analysis of the morning excess of acute myocardial infarction and sudden cardiac death. *Am J Cardiol* 1997;79:1512–6.
- Walling A, Waters DD, Miller DD, *et al*. Long-term prognosis of patients with variant angina. *Circulation* 1987;76:990–7.
- Prinzmetal M, Kenamer R, Merliss R, *et al*. A variant form of angina pectoris; preliminary report. *Am J Med* 1959;27:375–88.
- Beltrame JF, Crea F, Kaski JC, *et al*. International standardization of diagnostic criteria for vasospastic angina. *Eur Heart J* 2017;38:2565–8.
- Hokimoto S, Kaikita K, Yasuda S, *et al*. JCS/CVIT/JCC 2023 guideline focused update on diagnosis and treatment of vasospastic angina (coronary spastic angina) and coronary microvascular dysfunction. *Circ J* 2023;87:879–936.
- Mauritson DR, Peshock RM, Winniford MD, *et al*. Prinzmetal's variant angina: is it transmitted genetically? *Am Heart J* 1983;105:1049.
- Tran MV, Marceau E, Lee PY, *et al*. The smoking paradox: a twist in the tale of vasospastic angina. *J Vasc Med Surg* 2021;9:438.
- Beltrame JF, Sasayama S, Maseri A. Racial heterogeneity in coronary artery vasomotor reactivity: differences between Japanese and caucasian patients. *J Am Coll Cardiol* 1999;33:1442–52.
- Rehan R, Weaver J, Yong A. Coronary vasospastic angina: a review of the pathogenesis. *Life (Basel)* 2022;12:1124.
- Murase Y, Yamada Y, Hirashiki A, *et al*. Genetic risk and gene-environment interaction in coronary artery spasm in Japanese men and women. *Eur Heart J* 2004;25:970–7.
- Nakayama M, Yoshimura M, Sakamoto T, *et al*. Synergistic interaction of T-786-->C polymorphism in the endothelial nitric oxide synthase gene and smoking for an enhanced risk for coronary spasm. *Pharmacogenetics* 2003;13:683–8.
- Guzik TJ, West NE, Black E, *et al*. Functional effect of the C242T polymorphism in the NAD(P)H oxidase P22Phox gene on vascular superoxide production in atherosclerosis. *Circulation* 2000;102:1744–7.
- Takefuji M, Asano H, Mori K, *et al*. Mutation of ARHGAP9 in patients with coronary spastic angina. *J Hum Genet* 2010;55:42–9.
- Yoshioka T, Otsui K, Suzuki A, *et al*. Vasospastic angina in identical twins. *Am J Case Rep* 2015;16:598–602.
- Tran MV, Marceau E, Liu Y, *et al*. Coronary artery vasospasm requiring cardiac autotransplantation yet controlled with tobacco. *JACC Case Rep* 2021;3:1177–81.
- Ricci F, Banihashemi B, Pirouzfard M, *et al*. Familial risk of dilated and hypertrophic cardiomyopathy: a national family study in Sweden. *ESC Heart Fail* 2023;10:121–32.

- 21 Khoury MJ, Beaty TH, Liang KY. Can familial aggregation of disease be explained by familial aggregation of environmental risk factors *Am J Epidemiol* 1988;127:674–83.
- 22 Lanza GA, Careri G, Crea F. Mechanisms of coronary artery spasm. *Circulation* 2011;124:1774–82.
- 23 Ludvigsson JF, Almqvist C, Bonamy A-KE, et al. Registers of the Swedish total population and their use in medical research. *Eur J Epidemiol* 2016;31:125–36.
- 24 Ekblom A. The Swedish multi-generation register. *Methods Mol Biol* 2011;675:215–20.
- 25 Ludvigsson JF, Andersson E, Ekblom A, et al. External review and validation of the Swedish National inpatient register. *BMC Public Health* 2011;11:450.
- 26 Brooke HL, Talbäck M, Hörnblad J, et al. The Swedish cause of death register. *Eur J Epidemiol* 2017;32:765–73.
- 27 Laugesen K, Ludvigsson JF, Schmidt M, et al. Nordic health registry-based research: a review of health care systems and key registries. *Clin Epidemiol* 2021;13:533–54.
- 28 Zöller B, Ohlsson H, Sundquist J, et al. Familial risk of venous thromboembolism in First-, second- and third-degree relatives: a nationwide family study in Sweden. *Thromb Haemost* 2013;109:458–63.
- 29 Waehrens R, Ohlsson H, Sundquist J, et al. Risk of irritable bowel syndrome in first-degree, second-degree and third-degree relatives of affected individuals: a nationwide family study in Sweden. *Gut* 2015;64:215–21.
- 30 Zöller B, Svensson PJ, Sundquist J, et al. Postoperative joint replacement complications in Swedish patients with a family history of venous thromboembolism. *JAMA Netw Open* 2018;1:e181924.
- 31 Lander ES, Schork NJ. Genetic dissection of complex traits. *Science* 1994;265:2037–48.
- 32 Burton PR, Tobin MD, Hopper JL. Key concepts in genetic epidemiology. *Lancet* 2005;366:941–51.
- 33 Aziz A, Hansen HS, Sechtem U, et al. Sex-related differences in vasomotor function in patients with angina and unobstructed coronary arteries. *J Am Coll Cardiol* 2017;70:2349–58.
- 34 Khuddus MA, Pepine CJ, Handberg EM, et al. An intravascular ultrasound analysis in women experiencing chest pain in the absence of obstructive coronary artery disease: a Substudy from the National heart, lung and blood Institute-sponsored women's ischemia syndrome evaluation (WISE). *J Interv Cardiol* 2010;23:511–9.
- 35 Montone RA, Rinaldi R, Del Buono MG, et al. Safety and prognostic relevance of acetylcholine testing in patients with stable myocardial ischaemia or myocardial infarction and non-obstructive coronary arteries. *EuroIntervention* 2022;18:e666–76.
- 36 Lanza GA, Pedrotti P, Pasceri V, et al. Autonomic changes associated with spontaneous coronary spasm in patients with variant angina. *J Am Coll Cardiol* 1996;28:1249–56.
- 37 Cardona-Guarache R, Pozen J, Jahangiri A, et al. Thoracic sympathectomy for severe refractory multivessel coronary artery spasm. *Am J Cardiol* 2016;117:159–61.
- 38 Takaoka K, Yoshimura M, Ogawa H, et al. Comparison of the risk factors for coronary artery spasm with those for organic stenosis in a Japanese population: role of cigarette smoking. *Int J Cardiol* 2000;72:121–6.
- 39 Visseren FLJ, Mach F, Smulders YM, et al. 2021 ESC guidelines on cardiovascular disease prevention in clinical practice. *Eur Heart J* 2021;42:3227–337.
- 40 Knuuti J, Wijns W, Saraste A, et al. 2019 ESC guidelines for the diagnosis and management of chronic coronary syndromes. *Eur Heart J* 2020;41:407–77.
- 41 Hokimoto S, Kaikita K, Yasuda S, et al. JCS/CVIT/JCC 2023 guideline focused update on diagnosis and treatment of Vasospastic angina (coronary spastic angina) and coronary microvascular dysfunction. *Circ J* 2023;87:879–936.
- 42 Suzuki S, Yoshimura M, Nakayama M, et al. A novel genetic marker for coronary spasm in women from a genome-wide single nucleotide polymorphism analysis. *Pharmacogenet Genomics* 2007;17:919–30.
- 43 Manfrini O, Bazzocchi G, Luati A, et al. Coronary spasm reflects inputs from adjacent esophageal system. *Am J Physiol Heart Circ Physiol* 2006;290:H2085–91.
- 44 Miller D, Waters DD, Warnica W, et al. Is variant angina the coronary manifestation of a generalized vasospastic disorder *N Engl J Med* 1981;304:763–6.
- 45 Basic C, Rosengren A, Lindström S, et al. High validity of cardiomyopathy diagnoses in Western Sweden (1989–2009). *ESC Heart Fail* 2018;5:233–40.
- 46 Magnusson P, Palm A, Branden E, et al. Misclassification of hypertrophic cardiomyopathy: validation of diagnostic codes. *Clin Epidemiol* 2017;9:403–10.
- 47 Dahlén T, Zhao J, Magnusson PKE, et al. The frequency of misattributed paternity in Sweden is low and decreasing: a nationwide cohort study. *J Intern Med* 2022;291:95–100.



**Supplementary Tables S1-S8****Table S1. Exclusion codes used in Table S4 for myocardial revascularization**

	<b>Surgery and medical codes</b>
CABG	FNA00, FNA10, FNA20, FNA96, FNB00, FNB20, FNB96, FNC10, FNC20, FNC30, FNC40, FNC50, FNC60, FNC96, FND10, FND20, FND96, FNE00, FNE10, FNE20, FNE96
Other coronary interventions, including PCI	FNF00, FNF10, FNF20, FNF30, FNF96, FNG00, FNG02, FNG05, FNG10, FNG20, FNG22, FNG30, FNG96, FNH00, FNH10, FNH20, FNH96, FNJ00, FNJ02, FNJ10, FNJ12, FNJ96, FNK00, FNK10, FNK20, FNK96, FNW96, FNW98

**Table S2. Familial risk among of vasospastic angina (VSA) stratified by year of birth.**

Year of birth	Variable	Person-years, No.	Cases, No./Persons at risk, No.	Incidence rate, cases/1000 person-years	Incidence rate ratio (95%CI)	HR(95% CI)		
						<b>Model 1</b>	<b>Model 2</b>	<b>Model 3</b>
< 1955	Sibling not affected	58166669	6165/2988167	0.11 (0.10-0.11)	1 [Reference]	1 [Reference]	1 [Reference]	1 [Reference]
	Sibling affected	111761	38/5864	0.34 (0.25-0.47)	3.21 (2.33-4.41)	3.20 (2.08-4.92)	3.05 (1.98-4.70)	2.36 (1.54-3.63)
≥ 1955	Sibling not affected	129742644	1636/7148476	0.01 (0.01-0.01)	1 [Reference]	1 [Reference]	1 [Reference]	1 [Reference]
	Sibling affected	40713	10/1985	0.24 (0.13-0.46)	19.48 (10.46-36.27)	18.99 (8.77-41.16)	6.31 (2.92-13.64)	4.63 (2.12-10.14)

Abbreviations: HR=hazard ratio, CI=confidence interval.

Model 1 unadjusted. Model 2 adjusted for birth year, sex and educational attainment. Model 3 additionally adjusted for Hypertension, Hyperlipidemia, COPD, Obesity, Diabetes mellitus, Myocardial infarction, Raynaud's phenomenon, Migraine, Cluster headache Horton syndrome, Myocarditis, Malignancy, Oesophageal disease, Alcohol abuse, Cocaine abuse, Tobacco use. All calculations are based on double entry and 95% CI are calculated using robust standard errors.

**Table S3. Familial risk of recurrent episodes ( $\geq 2$ ) of vasospastic angina (VSA) in the national patient register (NPR).**

Variable	Person-years, No.	Cases, No./Persons at risk, No.	Incidence rate, cases/1000 person-years	Incidence rate ratio (95%CI)	HR(95% CI)		
					<b>Model 1</b>	<b>Model 2</b>	<b>Model 3</b>
Sibling not affected	188000518	3119/10141357	0.02 (0.02-0.02)	1 [Reference]	1 [Reference]	1 [Reference]	1 [Reference]
Sibling affected	61269	16/3135	0.26 (0.16-0.43)	15.74 (9.63-25.73)	15.86 (8.01-31.40)	7.54 (3.79-14.99)	5.45 (2.80-10.62)

Abbreviations: HR=hazard ratio, CI=confidence interval.

Model 1 unadjusted. Model 2 adjusted for birth year, sex and educational attainment. Model 3 additionally adjusted for Hypertension, Hyperlipidemia, COPD, Obesity, Diabetes mellitus, Myocardial infarction, Raynaud's phenomenon, Migraine, Cluster headache Horton syndrome, Myocarditis, Malignancy, Esophageal disease, Alcohol abuse, Cocaine abuse, Tobacco use. All calculations are based on double entry and 95% CI are calculated using robust standard errors.

**Table S4. Familial risk of vasospastic angina (VSA) defined by diagnosis of VSA and the occurrence of coronary angiography (AF037) during the same date in the national patient register (NPR).**

Variable	Person-years, No.	Cases, No./Persons at risk, No.	Incidence rate, cases/1000 person-years	Incidence rate ratio (95%CI)	HR(95% CI)		
					<b>Model 1</b>	<b>Model 2</b>	<b>Model 3</b>
Sibling not affected	188036507	1286/10143204	0.01 (0.01-0.01)	1 [Reference]	1 [Reference]	1 [Reference]	1 [Reference]
Sibling affected	25280	2/1288	0.08 (0.02-0.32)	11.57 (2.89-46.30)	11.38 (1.64-78.89)	6.06 (0.86-42.90)	4.31 (0.62-30.15)

Abbreviations: HR=hazard ratio, CI=confidence interval.

Model 1 unadjusted. Model 2 adjusted for birth year, sex and educational attainment. Model 3 additionally adjusted for Hypertension, Hyperlipidemia, COPD, Obesity, Diabetes mellitus, Myocardial infarction, Raynaud's phenomenon, Migraine, Cluster headache Horton syndrome, Myocarditis, Malignancy, Esophageal disease, Alcohol abuse, Cocaine abuse, Tobacco use. All calculations are based on double entry and 95% CI are calculated using robust standard errors.



**Table S5. Sibling risk of vasospastic angina (VSA) after exclusion of VSA cases undergoing myocardial revascularization according to Table S1 at the same date of diagnosis**

Variable	Person-years, No.	Cases, No./Persons at risk, No.	Incidence rate, cases/1000 person-years	Incidence rate ratio (95%CI)	HR(95% CI)		
					<b>Model 1</b>	<b>Model 2</b>	<b>Model 3</b>
Sibling not affected	187905469	7424/10136266	0.04 (0.04-0.04)	1 [Reference]	1 [Reference]	1 [Reference]	1 [Reference]
Sibling affected	145115	42/7466	0.29 (0.21-0.39)	7.33 (5.41-9.92)	7.37 (4.84-11.23)	3.28 (2.15-5.01)	2.52 (1.65-3.84)

Abbreviations: HR=hazard ratio, CI=confidence interval.

Model 1 unadjusted. Model 2 adjusted for birth year, sex and educational attainment. Model 3 additionally adjusted for Hypertension, Hyperlipidemia, COPD, Obesity, Diabetes mellitus, Myocardial infarction, Raynaud's phenomenon, Migraine, Cluster headache Horton syndrome, Myocarditis, Malignancy, Esophageal disease, Alcohol abuse, Cocaine abuse, Tobacco use. All calculations are based on double entry and 95% CI are calculated using robust standard errors.

**Table S6. Sibling risk of vasospastic angina (VSA) stratified by age difference between siblings.**

Age difference	Variable	Person-years, No.	Cases, No./Persons at risk, No.	Incidence rate, cases/1000 person-years	Incidence rate ratio (95%CI)	HR(95% CI)		
						<b>Model 1</b>	<b>Model 2</b>	<b>Model 3</b>
< 6 years	Sibling not affected	129571172	4933/ 7111605	0.04 (0.04-0.04)	1 [Reference]	1 [Reference]	1 [Reference]	1 [Reference]
	Sibling affected	96110	32/4965	0.33 (0.24-0.47)	8.75 (6.18-12.38)	8.79 (5.40-14.29)	3.36 (2.06-5.47)	2.59 (1.59-4.21)
≥ 6 years	Sibling not affected	58338141	2868/ 3025038	0.05 (0.05-0.05)	1 [Reference]	1 [Reference]	1 [Reference]	1 [Reference]
	Sibling affected	56364	16/2884	0.28 (0.17-0.46)	5.77 (3.53-9.44)	5.79 (2.92-11.50)	3.42 (1.72-6.78)	2.48 (1.26-4.90)

Abbreviations: HR=hazard ratio, CI=confidence interval.

Model 1 unadjusted. Model 2 adjusted for birth year, sex and educational attainment. Model 3 additionally adjusted for Hypertension, Hyperlipidemia, COPD, Obesity, Diabetes mellitus, Myocardial infarction, Raynaud's phenomenon, Migraine, Cluster headache Horton syndrome, Myocarditis, Malignancy, Oesophageal disease, Alcohol abuse, Cocaine abuse, Tobacco use. All calculations are based on double entry and 95% CI are calculated using robust standard errors.

**Table S7. Familial risk of vasospastic angina (VSA) in spouses of affected individuals.**

Variable	Person-years, No.	Cases, No./Persons at risk, No.	Incidence rate, cases/1000 person-years	Incidence rate ratio (95%CI)	HR(95% CI)		
					<b>Model 1</b>	<b>Model 2</b>	<b>Model 3</b>
Spouse not affected	187933547	7841/ 10136643	0.04 (0.04-0.04)	1 [Reference]	1 [Reference]	1 [Reference]	1 [Reference]
Spouse affected	128240	8/ 6529	0.06 (0.03-0.12)	1.50 (0.75-2.99 )	1.51 (0.46-4.99)	0.69 (0.21-2.30)	0.63 (0.19-2.09)

Abbreviations: HR=hazard ratio, CI=confidence interval.

Model 1 unadjusted. Model 2 adjusted for birth year, sex and educational attainment. Model 3 additionally adjusted for Hypertension, Hyperlipidemia, COPD, Obesity, Diabetes mellitus, Myocardial infarction, Raynaud's phenomenon, Migraine, Cluster headache Horton syndrome, Myocarditis, Malignancy, Oesophageal disease, Alcohol abuse, Cocaine abuse, Tobacco use. All calculations are based on double entry and 95% CI are calculated using robust standard errors.

**Table S8. Crude and multivariate Cox proportional hazard models.**

	Reference	HR (95% CI)		
		Model 1	Model 2	Model 3
<b>Sibling affected</b>	No	7.64 (5.17-11.31)	3.39 (2.28-5.03)	2.56 (1.73-3.79)
<b>Female Sex</b>	Male	1.87 (1.72-2.03)	1.80 (1.66-1.96)	2.41 (2.13-2.63)
<b>Year of born</b>		0.93 (0.92-0.93)	0.93 (0.93-0.93)	0.96 (0.95-0.96)
<b>Education</b>				
10-11 years	Unknown or	0.51 (0.46-0.56)	1.04 (0.94-1.15)	1.11 (1.01-1.23)
>11 years	1-9 years	0.29 (0.26-0.32)	0.85 (0.76-0.96)	1.08 (0.96-1.21)
<b>Comorbidity</b>				
Hypertension	No	12.10 (11.11-13.17)		2.38 (2.09-2.71)
Hyperlipidemia	No	16.39 (15.12-17.77)		3.52 (3.13-3.95)
COPD	No	5.20 (4.57-5.91)		1.09 (0.95-1.25)
Obesity	No	2.89 (2.49-3.34)		1.25 (1.08-1.46)
Diabetes mellitus	No	4.92 (4.47-5.43)		0.93 (0.83-1.03)
Myocardial infarction	No	17.00 (15.59-18.55)		3.59 (3.20-4.02)
Raynaud's phenomenon	No	5.94 (3.44-10.24)		3.10 (1.78-5.40)
Migraine	No	2.41 (2.02-2.87)		2.29 (1.91-2.73)
Cluster headache Horton syndrome	No	1.69 (0.64-4.44)		1.08 (0.41-2.87)
Myocarditis	No	5.38 (3.46-8.39)		3.16 (2.05-4.87)
Malignancy	No	2.98 (2.72-3.26)		1.04 (0.94-1.14)
Esophageal disease	No	4.98 (4.47-5.56)		2.02 (1.81-2.27)
Alcohol abuse	No	1.50 (1.26-1.80)		1.27 (1.06-1.53)
Cocaine abuse	No	1.60 (0.32-7.97)		2.09 (0.42-10.42)
Tobacco use	No	4.74 (4.13-5.45)		1.32 (1.14-1.54)

Abbreviations: HR=hazard ratio, CI=confidence interval. Model 1 crude. Model 2 Prinzmetal adjusted for birth year, sex and educational attainment. Model 3 additionally adjusted for Hypertension, Hyperlipidemia, COPD, Obesity, Diabetes mellitus, Myocardial infarction, Raynaud's phenomenon, Migraine, Cluster headache Horton syndrome, Myocarditis, Malignancy, Esophageal disease, Alcohol abuse, Cocaine abuse, Tobacco use. All calculations are based on double entry and 95% CI are calculated using robust standard errors.



# Familial Risk of Vasospastic Angina: a Nationwide Family Study in Sweden



Sweden



N=5,764,770

Full-siblings cohort

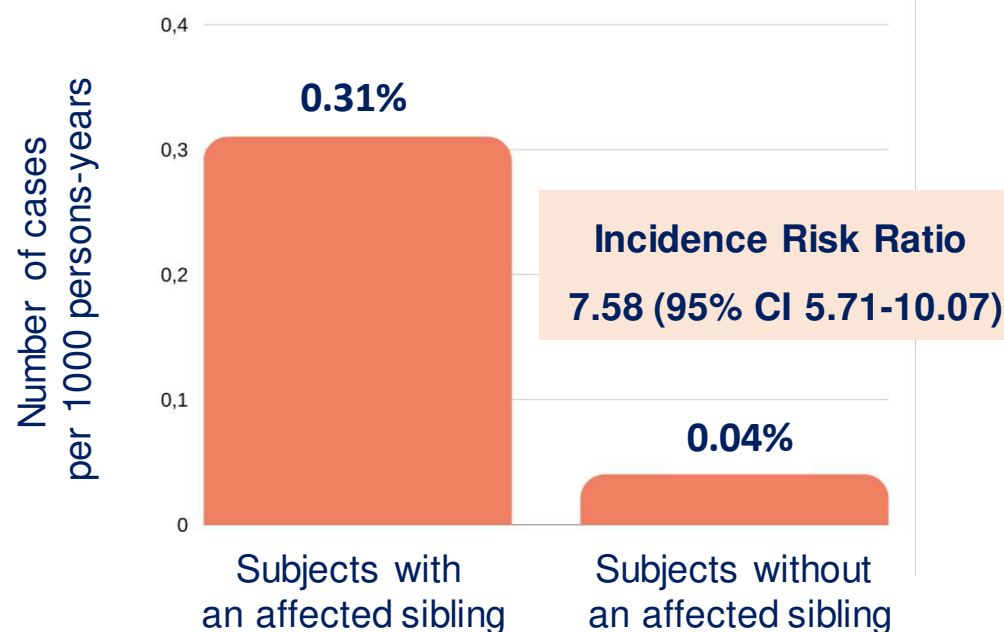


1932 - 2018



Multi-Generation & National Patient Registers

## Incident Rate of Vasospastic Angina



## Risk of vasospastic angina in subjects with an affected sibling compared with siblings without an affected sibling

