

Supplementary Material

Supplemental table 1: ICD and Procedure-codes

Category	Type	Codes
Study population		
<u>Aortic valve</u>	NOMESCO	
Prosthesis		KFMD
Mechanical		KFMD00
Biological		KFMD10, KFMD11, KFMD12, KFMD14, KFMD20, KFMD30, KFMD33, KFMD40, KFMD96, KFCA60, KFCA70
<u>Mitral valve</u>	NOMESCO	
Prosthesis		KFKD
Mechanical		KFKD00
Biological		KFKD10, KFKD11, KFKD14, KFKD20, KFKD96
<u>Pulmonary valve</u>	NOMESCO	
Prosthesis		KFJF
Mechanical		KFJF00
Biological		KFJF10, KFJF30

<u>Tricuspid valve</u>	NOMESCO	
Prosthesis		KFGE
Mechanical		KFGE00
Biological		KFGE10

Outcome

IE-diagnosis	ICD-10	I33.x, I38.x or I39.8
	ICD-8	421

IE: Infective endocarditis. ICD: International Classification of Diseases. NOMESCO: Danish procedure codes for medical examination organized by The Nordic Medico-Statistical Committee.

Supplementary Table 1. The table shows specific codes used to derive type of valve surgery and the study population.

Supplemental table 2: ICD- and Procedure-, and ATC-codes

Category	Type	Codes
Comorbidities		
Cardiac implantable electronic devices	Danish procedure codes for medical examinations	BFCA0, BFCB0
Extraction of cardiac implantable electronic devices	Danish procedure codes for medical examinations	BFCA4, BFCB4, BFCB8
Diabetes	ICD-10	E10.x to E14.x
	ICD-8	250
Dialysis (chronic)	Danish procedure codes for medical examinations	BJFD2
Renal disease	ICD-10	E10.2, E11.2, E13.2, E14.2 I12.0 I13.x N02.x to N08.x, N11.x, N12.x, N14.x, N15.8, N15.9, N16.0, N16.2 to N16.4, N16.8, N18.x, N19.x, N26.x Q61.2, Q61.3, Q61.5, Q61.9 Z99.2
	ICD-8	25002 403, 404, 40039 581, 582, 583, 584, 59009, 59320 75310, 75311, 75319
Liver disease	ICD-10	B15.x to B19.x, C22.x, D68.4C I98.2, K70.x to K77.0, Q61.8A, Z94.4
	ICD-8	070, 155, 571 to 573
Atrial fibrillation/flutter	ICD-10	I48
	ICD-8	42793, 42794
Congestive heart failure	ICD-10	I11.0, I13.0, I13.2, I42.x, I50.x J81.9
	ICD-8	425, 428
Myocardial infarction	ICD-10	I21.x, I22.x
	ICD-8	410 to 414

Disease of the mitral valve	ICD-10 ICD-8	I34 394, 396
Disease of the aortic valve	ICD-10 ICD-8	I35 395, 396
Ischemic/haemorrhagic stroke	ICD-10 ICD-8	I60.x to I64.x 430 to 436
Chronic obstructive lung disease	ICD-10 ICD-8	J42, J43, J44 490, 491, 492
Malignancy	ICD-10 ICD-8	C00 to C97 140 to 209
Medicine		
Antihypertensive medication	ATC	C02A, C02B, C02C, C02DA, C02DB, C02DD, C02DG, C02L, C03A-B, C03D-E, C03X, C07A-D, C07F, C08 C08G, C09AA, C09BA, C09BB, C09CA, C09DA, C09DB, C09XA02, C09XA52
Lipid Lowering medication	ATC	C10
Oral anticoagulants	ATC	
<i>Vitamin-K antagonists</i>		B01AA
<i>NOAC¹</i>		B01AF01, B01AF02, B01AF03, B01AE07
Glucose Lowering medication	ATC	A10A, A10B

“x” indicates every sub-classification ATC code

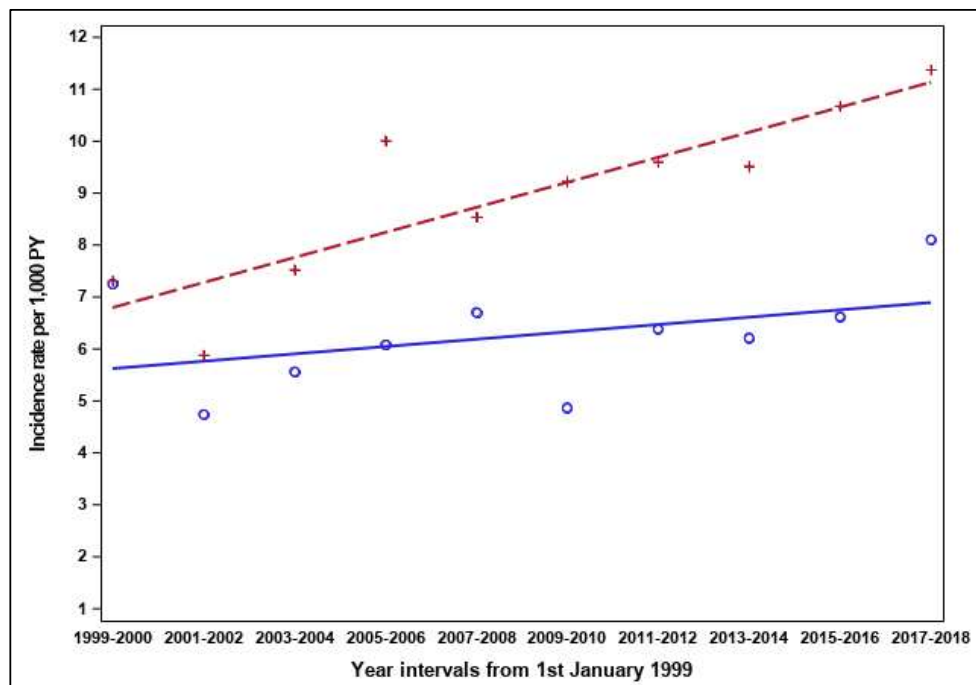
¹ Novel Oral Anticoagulant

ATC: Anatomical Therapeutic Chemical Classification System.

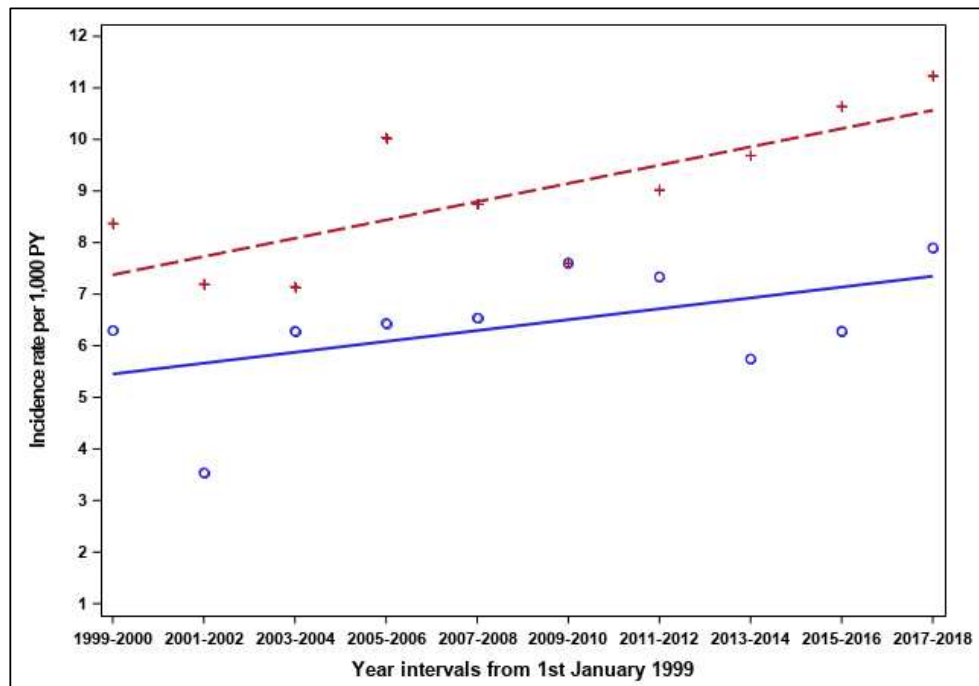
ICD: International Classification of Diseases. NOMESCO: Danish procedure codes for medical examination organized by The Nordic Medico-Statistical Committee.

Supplementary Table 2. The table shows specific codes used to derive comorbidities and concomitant pharmacotherapy.

Supplemental Figures and Legends



Supplemental figure 1: Crude incidence rates per 1,000 person years (PY) of IE per two-year intervals. Analyses were stratified by sex (women (blue) and men (red)). A linear regression model was plotted to examine crude difference per calendar year.



Supplemental figure 2: Crude incidence rates per 1,000 person years (PY) of IE per two-year intervals. Analyses were stratified by age groups (<70 (blue) and ≥70 (red) years). A linear regression model was plotted to examine crude difference per calendar year.