

openheart Late-onset and classic phenotypes of Fabry disease in males with the *GLA*-Thr410Ala mutation

Kati Valtola,¹ Marja Hedman,^{2,3} Ilkka Kantola,⁴ Susanne Walls,⁴ Seppo Helisalmi,^{3,5} Maleeha Maria,⁶ Joose Raivo,^{3,5} Christiane Auray-Blais,⁷ Johanna Kuusisto ^{8,9}

► Additional supplemental material is published online only. To view, please visit the journal online (<http://dx.doi.org/10.1136/openhrt-2023-002251>).

To cite: Valtola K, Hedman M, Kantola I, *et al.* Late-onset and classic phenotypes of Fabry disease in males with the *GLA*-Thr410Ala mutation. *Open Heart* 2023;**10**:e002251. doi:10.1136/openhrt-2023-002251

Received 4 January 2023
Accepted 27 February 2023

ABSTRACT

Objective To present phenotypic characteristics and biomarkers of a family with the rare mutation Thr410Ala of the α -galactosidase A gene (*T410A/GLA*) causing Fabry disease (FD).

Methods and results In a woman in her 60s with hypertrophic cardiomyopathy, *T410A/GLA* was found in screening for variants in 59 cardiomyopathy-related genes. Her son in his 40s, two granddaughters and two great grandsons carried *T410A/GLA*. The son had a history of hypertension and paroxysmal AF but no microalbuminuria or classic symptoms or signs of FD. Baseline α -galactosidase A enzyme (α -Gal A) activity varied from 0% to 26.5%. Cardiac MRI showed mild Fabry cardiomyopathy (FC). During 11 years of enzyme replacement therapy (ERT), FC progressed and he suffered sudden cardiac death in his 50s. The great grandsons with *T410A/GLA* had no active α -Gal A, high lyso-Gb₃ levels and normal cardiac imaging. They suffered from neuropathic pain and gastrointestinal symptoms and were started with ERT at the age under 10. Granddaughters with *T410A/GLA* had α -Gal A activities of 8–18 and 10% of normal. The older granddaughter in her 30s was diagnosed with incipient FC. Plasma lyso-Gb₃ analogues were elevated, markedly in the elder male with FC and moderately in the elder granddaughter. In young males with classic phenotype, plasma lyso-Gb₃ analogues were only slightly elevated.

Conclusions The *T410A/GLA* mutation caused late-onset FD with progressive cardiomyopathy in elder male, and classic FD in young males of the same family. Varying levels of α -Gal A and lyso-Gb₃ analogues reflected variable phenotype of FD in the family.

INTRODUCTION

Fabry disease (FD) is an X chromosome-linked lysosomal storage disease caused by mutations in the α -galactosidase A gene (*GLA*). Patients with pathological *GLA* mutations have decreased levels of functional α -galactosidase A enzyme (α -Gal A) leading to progressive accumulation of glycosphingolipids, mainly globotriaosylceramide (Gb₃) and globotriaosylsphingosine (lyso-Gb₃), in the lysosomes of several organs, interfering with organ function in the long term. Previously,

WHAT IS ALREADY KNOWN ON THIS TOPIC

⇒ *T410A/GLA* is a rare mutation causing classical Fabry disease (FD), with early-onset neuropathic pain and left ventricular hypertrophy.

WHAT THIS STUDY ADDS

⇒ Manifestations of FD in the family may vary significantly not only between males and females but also between males with *T410A/GLA*. Cardiomyopathy may progress during recommended dose enzyme replacement therapy (ERT) and cardiovascular medication even if there are only mild myocardial changes with no fibrosis when ERT is started.

HOW THIS STUDY MIGHT AFFECT RESEARCH, PRACTICE OR POLICY

⇒ All family members with the *GLA* mutation should be carefully monitored by biomarkers and cardiac imaging since childhood and all treatment decisions should be made individually. In addition to the type of the FD causing mutation, and age and gender of the patient, also α -Gal A activity and levels of lyso-Gb₃ and its analogues may give a clue to the evolution of the phenotype in the patient. In patients with progressive fabry cardiomyopathy and risk factors for sudden cardiac death, consider implantable cardioverter-defibrillator.

FD was considered rare, affecting only 1 in 40 000–1 in 117 000 live male births. Large-scale newborn screening studies, however, have shown unexpectedly high prevalence of FD causing mutations suggesting incidence of 1 in 3100–4600 individuals.¹

Of the over 1000 *GLA* variants reported, at least 60% are missense mutations.² Most often, each family has its own rare mutation, limiting evidence for its pathogenicity.^{3,4} Genotype–phenotype correlations of many *GLA* mutations are still poorly understood. As a practical approach, FD is divided into classic or late-onset form of FD. Classic form of FD is less common, and it is caused by severe defects of the *GLA*, such as deletions, or mutations leading to stop codon, but also with severe missense mutations, leading to



© Author(s) (or their employer(s)) 2023. Re-use permitted under CC BY-NC. No commercial re-use. See rights and permissions. Published by BMJ.

For numbered affiliations see end of article.

Correspondence to

Dr Johanna Kuusisto; johanna.kuusisto@kuh.fi

absent or near absent α -Gal A activity under 5% in hemizygous males. Classic FD is characterised by severe symptoms like neuropathic pain and gastrointestinal problems early in childhood, and progressive kidney failure, brain lesions and cardiomyopathy before middle-age. Angiokeratomas and cornea verticillata may be present from birth. In the more common late-onset FD, missense mutations of the *GLA* are less severe, and men have residual α -Gal A activity over 5%. Patients remain quite asymptomatic until the third decade of life when cardiomyopathy, the most common and often only manifestation of the disease, and neurological and renal manifestations appear.^{5,6}

The phenotype of FD is affected by not only the gene defect, but also gender and age. In heterozygous women, disease severity varies according to the mutation type and random inactivation of the X chromosome.⁷ The clinical presentation may also vary in the same family with the same *GLA* mutation, probably depending on the level α -Gal A activity and other, unknown reasons.^{3,8} Recent evidence suggests that new biomarkers, particularly plasma and urine lyso-Gb₃ and their analogues, may reflect not only the metabolic load but also affect pathogenesis of FD.^{9–13} Particularly, lyso-Gb₃ analogues may play role in the pathogenesis of cardiac hypertrophy, a hallmark of Fabry cardiomyopathy (FC).¹⁴ A recent study showed associations between some of these analogues and the Left Ventricular Mass Index and the Mainz Severity Score Index in a large cohort of Fabry patients having a late-onset cardiac variant mutation.¹⁵ Patients with another cardiac variant mutation (N215S) also showed increased urinary analogue levels even higher than lyso-Gb₃ itself.¹⁶ Another study revealed that variations in the *GLA* correlated with plasma and urine lyso-Gb₃ levels.^{14,16}

To our best knowledge, no previous reports show that the same missense mutation causes both classic and late-onset FD in males of the same family. In the present study, we report clinical, imaging and biomarker characteristics of a Finnish family with FD due to a rare *GLA* missense mutation c.1228A>G p.Thr410Ala (T410A/*GLA*), where the phenotype differed from classic to late onset in males of different generations, and cardiomyopathy progressed in spite of current enzyme replacement therapy (ERT) in the male with late-onset form of the disease.

METHODS

Setting

In 2009, a Finnish index patient with hypertrophic cardiomyopathy (HCM) was genetically tested in London as a part of a European multicentre cross-sectional ACES study.¹⁷ Therein, she was found to have T410A/*GLA*, launching a subsequent family study at the Kuopio University Hospital and University of Eastern Finland. Detailed genetic, biomarker, clinical and cardiac imaging studies were performed in the family members with the T410A/*GLA* mutation. The T410A/*GLA* mutation carriers were examined and closely monitored according

to the Finnish FD protocol¹⁸ at the Kuopio University Hospital. After FD diagnosis, the index patient and her son were also followed at the Turku and Kuopio University Hospitals for 2 years when participating in the Shire TKT-028-REP060-Study,¹⁹ in which they received ERT.

Genetic analysis

Genetic analyses of the present study were performed in the Genome Centre of Eastern Finland, Kuopio. In the index patient, the genetic screening from a whole blood sample covered coding regions of the 59 genes related to cardiomyopathy, including *GLA*. In the son of the index patient, the genetic screening from a whole blood sample covered regions of 62 genes related to cardiomyopathy, including *GLA*. Cascade screening of T410A/*GLA* was performed with Sanger sequencing in all available relatives (n=13). In men with T410A/*GLA* (n=3), Sanger sequencing of the whole coding region of the *GLA* covered also at least 56 bases (maximum 376 bases) around all exons. Additionally, in male carriers of T410A/*GLA*, we investigated deep intronic variants of *GLA*, which according to the literature and genetic databases have been associated with FD.^{20–24} For details, see online supplemental information.

In silico structural analysis of mutated α -galactosidase A gene protein

Molecular structure of T410A/*GLA* mutated protein was obtained using in silico structural analysis as previously described.²⁵

Clinical examination and follow-up

T410A/*GLA* positive family members (n=6) were examined at the Kuopio University Hospital according to the Finnish FD-protocol.¹⁸ For details, see online supplemental information.

Cardiac imaging

All T410A/*GLA* positive family members (n=6) were examined by cardiac ultrasound according to current guidelines. All of them (n=5), except for the female with Rett's syndrome, were investigated by cardiac MR imaging (CMR) at least once by using 1.5 T full-body scanner (Magnetom AERA, Siemens Healthcare, Erlangen, Germany). All ventricular wall thicknesses were measured in end-diastole. For details, see online supplemental information.

Alpha-galactosidase A enzyme activity and lyso-Gb₃ levels at baseline

Alpha-galactosidase A enzyme activities were measured in all family members with T410A/*GLA* (n=6) at least once before any treatment for FD. Lyso-Gb₃ levels were investigated regularly in mutation carriers since 2014. For details, see online supplemental information.

Lyso-Gb₃ analogues

Tandem mass spectrometry analyses were performed in all three males and the elder granddaughter of the index

ChrX: g.100652859T>C, rs104894852
c.1228A>G, p.(Thr410Ala)

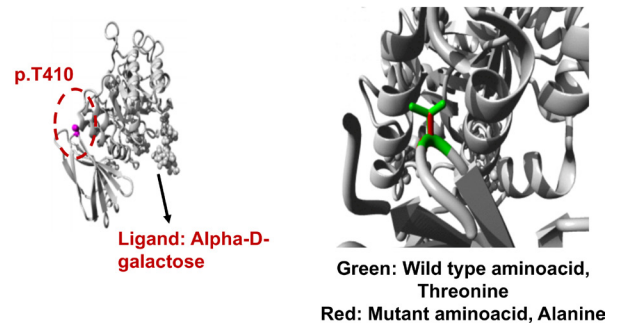


Figure 2 Structural analysis of *GLA* missense variant, c.1228A>G, p.Thr410Ala. The wild type residue is threonine (Thr410) shown as magenta coloured ball in the core of *GLA* protein. In the closer view, Thr410 is represented by green side chain whereas the mutant residue, alanine is indicated by red side chain.

In addition to the index patient, shown by arrow in [figure 1](#), five other members of the Finnish family, a son in his 40s, two granddaughters and two great grandsons of the index patient carried T410A/*GLA*. Three sisters and one brother of index female tested for T410A/*GLA* did not carry the mutation. The parents of index had passed away and two asymptomatic brothers living abroad were not available for screening.

In the son with cardiomyopathy, screening for variants in 62 cardiomyopathy-related genes including *GLA* was performed, and T410A/*GLA* but no other pathogenic variants were identified.

In the son and two great grandsons carrying T410A/*GLA*, sequencing all exons of *GLA* and potentially harmful introns (see online supplemental data) did not reveal any other pathogenic or likely pathogenic variants.

Molecular structure of T410A mutated *GLA* protein

The wild-type residue Threonine (Threonine 410) forms a hydrogen bond with Proline at position 409 (Proline 409; [figure 2](#)). The size difference between wild-type and mutant residue not only creates an empty space in protein core but also puts new residue in conformation that does not facilitate a hydrogen bond between Alanine at position 410 and Proline at position 409. The difference in hydrophobicity of wild type Threonine and variant Alanine will also affect hydrogen bond formation. This loss of a hydrogen bond within protein core may disturb correct folding of protein and therefore its function.

History and FD-related clinical and imaging findings of the T410A/*GLA* mutation carriers

Index patient

In the index patient, α -Gal A activity was 32% of normal. Lyso-Gb₃ level measured during ERT was slightly increased ([table 1](#)). She had atrial fibrillation (AF), developed dementia and died of stroke in her 70s. ([table 1](#)).

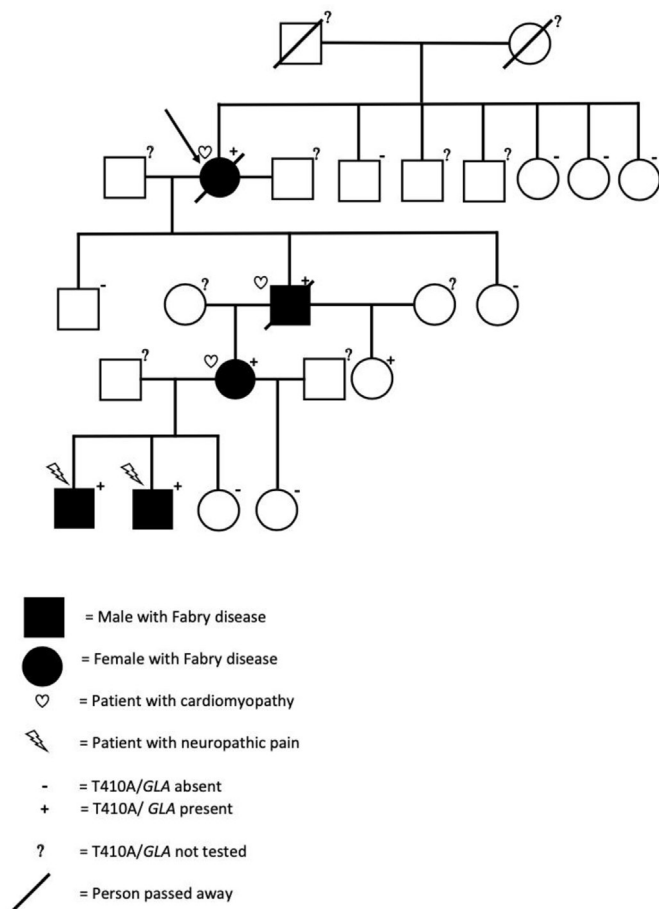


Figure 1 The family tree of the index patient (arrow) carrying T410A variant of the α -galactosidase A gene (T410A/*GLA*). Of 13 family members tested, additional 5 were carriers of T410A/*GLA* and had decreased levels of α -Gal A activity. Cardiomyopathy was diagnosed in the female index patient in her 60s, her son in his 40s and in her granddaughter in her 30s. The two grand grandsons of the index patient had neuropathic pain, gastrointestinal problems and ADHD from early age. ADHD, attention deficit hyperactivity disorder.

patient with T410A/*GLA* at the Université de Sherbrooke to discover lyso-Gb₃ analogues in plasma, and in the three males, also in urine. Samples were taken in 2019 when the males, but not the female, were on ERT. For details, see online supplemental information.

RESULTS

Genetic findings in the family

In 2009, the index patient with HCM, participating in the ACES study,¹⁷ was found to carry a novel missense mutation T410A/*GLA* (not found in GnomAD, ClinVar classification P), related to FD. The genetic findings of the index patient were confirmed in the Genome Centre of Eastern Finland in Kuopio by screening for variants in 59 cardiomyopathy-related genes including *GLA*. T410A/*GLA* but no other pathogenic or likely pathogenic variants were identified.

A cascade mutation screening of all available relatives (n=13) was performed with Sanger sequencing ([figure 1](#)).

Table 1 Biomarker and clinical data of the family members with GLA-Thr410Ala mutation

The mutation T410A carrier	The mutation T410A carrier	Son in his 40s	Granddaughter in her 20s	Granddaughter in her 10s	Great grandson under 10 years	Great grandson under 10 years
α -Gal A activity not on ERT	0.200 nmol/min/mg prot (32%, not on ERT)	1.0.00 nmol/min/mg prot (0%, not on ERT) 2a. 0.50 mikrokat/ kg prot (2%*), not on ERT) 2b. 0.610 nkat/l (26.5%*), not on ERT) 3. 0.4 micromol//h (14%, on ERT)	0.050 nmol/min/mg prot (8%, not on ERT) 3. 0.5 micromol//h (18%, not on ERT)	0.060 nmol/min/mg prot (10%, not on ERT)	0.00 nmol/min/mg prot (0%, not on ERT)	0.00 nmol/min/mg prot (0%, not on ERT)
Lyso-Gb ₃	4.0 ng/mL (on ERT)	13.1 ng/mL (on ERT)	5.5 ng/mL (not on ERT)	4.0 ng/mL (not on ERT)	20.5 ng/mL (not on ERT) 4.5 ng/mL (on ERT)	27.7 ng/mL (not on ERT) 7.1 ng/mL (on ERT)
ECG, arrhythmias	Atrial fibrillation non-sustained ventricular tachycardia	Paroxysmal atrial fibrillation non-sustained ventricular tachycardia	First degree AV block Sinus bradycardia	Normal	Normal	Normal
Neuropathy	Mild	No	No	?	Moderate-severe	Moderate-severe
Fatigue	Mild	No	Moderate-severe	?	Mild	Mild
Angkeratomia Cornea verticillata	No	No	No	No	No	No
Other	Fabry cardiomyopathy Mild microalbuminuria Dementia Stroke	Fabry cardiomyopathy microalbuminuria	Incipient Fabry cardiomyopathy	Rett's syndrome	ADHD	Gastrointestinal problems Asthma ADHD
On ERT	Agalsidase alfa from her 60s	Agalsidase alfa for the first 3 years and then agalsidase beta from his 40s	Agalsidase beta for a short period of time and then migalastate from her 30s	No	Agalsidase beta from under 10 years	Agalsidase beta from under 10 years

α -Gal A activity (normal 100–200%): measured at baseline in Kuopio University Hospital's laboratory; leucocyte α -Gal A activity (normal 0.62 nmol/min/mg protein), except measurements of the 2a–2b. Measured in Sahlgrenska University Hospital laboratory in Sweden; 2a: leucocyte α -Gal A activity (normal 22–36) mikrokat/kg protein, *) of the lowest normal range value, 2b: plasma α -Gal A activity (normal 4.6 (range 2.3–9.9 nkat/l), *) of the lowest normal range value and 3: measured 10 years later in ARCHIMEDlife laboratory in Vienna of dried blood spot sample: α -Gal A activity (normal > 2.8 μ mol//hour), the male patient was on ERT; lyso-Gb₃ (normal 0.0–3.5 ng/mL): measured in ARCHIMEDlife laboratory in Vienna of dried blood sample.

ADHD, attention deficit hyperactivity disorder; AV, atrioventricular; ERT, enzyme replacement therapy; i.v., intravenously .

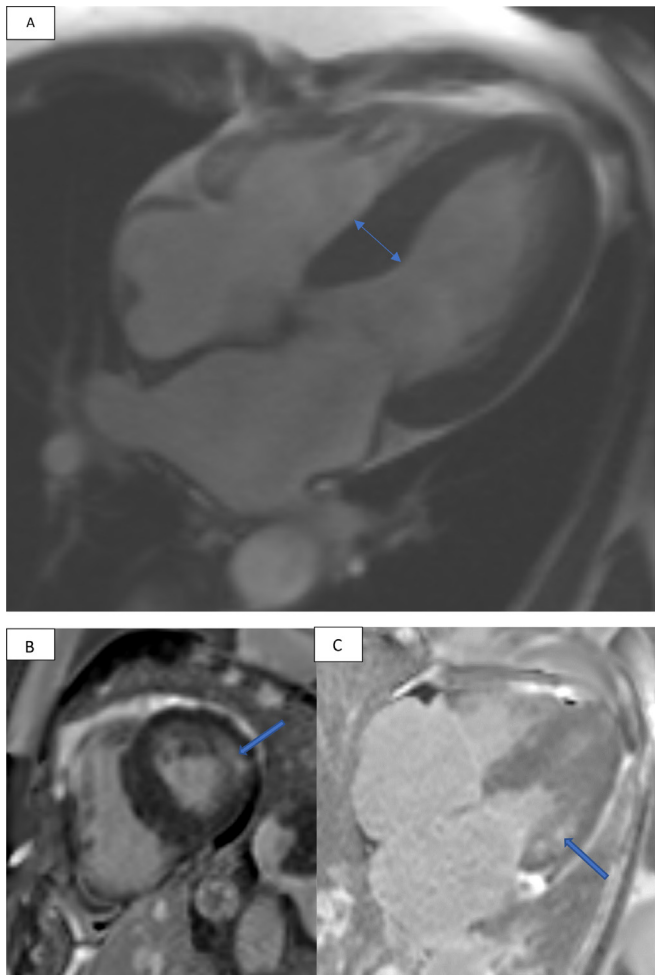


Figure 3 (A–C) The index patient, a female in her 60s. CMR showed signs of mild cardiomyopathy with the left ventricular (LV) maximal thickness of 18 mm in interventricular septum (A, arrow) and mild intramyocardial late gadolinium enhancement in the typical basal inferolateral LV area (B, C, arrows). CMR, cardiac MR.

TnT and proBNP values were slightly elevated at diagnosis. For details, see online supplemental information.

At the time of diagnosis, the echocardiography and CMR of the index female showed moderate left ventricular (LV) hypertrophy with the maximal thickness of 18 mm (figure 3A) in the normal sized (LVESD 31 mm, LVEDI 61 mL/m² LVESDI 32 mL/m²) heart with normal LV ejection fraction (62%). Mild late gadolinium enhancement (LGE) in the basal inferolateral (BIFL) area, typical of FC, was identified (figure 3B,C). During 7-year follow-up her cardiomyopathy did not progress.

A male in his 40s

At the time of diagnosis, the son in his 40s had normal kidney function, no microalbuminuria (tables 1 and 2). He had history of hypertension and recent paroxysmal AF but no microalbuminuria or classic symptoms or signs of FD. For details, see online supplemental information.

At the time of the diagnosis, there was mild LV hypertrophy (LVH) with maximal LVMWT of 13 mm, normal

ejection fraction and no LGE in CMR (table 2, figure 4A). Before starting ERT levels of α -Gal A activity were variable (0 or 2% of normal (table 1)). TnT and proBNP values were normal. CMR was repeated several times during 12 years of monitoring. During the follow-up of 11 years, when he was on optimal ERT (agalsidase alfa 0.2 mg/kg i.v. e.o.w. the first 3.5 years and on agalsidase beta 1 mg/kg i.v. e.o.w. thereafter) and cardiovascular medication, cardiomyopathy progressed. Finally, CMR showed LVMWT of 24 mm (figure 4B) and moderate myocardial LGE in the BIFL wall of the LV and mild LGE in the basal septum (figure 4C). T1 mapping in recent CMR imaging showed low (<900 ms) values throughout the LV, except for high (>1000 ms) T1 values in the BIFL fibrotic area. His last CMR showed new systolic anterior motion of the mitral valve, the LV mass was 155 g/m² (normal range 70–113 g/m²), but aortic dimensions had remained unchanged and he had no LV aneurysm. Half a year later, he suffered autopsy verified sudden cardiac death (SCD) in his 50s. The myocardium was thickened and fibrotic, there were signs of lung congestion due to heart failure, but no coronary artery disease, aortic rupture or pulmonary embolism was detected. His sudden death was most likely triggered by a ventricular arrhythmia.

A female in her 20s

The elder granddaughter of the index patient had been suffering from abnormal fatigue for years, but had no other symptoms or signs of FD (table 1). In her 30s, CMR showed signs of incipient FC.²³ For details, see table 1 and online supplemental information.

A female in her 10s

The younger granddaughter of the index patient was diagnosed with T410A/*GLA* in her 10s. Because of Rett's syndrome, she is unable to speak and must be fully assisted in all her daily activities. She has not had symptoms or signs of FD so far. Her cardiac ultrasound, ECG and creatinine, which were last examined in her 20s, were normal but lyso-Gb₃ level was slightly elevated.

Two young males

The great grandsons of the index patient have been suffering from neuropathic pain, fatigue and the younger one from gastrointestinal symptoms from early preschool age and they both have been diagnosed with attention deficit hyperactivity disorder (table 1). Their well-being has improved since they were started with ERT under age 10. ECG, cardiac ultrasound and recent CMR findings as well as creatinine and eGFR values have been normal and there has been no microalbuminuria in repeated measurements.

All family members

Angiokeratoma and cornea verticillata, typical findings of classic FD, were not detected in this family.

Table 2 Fabry biomarkers and CMR findings of the male in his 40s with *GLA*-Thr140Ala mutation

At baseline		4 years later	7 years later	10 years later	11 years later
Lyso-Gb ₃ (patient on ERT)		13,1	7,3	7,9	11,5
eGFR	80	>60	57	71	65
U-Alb	13	26	97	39	8
TnT	0.04*	22	34	37	45
pro-BNP	50	44	49	123	498
CMR	LGE- IVS 13 mm Aorta 48×46 mm LVEDD/SD 55/35 mm LVEDVI 102 mL/m ² LVESVI 38 mL/m ² LVEF 68%	LGE- IVS 19 mm Aorta 48×46 mm LVEDD 49 mm LVESD 24 mm LVEDVI 74 mL/m ² LVESVI 24 mL/m ² LVEF 68%	LGE+ IVS 22 mm Aorta 48×47 mm LVEDD 45 mm LVESD 31 mm LVEDVI 76 mL/m ² LVESVI 19 mL/m ² LVEF 74%.	LGE+ IVS 19 mm Aorta 48×47 mm LVEDD/SD 49/25 mm LVEDVI 89 mL/m ² LVESVI 23 mL/m ² LVEF 74 % Low T1 time <900 ms (except high T1 time >1000 ms in the fibrotic area posterolaterally)	LGE+ IVS 25 mm Aorta 48×46 mm LVEDD/SD 48/23 mm LVEDVI 88 mL/m ² LVESVI 22 mL/m ² LVEF 75 % SAM phenomenon
ERT	Agalsidase alfa 0.20 mg/ kg i.v. e.o.w. started at the age of 46	Agalsidase beta 1 mg/kg i.v. e.o.w.	Agalsidase beta 1 mg/kg i.v. e.o.w.	Agalsidase beta 1 mg/kg i.v. e.o.w.	Agalsidase beta 1 mg/kg i.v. e.o.w.
IgG-antibodies		Negative	Negative	Negative	Negative

Aorta, dimensions at sinus Valsalva (normal >40 mm); CMR, eGFR, (normal >60 mL/min/1.73); (normal <12 mm), this measurement from basal posterolateral septum; LGE, LVEDVI, (normal values for men 57–105 mL/m²); LVEF, left ventricular ejection fraction (normal >50%); LVESVI, (normal values for men 14–38 mL/m²); Lyso-Gb₃, (normal 0.0–3.5 ng/mL) measured in ARCHIMEDIlife laboratory in Vienna of dried blood spot sample; pro-BNP, (normal 0–900 ng/L); SAM, TnT, (normal 0–15 ng/L) (*normal 0–0.1 ug/L); U-Alb, (normal 0–25 mg/L). BNP, brain natriuretic peptide; CMR, cardiac MR; eGFR, estimated glomerular filtration rate; IVS, interventricular septum; LGE, late gadolinium enhancement; LVEDVI, Left Ventricular End-Diastolic Volume Index; LVESVI, Left Ventricular End-Systolic Volume Index; Lyso-Gb₃, globotriaosylsphingosine; SAM, systolic anterior movement; TnT, troponin; U-Alb, urine albumin.

Alpha-galactosidase A activity and lyso-Gb₃ levels

The FD-related biomarkers of the family members with the T410A/*GLA* mutation are summarised in table 1. All family members with T410A/*GLA* (n=6) had low or immeasurable α -Gal A activities compatible with FD. The females (n=3) had some own α -Gal A activity varying from 8 to 32% of normal. α -Gal A activity of the son of the index was measured four times and varied from 0% to 26.5%. His last measurement (14% from DBS sample)

was performed recently, when he had been on ERT for years. The two great grandsons had no active α -Gal A.

Lyso-Gb₃ levels were elevated in all six mutation carriers. Lyso-Gb₃ levels of the females were slightly elevated. In the index patient, measurement was performed only once when she was already on ERT (tables 1 and 2). The son had elevated lyso-Gb₃ levels up to 13.1 ng/mL during the ERT. Both great grandsons had elevated lyso-Gb₃ levels up to 20–27 ng/mL before starting ERT.

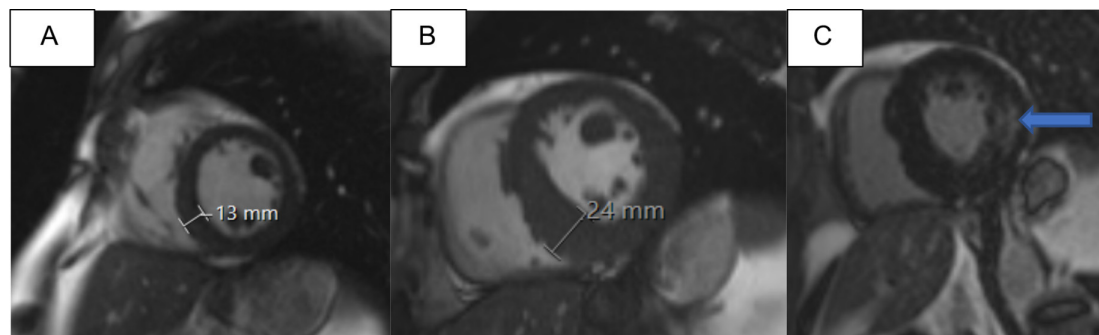


Figure 4 (A–C) Cardiomyopathy of the male in his 40s with T410A/*GLA* progressed when he was on enzyme replacement therapy (ERT). At baseline, CMR derived left ventricular (LV) maximal thickness was 13 mm (A) and no late gadolinium enhancement (LGE) was seen at baseline, but 11 years later LV thickness was 24 mm (B) and intramyocardial LGE was seen in the typical basal inferolateral area (C, arrow). CMR, cardiac MR.

Table 3 Lyso-Gb3 and analogue levels in plasma of the family members with *GLA*-Thr410Ala mutation

	Son of the index with cardiomyopathy	Elder granddaughter with incipient cardiomyopathy	Elder great grandson	Younger great grandson	Reference values
Lyso-Gb ₃ (nM)	12.6	7.7	4	5.3	2.4
Lyso-Gb ₃ (-28) (nM)	0.4	0.2	0.1	0.2	nd
Lyso-Gb ₃ (-2) (nM)	3.1	1	1.1	0.7	0.9
Lyso-Gb ₃ (+16) (nM)	1.4	0.4	nd	nd	nd
Lyso-Gb ₃ (+18) (nM)	1.7	1	0.6	0.9	nd
Lyso-Gb ₃ (+34) (nM)	0.9	1	0.3	0.3	0.3
Lyso-Gb ₃ (+50) (nM)	nd	nd	nd	nd	nd

Note: green values are under the limit of quantification, but over the limit of detection; bold values are over the reference limit; the males were treated with enzyme replacement therapy. nd, not detected.

Tandem mass spectrometry for plasma and urine lyso-Gb₃ analogues

Profiles of plasma lyso-Gb₃ analogues showed high levels of total lyso-Gb₃ and all but one its analogues in the male carrier with FC (tables 3 and 4). Also in heterozygous female, levels of total and all but one of the analogues were increased, but to lesser extent than in the elder male. In contrast, both young males with classic phenotype had plasma profiles with only slight or nondetectable changes in analogue levels. In the elder male, urine levels of total lyso-Gb₃ and all but two of its analogues were abnormally high. In young males, levels of all but one analogues were increased with a pattern of not very different from that of the elder male.

DISCUSSION

Principal findings

In the present family study, we showed that T410A/*GLA* causes classic FD in two young males and late-onset FD with cardiomyopathy in a middle-aged male, which, to our knowledge, is a novel finding. The phenotype in males was related to α -Gal A activity, lyso-Gb₃ levels and

profile of lyso-Gb₃ analogues, implying the importance of these biomarkers in phenotypic diversity of FD.

In addition, in the middle-aged male with residual enzyme activity, FC progressed during normal-dose ERT and other recommended medications for FC, and the patient suffered SCD due to cardiomyopathy.

In the context of the current literature

T410/*GLA* variant

T410/*GLA* variant is a rare mutation not recorded on the gnomAD database, but has been classified as pathogenic on the ClinVar database, and is classified amenable mutation for migalastat treatment (www.galafoldamenabilitytable.com). There is only two earlier publications on the variant found in PubMed, one reporting a Chinese family with five T410A/*GLA* carriers,²⁶ including three hemizygous males all having classical type of FD with neuropathic pain from their teens. The male in his 30s had also LVH, which was not present in two adolescent males. The α -Gal A activities in the males varied from 7% to 17% of normal value. Two females carrying T410A/*GLA* had normal α -Gal A activities and no symptoms of FD. On FD

Table 4 Lyso-Gb3 and analogue levels in urine of the males with *GLA*-Thr410Ala mutation

	Son of the index with cardiomyopathy	Elder great grandson	Younger great grandson	Reference values
Lyso-Gb ₃ (pmol/mmol creat.)	10	nd	nd	0
Lyso-Gb ₃ (-28) pmol/mmol creat.	4	4	6	0
Lyso-Gb ₃ (-12) pmol/mmol creat.	15	19	21	0
Lyso-Gb ₃ (-2) pmol/mmol creat.	6	5	4	0
Lyso-Gb ₃ (+14) pmol/mmol creat.	6	7	5	0
Lyso-Gb ₃ (+16) pmol/mmol creat.	57	44	37	25
Lyso-Gb ₃ (+34) pmol/mmol creat.	16	33	34	20
Lyso-Gb ₃ (+50) pmol/mmol creat.	25	27	26	85

Note: green values are under the limit of quantification, but over the limit of detection; bold values are over the reference limit; the patients were treated with enzyme replacement therapy. nd, not detected.

screening in Taiwanese cohort of patients with chronic kidney disease, T410A/*GLA* was found in two males with classic phenotype.²⁷

In the present study, the molecular structure analysis of the T410A mutated *GLA* protein suggested disturbed folding, further supporting pathogenicity of T410A/*GLA*. T410A/*GLA* was found in the index patient, but not in her four siblings, suggesting that the mutation has arisen *de novo*, which is common in FD.⁶ In all six mutation carriers, T410A/*GLA* caused zero to low enzyme activity levels, and clinical FD in 5 of 6. The two young males with no active α -Gal A had classic FD symptoms starting from age under 10. In contrast, their grandfather with residual α -Gal A activity had typical late-onset FC characterised by cardiomyopathy without history of any symptoms of FD in childhood or adolescence. Females with residual α -Gal A activity had typical late-onset FD with cardiomyopathy. To our knowledge, there are no previous reports showing that the same missense mutation causes both late-onset and classic form of FD in male carriers of the same family.

SCD in FD

According to a systematic review on 13 studies with over 4000 FD patients, 75% of deaths during the 1.2–10 years of follow-up were due to cardiovascular causes, of which 62% were SCDs. The risk factors associated with SCD were age (over 40 years in males), male gender, LVH, LGE in CMR and non-sustained ventricular tachycardia.²⁸ So far, there are no clear models for risk prediction in FC. Using the HCM Risk-SCD Calculator by the ESC is not recommended in FC.²⁹ In the present study, the male with progressive FC and SCD had several risk factors, and transient symptoms of heart failure.

Possible mechanisms for variable phenotype in males carrying T410A/*GLA*

Additional genetic factors

To exclude other gene variants contributing to FD phenotype in the family, we performed comprehensive genetic studies, including comprehensive cardiomyopathy panels and sequencing of whole coding region and deep intronic variants of *GLA*. The only pathogenic variant causing FD and cardiomyopathy in this Finnish family was T410A/*GLA*.

Alpha-galactosidase A enzyme activity

Family members with T410A/*GLA* had low or immeasurable α -Gal A activities, compatible with FD. α -Gal A activity in the young males was 0%, and they had classic FD. The middle-aged son of the index patient had variable α -Gal A activity in several measurements and late-onset disease. α -Gal A activity may have varied depending on the different methods used, technical variability in enzyme assays, enzyme instability or metabolism changes. Phenotypic presentation may vary in family members depending on α -Gal A activity.

Levels of lyso-Gb₃ and its analogues

Levels of plasma lyso-Gb₃ analogues were markedly elevated in the elder male with FC and in the heterozygous female with incipient FC. In contrast, in both young males with classic phenotype but no FC, plasma lyso-Gb₃ analogues were only slightly elevated. Consequently, as suggested by previous studies lyso-Gb₃ analogues may reflect and even modify the phenotype, including cardiomyopathy, in FD.^{14–16}

Clinical implications

First, measuring α -Gal A activity, lyso-Gb₃ and possibly also its analogues is important in patients with FD, as phenotypic presentation and progression of the disease may vary depending on the level of biomarkers. We recommend to investigate a complete biomarker profile of lyso-Gb₃ and its analogues. Second, regular CMR at least every 2–3 years³⁰ is important in adult subjects with FD irrespective of ERT to recognise progression of FC. Third, in FD patients with progressive LVH and risk factors for SCD, consideration of implantable cardioverter-defibrillator is worthwhile. Finally, in the future, systematic studies to develop SCD risk calculator for FC are needed.

Future perspectives

Future studies are required to investigate the factors influencing α -Gal A activity, lyso-Gb₃ levels and its analogues *in vivo* in carriers of FD causing mutations, and the relation of these biomarkers with clinical phenotype and progression of the disease.

CONCLUSIONS

The missense mutation T410A/*GLA* causes late-onset FD with cardiomyopathy not only in males but also in females, and classic FD in other males, probably depending on α -Gal A activity and levels of lyso-Gb₃ and its analogues.

Author affiliations

- ¹Heart Center, Kuopio University Hospital, Kuopio, Finland
- ²Diagnostic Imaging Center, Kuopio University Hospital, Kuopio, Finland
- ³Institute of Clinical Medicine, University of Eastern Finland Institute of Clinical Medicine, Kuopio, Finland
- ⁴Division of Medicine, Turku University Hospital, Turku, Finland
- ⁵Institute of Health Sciences, University of Eastern Finland Faculty of Health Sciences, Kuopio, Finland
- ⁶Faculty of Health Sciences, A.I.Virtanen Institute, University of Eastern Finland School of Medicine, Kuopio, Finland
- ⁷Department of Pediatrics, Division of Medical Genetics, Faculty of Medicine and Health Sciences, Université de Sherbrooke, Sherbrooke, Quebec, Canada
- ⁸Centre for Medicine and Clinical Research, Kuopio University Hospital, Kuopio, Finland
- ⁹Centre for Medicine and Clinical Research, University of Eastern Finland School of Medicine, Kuopio, Finland

Acknowledgements The authors would like to thank all participating pediatricians and Professor Markku Laakso for their co-operation.

Contributors KV: study, analysis, reporting, clinical examination, adult echo, writing the manuscript. MH: imaging analyses, revision of the manuscript. IK: study conception, revision of the manuscript. SW: patient data collection, revision of the manuscript. SH, MM and JR: genetic analyses, revision of the manuscript. CA-B: analysis of lyso-Gb₃ and its analogues, writing and revision of the manuscript.

JK: study conception, analysis, adult echo, writing and revision of the manuscript, guarantor.

Funding The study was supported by Sanofi, the Academy of Finland, the Finnish Heart Research Foundation and the Kuopio University Hospital (grants to JK)

Competing interests None declared.

Patient consent for publication Not applicable.

Ethics approval This study involves human participants and was approved by the Research Ethics Committee of the Northern Savo Hospital District 414/2016 Fabryn tauti Suomessa (FinFabry). Participants gave informed consent to participate in the study before taking part.

Provenance and peer review Not commissioned; externally peer reviewed.

Data availability statement Data are available on reasonable request.

Supplemental material This content has been supplied by the author(s). It has not been vetted by BMJ Publishing Group Limited (BMJ) and may not have been peer-reviewed. Any opinions or recommendations discussed are solely those of the author(s) and are not endorsed by BMJ. BMJ disclaims all liability and responsibility arising from any reliance placed on the content. Where the content includes any translated material, BMJ does not warrant the accuracy and reliability of the translations (including but not limited to local regulations, clinical guidelines, terminology, drug names and drug dosages), and is not responsible for any error and/or omissions arising from translation and adaptation or otherwise.

Open access This is an open access article distributed in accordance with the Creative Commons Attribution Non Commercial (CC BY-NC 4.0) license, which permits others to distribute, remix, adapt, build upon this work non-commercially, and license their derivative works on different terms, provided the original work is properly cited, appropriate credit is given, any changes made indicated, and the use is non-commercial. See: <http://creativecommons.org/licenses/by-nc/4.0/>.

ORCID iD

Johanna Kuusisto <http://orcid.org/0000-0001-6550-3176>

REFERENCES

- Mehta A, Clarke JTR, Giugliani R, et al. Natural course of Fabry disease: changing pattern of causes of death in Fos-Fabry outcome survey. *J Med Genet* 2009;46:548–52.
- Germain DP, Nicholls K, Giugliani R, et al. Efficacy of the pharmacologic chaperone migalastat in a subset of male patients with the classic phenotype of Fabry disease and migalastat-amenable variants: data from the phase 3 randomized, multicenter, double-blind clinical trial and extension study. *Genet Med* 2019;21:1987–97.
- Pan X, Ouyang Y, Wang Z, et al. Genotype: a crucial but not unique factor affecting the clinical phenotypes in Fabry disease. *PLoS One* 2016;11:e0161330.
- Hwu W-L, Chien Y-H, Lee N-C, et al. Newborn screening for Fabry disease in Taiwan reveals a high incidence of the later-onset Gla mutation c.936+919G > A (IVS4+919G > A). *Hum Mutat* 2009;30:1397–405.
- Arends M, Wanner C, Hughes D, et al. Characterization of classical and nonclassical Fabry disease: a multicenter study. *J Am Soc Nephrol* 2017;28:1631–41.
- Gal A, Hughes DA, Winchester B. Toward a consensus in the laboratory diagnostics of Fabry disease—recommendations of a European expert group. *J Inher Metab Dis* 2011;34:509–14.
- Echevarria L, Benistan K, Toussaint A, et al. X-Chromosome inactivation in female patients with Fabry disease. *Clin Genet* 2016;89:44–54.
- Ortiz A, Germain DP, Desnick RJ, et al. Fabry disease revisited: management and treatment recommendations for adult patients. *Mol Genet Metab* 2018;123:416–27.
- Effraimidis G, Feldt-Rasmussen U, Rasmussen ÅK, et al. Globotriaosylsphingosine (lyso-gb3) and analogues in plasma and urine of patients with Fabry disease and correlations with long-term treatment and genotypes in a nationwide female Danish cohort. *J Med Genet* 2021;58:692–700.
- Auray-Blais C, Boutin M, Gagnon R, et al. Urinary globotriaosylsphingosine-related biomarkers for Fabry disease targeted by metabolomics. *Anal Chem* 2012;84:2745–53.
- Lavoie P, Boutin M, Auray-Blais C. Multiplex analysis of novel urinary lyso-gb3-related biomarkers for fabry disease by tandem mass spectrometry. *Anal Chem* 2013;85:1743–52.
- Dupont FO, Gagnon R, Boutin M, et al. A metabolomic study reveals novel plasma lyso-gb3 analogs as fabry disease biomarkers. *Curr Med Chem* 2013;20:280–8.
- Boutin M, Auray-Blais C. Multiplex tandem mass spectrometry analysis of novel plasma lyso-gb₃-related analogues in fabry disease. *Anal Chem* 2014;86:3476–83.
- Ferreira S, Auray-Blais C, Boutin M, et al. Variations in the GLA gene correlate with globotriaosylceramide and globotriaosylsphingosine analog levels in urine and plasma. *Clin Chim Acta* 2015;447:96–104.
- Auray-Blais C, Lavoie P, Boutin M, et al. Biomarkers associated with clinical manifestations in fabry disease patients with a late-onset cardiac variant mutation. *Clin Chim Acta* 2017;466:185–93.
- Auray-Blais C, Blais C-M, Ramaswami U, et al. Urinary biomarker investigation in children with fabry disease using tandem mass spectrometry. *Clin Chim Acta* 2015;438:195–204.
- Elliott P, Baker R, Pasquale F, et al. Prevalence of Anderson-Fabry disease in patients with hypertrophic cardiomyopathy: the European Anderson-Fabry disease survey. *Heart* 2011;97:1957–60.
- Kantola I, Penttinen M, Nuutila P, et al. Fabry disease. *Duodecim* 2012;128:729–39.
- Golañ L, Goker-Alpan O, Holida M, et al. Evaluation of the efficacy and safety of three dosing regimens of agalsidase alfa enzyme replacement therapy in adults with Fabry disease. *Drug Des Devel Ther* 2015;9:3435–44.
- Vaz-Drago R, Custódio N, Carmo-Fonseca M. Deep intronic mutations and human disease. *Hum Genet* 2017;136:1093–111.
- Chang W-H, Niu D-M, Lu C-Y, et al. Modulation the alternative splicing of Gla (IVS4+919G > A) in Fabry disease. *PLoS One* 2017;12:e0175929.
- Palhais B, Dembic M, Sabaratnam R, et al. The prevalent deep intronic C. 639+919 G > a gla mutation causes pseudoexon activation and fabry disease by abolishing the binding of hnrnpa1 and hnrnp A2/B1 to a splicing silencer. *Mol Genet Metab* 2016;119:258–69.
- Higuchi T, Kobayashi M, Ogata J, et al. Identification of cryptic novel α -galactosidase a gene mutations: abnormal mRNA splicing and large deletions. *JIMD Rep* 2016;16:30:63–72.
- Gervas-Arruga J, Cebolla JJ, Irun P, et al. Increased glycolipid storage produced by the inheritance of A complex intronic haplotype in the α -galactosidase A (gla) gene. *BMC Genet* 2015;16:109.
- Valtola K, Nino-Quintero J, Hedman M, et al. Cardiomyopathy associated with the ala143thr variant of the α -galactosidase a gene. *Heart* 2020;106:609–15.
- Yang C-C, Lai L-W, Whitehair O, et al. Two novel mutations in the alpha-galactosidase a gene in Chinese patients with Fabry disease. *Clin Genet* 2003;63:205–9.
- Lin C-J, Chien Y-H, Lai T-S, et al. Results of Fabry disease screening in male pre-end stage renal disease patients with unknown etiology found through the platform of a chronic kidney disease education program in a Northern Taiwan medical center. *Kidney Blood Press Res* 2018;43:1636–45.
- Baig S, Edward NC, Kotecha D, et al. Ventricular arrhythmia and sudden cardiac death in Fabry disease: a systematic review of risk factors in clinical practice. *Europace* 2018;20:f153–61.
- Zeppenfeld K, Tfelt-Hansen J, de Riva M, et al. 2022 ESC guidelines for the management of patients with ventricular arrhythmias and the prevention of sudden cardiac death. *Eur Heart J* 2022;43:3997–4126.
- Linhart M, Doltra A, Acosta J, et al. Ventricular arrhythmia risk is associated with myocardial scar but not with response to cardiac resynchronization therapy. *Europace* 2020;22:1391–400.