

# openheart Performance of a Framingham cardiovascular risk model among Indians and Europeans in New Zealand and the role of body mass index and social deprivation

Kjersti Stormark Rabanal,<sup>1</sup> Haakon Eduard Meyer,<sup>1,2</sup> Romana Pylypchuk,<sup>3</sup> Suneela Mehta,<sup>3</sup> Randi Marie Selmer,<sup>1</sup> Rodney T Jackson<sup>3</sup>

► Additional material is published online only. To view, please visit the journal online (<http://dx.doi.org/10.1136/openhrt-2018-000821>).

**To cite:** Rabanal KS, Meyer HE, Pylypchuk R, *et al.* Performance of a Framingham cardiovascular risk model among Indians and Europeans in New Zealand and the role of body mass index and social deprivation. *Open Heart* 2018;**5**:e000821. doi:10.1136/openhrt-2018-000821

Received 13 March 2018

Revised 15 May 2018

Accepted 13 June 2018



© Author(s) (or their employer(s)) 2018. Re-use permitted under CC BY-NC. No commercial re-use. See rights and permissions. Published by BMJ.

<sup>1</sup>Division of Mental and Physical Health, Norwegian Institute of Public Health, Oslo, Norway

<sup>2</sup>Department of Community Medicine, Institute of Health and Society, University of Oslo, Oslo, Norway

<sup>3</sup>School of Population Health, University of Auckland, Auckland, New Zealand

## Correspondence to

MSc. Kjersti Stormark Rabanal; [kjersti.stormark.rabanal@fhi.no](mailto:kjersti.stormark.rabanal@fhi.no)

## ABSTRACT

**Objectives** To evaluate a Framingham 5-year cardiovascular disease (CVD) risk score in Indians and Europeans in New Zealand, and determine whether body mass index (BMI) and socioeconomic deprivation were independent predictors of CVD risk.

**Methods** We included Indians and Europeans, aged 30–74 years without prior CVD undergoing risk assessment in New Zealand primary care during 2002–2015 (n=256 446). Risk profiles included standard Framingham predictors (age, sex, systolic blood pressure, total cholesterol/high-density lipoprotein ratio, smoking and diabetes) and were linked with national CVD hospitalisations and mortality datasets. Discrimination was measured by the area under the receiver operating characteristics curve (AUC) and calibration examined graphically. We used Cox regression to study the impact of BMI and deprivation on the risk of CVD with and without adjustment for the Framingham score.

**Results** During follow-up, 8105 and 1156 CVD events occurred in Europeans and Indians, respectively. Higher AUCs of 0.76 were found in Indian men (95% CI 0.74 to 0.78) and women (95% CI 0.73 to 0.78) compared with 0.74 (95% CI 0.73 to 0.74) in European men and 0.72 (95% CI 0.71 to 0.73) in European women. Framingham was best calibrated in Indian men, and overestimated risk in Indian women and in Europeans. BMI and deprivation were positively associated with CVD, also after adjustment for the Framingham risk score, although the BMI association was attenuated.

**Conclusions** The Framingham risk model performed reasonably well in Indian men, but overestimated risk in Indian women and in Europeans. BMI and socioeconomic deprivation could be useful predictors in addition to a Framingham score.

## INTRODUCTION

South Asians (people originating from the Indian subcontinent) constitute almost a quarter of the world's population, and have a high burden of cardiovascular disease (CVD) compared with other ethnic groups.<sup>1</sup> International guidelines

## Key questions

### What is already known about this subject?

- South Asians have a high burden of cardiovascular disease (CVD) compared with other ethnic groups.
- Although many risk prediction models exist, most prediction models are derived based on information from Caucasian populations and few studies have examined the performance of cardiovascular risk models in South Asian populations.

### What does this study add?

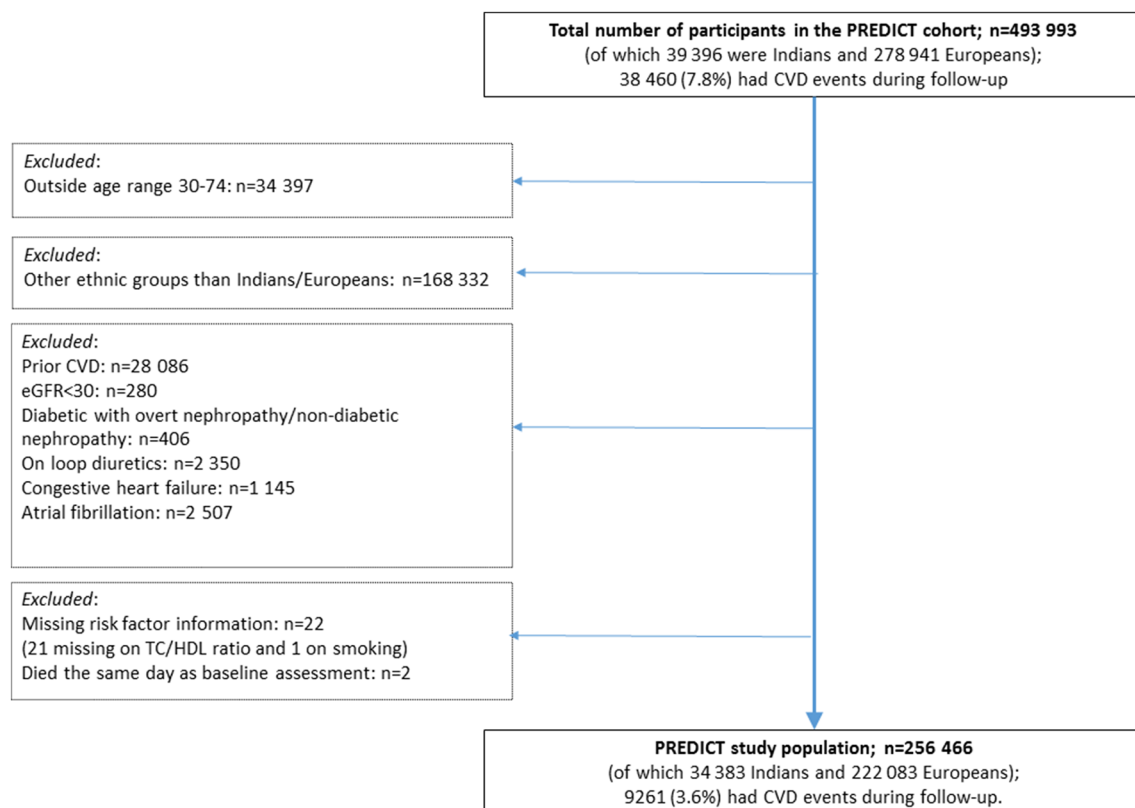
- Our study showed that a Framingham risk model predicted the 5-year risk of CVD in Indian men reasonably well, but overestimated risk in Indian women and in European men and women.
- We also found that BMI and deprivation could be useful predictors of CVD risk in addition to a Framingham risk score.

### How might this impact on clinical practice?

- Our findings demonstrate a need for improved methods for assessing cardiovascular risk in Europeans and Indians in New Zealand.

recommend calculation of absolute cardiovascular risk based on multiple risk factors.<sup>2–3</sup> Cardiovascular risk prediction models facilitate identification of high-risk patients and could help reduce the excess risk of CVD in South Asians. For a risk model to be clinically useful, however, it should be externally validated, ideally in the population where it is applied.<sup>4</sup> Few studies have evaluated the performance of cardiovascular risk models in South Asian populations.<sup>5</sup>

In the Auckland and Northland regions of New Zealand, cardiovascular risk assessments have been part of routine clinical care since the establishment of the PREDICT-CVD cohort in 2002.<sup>6</sup> A new



**Figure 1** Flow chart showing the numbers of persons at each stage of participant selection. CVD, cardiovascular disease; eGFR, estimated glomerular filtration rate; HDL, high-density lipoprotein; TC, total cholesterol.

CVD risk prediction equation for the New Zealand population has just been published,<sup>7</sup> but until recently, New Zealand guidelines<sup>2</sup> recommended general practitioners to use a modified 1991 Framingham risk equation<sup>8</sup> to predict patients' 5-year risk of developing CVD. This Framingham score is based on information collected >40 years ago in a cohort of white working-class and middle-class Americans.<sup>8</sup> The validity of Framingham for the contemporary New Zealand population has been questioned, especially regarding high-risk groups such as South Asians.<sup>6</sup> A previous validation study of the Framingham equation in ethnic groups in New Zealand lacked sufficient person-time follow-up to study the groups separately. Indian, Māori and Pacific people were therefore combined into one 'high-risk' group and analysed together.<sup>9</sup> Indians comprised only 11%–12% of this combined group.

We now have sufficient follow-up time to study the performance of the Framingham score in Indians in New Zealand. We therefore aimed to study the discrimination and calibration performance of the Framingham risk score among Indians and Europeans. Body mass index (BMI) and social deprivation are known CVD risk factors.<sup>10 11</sup> The second aim was to determine whether these factors improved CVD risk prediction over and above the Framingham score.

## METHODS

### Study population and study setting

The study population consisted of individuals risk assessed in New Zealand primary care between August 2002 and October 2015<sup>6</sup> using web-based decision support software called PREDICT. The PREDICT software was first implemented in Auckland general practices in 2002 and about 35%–40% of New Zealand general practices now use this software. It is mainly used in the Auckland and Northland regions, which represent around 38% of the New Zealand resident population.<sup>12</sup> The PREDICT study is an open cohort study continuously recruiting new participants whenever primary care practitioners complete standardised risk assessments using the PREDICT software. The study is described in detail elsewhere.<sup>6</sup> For these analyses, we included participants of South Asians or European ethnicity aged 30–74 years, with no history of CVD at baseline (individuals with CVD diagnosed solely in primary care, with a previous CVD hospitalisation or with congestive heart failure) (figure 1). This is a prospective cohort study, and the participants were followed until 31 December 2015.

### Risk factors

Systolic blood pressure (SBP) was based on the mean of the two last recordings done by primary care practitioners. Blood lipids, glucose or glycated haemoglobin measurements were undertaken in community laboratories

while smoking status and other risk factors were gathered on a standard electronic template completed by primary care practitioners. BMI was calculated as weight in kilograms divided by the square of height in metres ( $\text{kg}/\text{m}^2$ ). The exact time of the BMI measurement is unknown, but it was either at the time of the index risk assessment or before. The most recent BMI measure was used. We divided BMI into four categories: underweight ( $<18.5$ ), normal weight ( $18.5\text{--}24.9$ ), overweight ( $25.0\text{--}29.9$ ) and obesity ( $30+$ ). The New Zealand Index of Socioeconomic Deprivation (NZDep) is a New Zealand area-based socioeconomic deprivation score based on information from the national censuses using nine variables that reflect eight dimensions of deprivation (income, owned home, support, employment, qualifications, living space, communication and transport).<sup>13</sup> A deprivation score is provided for each meshblock in New Zealand. Meshblocks are geographical units defined by Statistics New Zealand. The New Zealand deprivation index relates to these small areas and not to individuals. The New Zealand deprivation index is presented as a decile score and is linked to most New Zealand health records. The deciles are based on the distribution of the first principal component score for the New Zealand deprivation index, where, decile 10 indicates residence in the 10% of the most deprived census meshblocks in New Zealand. For these analyses, we combined each set of two deciles to provide a quintile score (ie, quintile 1=deciles 1 and 2 (least deprived) through quintile 5=deciles 9 and 10 (most deprived)).

### Data linkage

Most New Zealanders (about 98%) have a unique National Health Identifier (NHI), assigned through contact with healthcare services in New Zealand.<sup>14</sup> An encrypted NHI was used to link the risk factor profiles from the PREDICT cohort with information from national health databases including all public hospitalisations, deaths, publicly funded drug dispensing and regional laboratory test results.<sup>6</sup>

### Definition of outcome

We identified first CVD events (fatal and non-fatal) through the national hospitalisation and mortality databases using International Classification of Disease-10-Australian Modification (ICD-10-AM) codes.<sup>15</sup> CVD included primary and secondary hospitalisation codes or underlying cause of death from one of the following conditions: coronary heart disease (CHD), congestive heart failure, haemorrhagic or ischaemic stroke, transient ischaemic attack, peripheral vascular disease and other CVD-related deaths. Online supplementary table A1 shows the corresponding ICD-10-AM codes.

### Ethnicity

Self-identified ethnicity data are routinely available for almost every New Zealander and came from the National Health Index dataset, coded according to predefined

categories. In the case of multiple recorded ethnicities, a prioritising algorithm was used.<sup>16</sup> The ethnicity coding system for health data in New Zealand enables identification of Indian people (including Fijian Indians), but not other South Asians (such as Sri Lankans, Pakistanis, Bangladeshis or Nepalese). However, Indians account for almost 90% of South Asians in New Zealand,<sup>17</sup> and the majority are immigrants.<sup>18</sup> The Indian ethnic group does not include other Asian ethnic subgroups such as Chinese or South East Asians.

### The Framingham risk score

We calculated the 5-year risk of CVD using a 1991 Framingham risk equation.<sup>8</sup> The Framingham predictors are age, sex, SBP, total cholesterol (TC)/high-density lipoprotein (HDL) ratio, smoking (yes/no) and diabetes (yes/no).<sup>8</sup> As recommended by the New Zealand Guidelines Group, individuals who recently quit smoking (within 12 months) were considered as smokers for the risk score.<sup>2</sup>

### Statistical analyses

We measured discrimination of the Framingham score (the ability of the score to differentiate between those who experience an event and those who do not) by the area under the receiver operating characteristics (ROC) curve (AUC).<sup>19</sup> We additionally calculated the Harrell's C to take censoring into account.<sup>20</sup> We present a calibration plot of predicted minus observed event rates (calculated by the life table method) within deciles of predicted risk. When evaluating the Framingham score performance, we restricted the follow-up to maximum 5 years (counting CVD events until 5 years after baseline and resetting the person-time to 5 years for those with  $>5$  years person-time at risk). We used Cox regression to study the impact of BMI and deprivation on the risk of CVD in Indians and Europeans with and without adjustment for the Framingham risk score. For these analyses, all available follow-up was included. Possible interaction was examined by including an interaction term in the Cox model. Only complete cases were analysed. We checked if inclusion of BMI or deprivation index in a 5-year prediction model based on Cox regression, improved AUC or Harrell's C compared with Framingham alone. Proportional hazards assumptions were tested using Schoenfeld residuals and log-log plots. All analyses were performed using Stata V.14.

### Sensitivity analyses

The younger participants in PREDICT have high levels of risk factors (results not shown). We therefore repeated the calibration analyses excluding men aged  $<45$  years and women aged  $<55$  years to see whether calibration altered. These sex-specific age cut-offs refer to the ages when risk assessment is currently recommended for the general New Zealand population (asymptomatic and without known risk factors).<sup>2</sup>

**Table 1** Baseline characteristics of study population, PREDICT, unadjusted

	Men		Women	
	European	Indian	European	Indian
N	126 736	20 210	95 347	14 173
Age in years, mean (SD)	54.4 (9.0)	46.2 (10.0)	58.8 (8.1)	52.2 (8.7)
TC/HDL ratio, mean (SD)	4.30 (1.2)	4.62 (1.2)	3.60 (1.1)	3.93 (1.0)
TC (mmol/L), mean (SD)	5.33 (1.0)	5.08 (1.0)	5.64 (1.0)	5.03 (1.0)
BMI, mean (SD)	28.5 (5.2)	26.9 (4.4)	28.1 (6.3)	28.0 (5.4)
Prevalence of obesity (BMI $\geq$ 30), %	31.1	18.9	31.2	30.1
Prevalence of overweight (BMI $\geq$ 25) %	78.0	66.5	65.5	70.9
SBP (mm Hg), mean (SD)	130.3 (15.9)	125.2 (15.9)	130.2 (17.2)	125.5 (17.6)
SBP $\geq$ 140 mm Hg, %	29.3	19.2	30.9	22.3
Diabetes				
Type 1, %	0.7	0.4	0.6	0.4
Type 2, %	7.4	23.0	7.1	28.2
Smoking				
Never, %	68.4	83.2	73.3	98.0
Former, %	17.9	6.4	15.8	0.9
Current*, %	13.8	10.3	10.9	1.2
Family history of CVD, %	12.4	8.7	15.6	8.9
Receiving antihypertensive treatment at baseline†, %	16.7	18.2	22.4	24.2
Receiving lipid-lowering treatment at baseline†, %	14.0	22.3	14.4	22.3
New Zealand deprivation index score, five quintiles‡				
Deprivation quintile 1 (least deprived), %	31.3	10.5	30.8	12.3
Deprivation quintile 2, %	24.1	17.1	23.7	18.4
Deprivation quintile 3, %	19.3	20.5	19.8	20.3
Deprivation quintile 4, %	15.1	28.9	15.7	27.5
Deprivation quintile 5 (most deprived), %	10.2	23.1	10.0	21.5
Years of follow-up (range)	4.1 (1 day–13.3 years)	4.1 (2 days–13.2 years)	4.2 (1 day–13.3 years)	4.1 (4 days–13.1 years)

\*Current smokers includes persons who recently quit (<12 months ago).

†Medication use at baseline is based on dispensing information within 6 months before baseline.

‡The quintiles are based on the distribution of the first principal component scores for the New Zealand Index of Socioeconomic Deprivation, where quintile 1 indicates residence in the 20% of the least deprived census meshblocks (geographic areas including approximately 80 people) in New Zealand.

BMI, body mass index; BP, blood pressure; CVD, cardiovascular disease; HDL, high-density lipoprotein; SBP, systolic blood pressure; TC, total cholesterol.

## RESULTS

### Participant numbers and CVD events

A total of 222 083 European (43% women) and 34 383 Indian (41% women) participants aged 30–74 years without prior CVD were enrolled in the PREDICT-CVD cohort between August 2002 and December 2015. The participants were followed for a mean of 4.2 years.

During the first 5 years of follow-up, we identified 6065 CVD events among Europeans and 886 CVD events among Indians. When all available follow-up time was included, 8105 CVD events occurred among Europeans and 1156 CVD events among Indians.

### Baseline characteristics

Women were older than men, and Indians around 6–8 years younger than Europeans (table 1); both age differences reflect New Zealand guideline recommendations that asymptomatic men should be risk assessed 10 years earlier than asymptomatic women and Indians 10 years earlier than Europeans.<sup>2</sup> TC/HDL ratios were higher in Indians than Europeans, and diabetes prevalence was more than threefold higher in Indians than Europeans. Ethnic differences in TC/HDL ratios and diabetes prevalence persisted after adjustment for age, although the differences in TC/HDL ratio diminished (not shown). Diabetes prevalence was high among the youngest



**Table 2** Mean values of Framingham 5-year risk scores and observed 5-year event rates

	Men		Women	
	European	Indian	European	Indian
N	126 736	20 210	95 347	14 173
Predicted Framingham 5-year event rates (95% CI)	7.1 (7.0 to 7.1)	4.7 (4.6 to 4.7)	4.6 (4.6 to 4.6)	4.0 (3.9 to 4.0)
No. of events during 5 years of follow-up	4038	623	2 027	263
Observed 5-year event rates (life tables) (95% CI)	4.9 (4.7 to 5.0)	4.7 (4.3 to 5.1)	3.3 (3.1 to 3.4)	3.0 (2.7 to 3.4)

Performance of the Framingham risk score.

participants (not shown), also reflecting guideline recommendations that people with known risk factors or at high risk of developing diabetes should be risk assessed 10 years earlier than others.<sup>21</sup> People with diabetes generally have a risk assessment at the time of diagnosis and are thus automatically included in the PREDICT cohort, whatever their age.<sup>21</sup> Indians had lower mean SBP than Europeans, but these ethnic differences became smaller after adjustment for age (after adjusting for age the difference between the ethnic groups was 2.2 mm Hg in men and 1.5 mm Hg in women). Indians smoked less than Europeans, with minimal recorded smoking among Indian women.

Indian men had lower mean levels of BMI and were less overweight or obese than European men while Indian and European women had similar BMI levels (table 1). Indians lived in more deprived areas than Europeans with around 50% belonging to the two most deprived quintiles (quintiles 4–5). For Europeans, this percentage was around 25%.

### Predicted and observed risk

Europeans had higher Framingham predicted 5-year risk than Indian participants (table 2); however, this largely reflected their older age, especially men. The observed 5-year event rates were lower than the predicted rates in all groups except Indian men where the observed and predicted event rates were similar. The observed 5-year event rates were similar in the two ethnic groups despite Europeans being considerably older than Indians.

The Framingham score discriminated better in Indians than in Europeans with AUCs of 0.76 in Indian men and women (table 3) compared with 0.74 in European men and 0.72 in European women. Harrell's C was slightly lower than the AUC for all subgroups. The Harrell's C

was also higher in Indians than in Europeans, with the highest value of 0.75 (95% CI 0.73 to 0.77) in Indian men.

The calibration plot (figure 2) showed that the Framingham 5-year risk score generally overestimated risk in higher deciles of predicted risk, especially in Europeans. The best correspondence between predicted and observed event rates was seen in Indian men.

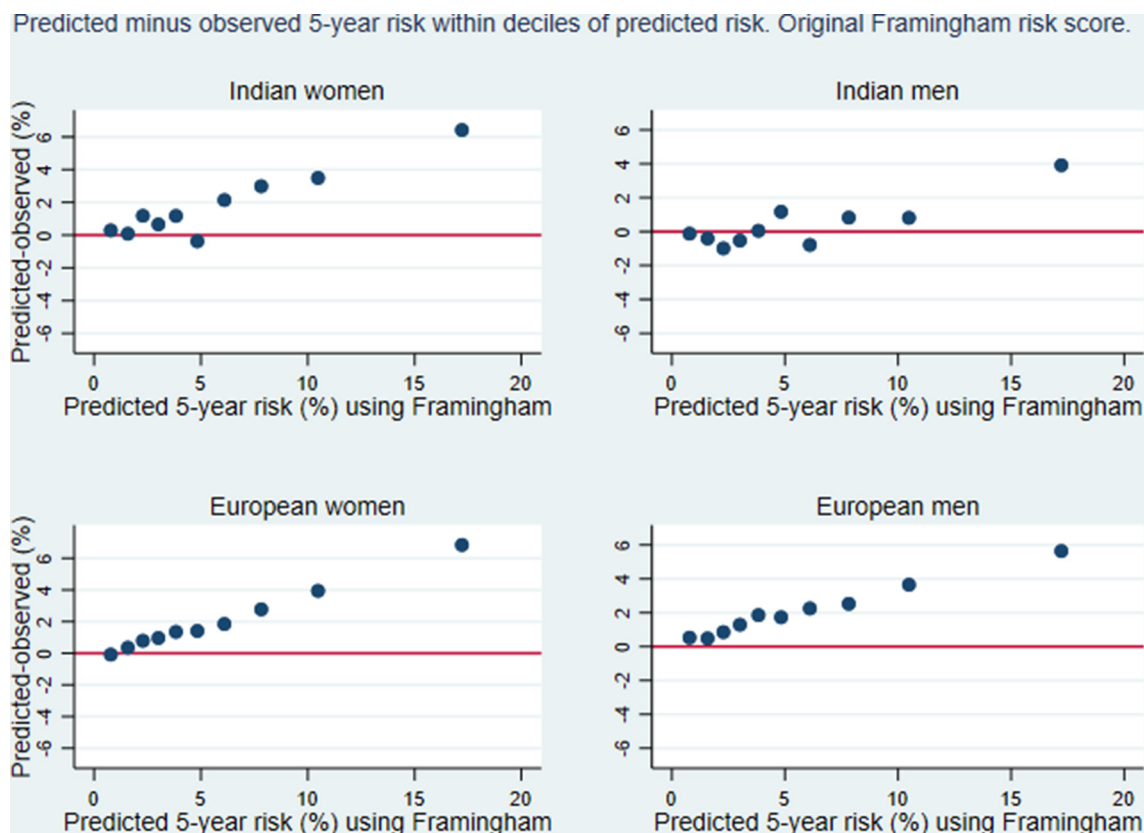
In age-adjusted analyses, BMI was significantly associated with risk of CVD in both ethnic groups (table 4). From BMI ≥ 18.5, we found an increasing risk of CVD with increasing BMI in both categorical and continuous analyses. After adjustment for the Framingham risk score, the continuous BMI (≥ 18.5) measure remained statistically significant in European men and Indian men and was borderline significant for Indian women. The HRs for this association for both Indian men and Indian women were more than double those for Europeans. However, the CIs were wide and overlapping, and there were no significant interaction between ethnicity and BMI on the risk of CVD. The categorical analyses only showed a statistically significant positive association between overweight or obesity and CVD in Indian women. Being underweight (BMI < 18.5) compared with being normal weight was associated with a significantly increased risk of CVD in Europeans, which remained after adjustment for the Framingham risk score. Inclusion of BMI in the model did not increase the AUC compared with the Framingham score alone (not shown).

Quintiles of socioeconomic deprivation showed a linear association with CVD in both ethnic groups with increasing age-adjusted HRs with increasing deprivation (table 5). Compared with the least deprived quintile, the four highest deprivation quintiles (quintiles 2–5) were significantly associated with increased risk of CVD in Europeans. We found a similar pattern for Indians, although the estimates were generally lower than in Europeans and the CIs were wider. After adjusting for Framingham, all HRs were attenuated. However, the general pattern for the association between area deprivation and CVD remained in all subgroups after adjustment for Framingham. The HR for the continuous deprivation variable also remained statistically significant in all subgroups. Inclusion of deprivation index in the model did not increase the AUC compared with the Framingham alone (not shown).

**Table 3** Discrimination ability of the Framingham (1991) model

	Men		Women	
	European	Indian	European	Indian
AUC	0.74	0.76	0.72	0.76
(95% CI)	(0.73 to 0.74)	(0.74 to 0.78)	(0.71 to 0.73)	(0.73 to 0.78)
Harrell's C	0.72	0.75	0.70	0.73
(95% CI)	(0.71 to 0.73)	(0.73 to 0.77)	(0.69 to 0.71)	(0.70 to 0.76)

AUC, area under the curve.



**Figure 2** Calibration plot showing predicted minus observed 5-year event rates within deciles of predicted risk using the original Framingham risk score by Anderson et al 1991.

### Sensitivity analyses

The sensitivity analyses excluding men aged <45 years and women aged <55 years showed similar calibration (not shown).

### DISCUSSION

This study showed that a Framingham CVD risk score based on risk factor information collected over 40 years ago<sup>8</sup> predicted the 5-year risk of CVD reasonably well in Indian men currently living in New Zealand. However, the Framingham score overestimated risk substantially in Indian women with predicted risk values of about 6% and above, and in European men and women in all but the two lowest deciles of predicted risk. Despite Indians being around 6–8 years younger than Europeans in the cohort, their observed 5-year CVD event rates were very similar to the observed 5-year CVD event rates in Europeans, consistent with the previously documented high burden of CVD in South Asians in New Zealand<sup>22</sup> and other countries.<sup>1 23</sup> We also found a positive association between increasing BMI (from BMI $\geq$ 18.5) and the risk of CVD in both ethnic groups which remained statistically significant in all the subgroups except European women after adjustment for the Framingham risk score. A consistent and strong association between area deprivation and the risk of CVD in both Indians and Europeans was also identified.

It has been recommended that researchers focus on external validation of existing models instead of deriving new prediction models as there is an abundance of CVD risk scores of unclear validity.<sup>24</sup> This study is one of few cohort studies to evaluate the performance of an existing CVD risk score in South Asians using measures of calibration and discrimination.<sup>5</sup> A recent review<sup>5</sup> identified only four studies that reported the performance of CVD risk models in South Asians (published in English during January 2000–April 2014) and we have only been able to find one relevant study published since then.<sup>25</sup> A cohort study from the UK<sup>26</sup> was the only study identified in this review<sup>5</sup> to provide statistical measures of model performance (discrimination and calibration). The UK study found that Framingham underestimated risk in South Asian women and performed reasonably well in South Asian men after a factor of 1.4 was added to the score.<sup>26</sup> Based on these findings,<sup>26</sup> the previously documented high burden of CVD in South Asians<sup>22</sup> and New Zealand guidelines recommendations to add 5% to the risk score for South Asians,<sup>2</sup> we would expect the Framingham risk score to underestimate risk among Indians in New Zealand. Instead, we found that Framingham overestimated the risk in Indian women and in Europeans of both genders. This overestimation of risk could partly be explained by medical treatment since those with a high predicted risk are most likely to be prescribed medication to reduce their absolute risk of CVD.<sup>21</sup> Moreover, the New

**Table 4** HRs (95% CI) for the prospective association between BMI and first CVD events

	N	CVD events	HR (95% CI)*	HR (95% CI)†
<b>European men</b>				
BMI categories				
<18.5	333	25	1.94 (1.31 to 2.89)	1.97 (1.33 to 2.94)
18.5–24.9	20 534	782	1.00 (ref)	1.00 (ref)
25–29.9	44 361	1936	1.11 (1.02 to 1.21)	0.99 (0.91 to 1.08)
30+	29 498	1622	1.45 (1.33 to 1.58)	1.06 (0.97 to 1.15)
Missing	32 010	890		
Total	126 736	5255		
BMI as continuous (per five unit increase)			1.13 (1.10 to 1.15)	1.04 (1.01 to 1.07)
BMI as continuous (per five unit increase) from BMI 18.5			1.13 (1.07 to 1.16)	1.04 (1.02 to 1.07)
<b>Indian men</b>				
BMI categories				
<18.5	129	6	1.13 (0.50 to 2.54)	1.37 (0.61 to 3.07)
18.5–24.9	5528	237	1.00 (ref)	1.00 (ref)
25–29.9	8044	342	1.03 (0.87 to 1.22)	0.92 (0.78 to 1.08)
30+	3193	168	1.34 (1.10 to 1.64)	1.09 (0.89 to 1.32)
Missing	3310	49		
Total	20 210	802		
BMI as continuous (per five unit increase)			1.17 (1.09 to 1.24)	1.09 (1.01 to 1.17)
BMI as continuous (per five unit increase) from BMI 18.5			1.17 (1.10 to 1.25)	1.09 (1.02 to 1.18)
<b>European women</b>				
BMI categories				
<18.5	889	52	2.39 (1.80 to 3.18)	2.62 (1.97 to 3.48)
18.5–24.9	22 864	574	1.00 (ref)	1.00 (ref)
25–29.9	23 524	751	1.11 (0.99 to 1.24)	0.98 (0.88 to 1.10)
30+	21 464	845	1.46 (1.31 to 1.62)	1.02 (0.92 to 1.14)
Missing	26 606	628		
Total	95 347	2850		
BMI as continuous (per five unit increase)			1.13 (1.09 to 1.16)	1.00 (0.97 to 1.03)
BMI as continuous (per five unit increase) from BMI 18.5			1.15 (1.12 to 1.18)	1.02 (0.99 to 1.06)
<b>Indian women</b>				
BMI categories				
<18.5	104	3	1.21 (0.38 to 3.85)	1.83 (0.57–5.83)
18.5–24.9	3319	60	1.00 (ref)	1.00 (ref)
25–29.9	4805	142	1.50 (1.11 to 2.03)	1.44 (1.07 to 1.95)
30+	3534	128	1.85 (1.36 to 2.52)	1.61 (1.18 to 2.18)
Missing	2411	21		
Total	14 173	354		
BMI as continuous (per five unit increase)			1.15 (1.06 to 1.25)	1.09 (0.99 to 1.19)
BMI as continuous (per five unit increase) from BMI 18.5			1.15 (1.06 to 1.25)	1.09 (1.00 to 1.19)

\*Adjusted for age.

†Adjusted for Framingham risk score.

BMI, body mass index; CVD, cardiovascular disease.

Zealand population is a low-risk population which has experienced declining rates of CHD<sup>27</sup> and stroke<sup>28</sup> during the past four decades. It is therefore not surprising that

the Framingham risk model derived from data collected over 40 years ago overpredicted the risk of CVD in European New Zealanders. The Framingham model, however,

**Table 5** HRs (95% CI) for the prospective association between area deprivation index score and first CVD events

European men	N	CVD events	HR (95% CI)*	HR (95% CI)†
Deprivation index first quintile‡ (least deprived)	39 670	1323	1.00 (ref)	1.00 (ref)
Deprivation index second quintile	30 499	1142	1.15 (1.06 to 1.25)	1.13 (1.04 to 1.22)
Deprivation index third quintile	24 467	1066	1.31 (1.21 to 1.42)	1.23 (1.13 to 1.33)
Deprivation index fourth quintile	19 183	950	1.46 (1.34 to 1.59)	1.34 (1.23 to 1.46)
Deprivation index fifth quintile (most deprived)	12 903	774	1.68 (1.54 to 1.84)	1.48 (1.35 to 1.62)
Deprivation index missing	14	0		
Total	126 736	5255		
Deprivation index as continuous (per two unit increase on the decile score)			1.14 (1.12 to 1.16)	1.10 (1.08 to 1.13)
Indian men				
Deprivation index first quintile (least deprived)	2115	73	1.00 (ref)	1.00 (ref)
Deprivation index second quintile	3455	108	0.92 (0.69 to 1.24)	0.92 (0.68 to 1.23)
Deprivation index third quintile	4143	146	1.13 (0.86 to 1.50)	1.08 (0.82 to 1.43)
Deprivation index fourth quintile	5838	241	1.33 (1.02 to 1.72)	1.25 (0.96 to 1.63)
Deprivation index fifth quintile (most deprived)	4659	234	1.59 (1.23 to 2.07)	1.48 (1.14 to 1.93)
Deprivation index missing	0	0		
Total	20 210	802		
Deprivation index as continuous (per two unit increase on the decile score)			1.16 (1.09 to 1.22)	1.13 (1.07 to 1.20)
European women				
Deprivation index first quintile (least deprived)	29 388	639	1.00 (ref)	1.00 (ref)
Deprivation index second quintile	22 587	623	1.24 (1.11 to 1.39)	1.20 (1.08 to 1.34)
Deprivation index third quintile	18 900	557	1.28 (1.15 to 1.44)	1.22 (1.09 to 1.36)
Deprivation index fourth quintile	14 919	532	1.51 (1.34 to 1.69)	1.39 (1.24 to 1.56)
Deprivation index fifth quintile (most deprived)	9545	499	2.00 (1.78 to 2.25)	1.76 (1.57 to 1.98)
Deprivation index missing	8	0		
Total	95 347	2 850		
Deprivation index as continuous (per two unit increase on the decile score)			1.17 (1.14 to 1.20)	1.13 (1.10 to 1.16)
Indian women				
Deprivation index first quintile (least deprived)	1737	31	1.00 (ref)	1.00 (ref)
Deprivation index second quintile	2609	47	0.92 (0.59 to 1.46)	0.91 (0.58 to 1.44)
Deprivation index third quintile	2876	67	1.30 (0.85 to 1.98)	1.28 (0.83 to 1.95)
Deprivation index fourth quintile	3899	112	1.55 (1.04 to 2.31)	1.41 (0.95 to 2.10)
Deprivation index fifth quintile (most deprived)	3051	97	1.60 (1.06 to 2.39)	1.47 (0.98 to 2.20)
Deprivation index missing	1	0		
Total	14 173	354		
Deprivation index as continuous (per two unit increase on the decile score)			1.17 (1.07 to 1.26)	1.13 (1.04 to 1.23)

\*Adjusted for age.

†Adjusted for Framingham risk score.

‡The quintiles are based on the distribution of the first principal component scores for the New Zealand Index of Socioeconomic Deprivation, where quintile 1 indicates residence in the 20% of the least deprived census meshblock areas in New Zealand.

CVD, cardiovascular disease.

was well calibrated in Indian men reflecting their previously observed increased risk.

In the present study, we found that BMI was positively associated with the risk of CVD in both Europeans and

Indians in all age-adjusted analyses. After adjusting for the Framingham risk score, the categorical analyses only showed a statistically significant positive association between overweight or obesity and CVD in Indian women,



whereas when BMI was analysed as a continuous variable, the association remained significant in European men and Indian men and women. Some of the risk related to a high BMI is mediated through blood pressure, cholesterol and glucose,<sup>11</sup> which are included in the Framingham risk score (where diabetes is included instead of glucose). This would explain why the association between BMI and CVD was attenuated after adjusting for Framingham. BMI is often regarded as a poor indicator of adiposity in South Asians, since South Asians have higher levels of body fat than Europeans at the same BMI levels,<sup>29</sup> yet we found that BMI was significantly associated with the risk of CVD in Indians and Europeans. It is possible that adiposity would prove even more important for the risk of CVD in Indians had we studied other adiposity measures such as waist-to-hip ratio. Unfortunately, this information was not available for the majority of the study participants. The higher HR point estimates for the association between increasing BMI ( $\geq 18.5$ ) and CVD in Indians than Europeans could imply a stronger association between BMI and CVD in Indians, concurring with the lower cut-offs for overweight (BMI  $> 23$ ) and obesity (BMI  $> 25$ ) that has been suggested for Asian Indians.<sup>30</sup> However, the CIs for the two ethnic groups were overlapping. The strong association between underweight and risk of CVD is likely due to comorbidities and possibly smoking-related weight loss.<sup>31</sup>

We found a similar and clear association between the New Zealand deprivation index and CVD risk in both Indians and Europeans. The association persisted after adjusting for the Framingham score in both ethnic groups suggesting that information about social deprivation should be considered in addition to Framingham when assessing risk of CVD in Indians and Europeans. The ASSIGN score from Scotland<sup>32</sup> and QRISK,<sup>33</sup> which is also from the UK, are examples of risk scores that have included similar area-based measures of deprivation. Framingham risk scores have previously been criticised for lacking socioeconomic predictors<sup>10</sup> and our findings support the inclusion of such information. The inclusion of BMI or deprivation did not improve the AUC measures compared with Framingham alone. However, the AUC is an insensitive measure when it comes to selection of variables to be included in a prediction model.<sup>19</sup>

### Strengths and limitations

A strength of this study is the large number of study participants and the completeness of risk factor information. Another strength is the identification of cardiovascular outcomes through comprehensive national health registers. We have also validated a well-known risk prediction model in a high-risk population in which the validity of available risk scores is largely unknown.

Since risk assessment was prioritised for high-risk patients, the PREDICT cohort may not be representative of the general New Zealand adult population. More importantly, however, the PREDICT cohort is representative of New Zealanders eligible for CVD risk assessment.

The New Zealand Ministry of Health has prioritised and incentivised heart and diabetes checks over the last 10 years through a nationally co-ordinated and funded programme.<sup>34</sup> Consequently, about 90% of all New Zealanders meeting national guideline eligibility criteria had CVD risk assessments between 2010 and 2015, and over 90% of eligible individuals in the primary health organisations using the PREDICT decision support software have been risk assessed. A limitation is the lack of individual measures of socioeconomic deprivation, and the lack of adiposity measures in addition to BMI, such as waist-to-hip ratio. Another limitation is that we could not distinguish between Indians born in New Zealand or overseas.

### CONCLUSIONS

Prospective information from 222 000 Europeans and 34 000 Indians showed that a Framingham risk model predicted the 5-year risk of CVD in Indian men reasonably well, but overestimated risk in Indian women and in European men and women. The study also showed that BMI and deprivation are potentially useful predictors of CVD risk over and above Framingham predictors. These findings demonstrate that improved methods for assessing risk in Europeans and Indians in New Zealand are warranted, particularly given the high burden of CVD among South Asians.

**Contributors** RTJ and HEM contributed to the conception and design of the work. RTJ was responsible for the collection of data. RP and SM contributed with definition of end points and preparation of the dataset. RMS provided ideas for analyses and contributed to the analysis of data. KSR drafted the paper and carried out the data analyses. All authors contributed to the interpretation of results as well as critical reading and revision of the draft. All authors approved the final manuscript for submission.

**Funding** This work was supported by the Norwegian Extra-Foundation for Health and Rehabilitation (grant number 2012-2-0129).

**Competing interests** RTJ and SM report grants from Health Research Council of New Zealand.

**Patient consent** Not required.

**Ethics approval** The PREDICT study was approved by the Northern Region Ethics Committee Y in 2003 (AKY/03/12/134), and later annually approved by the National Multiregion Ethics Committee since 2007 (MEC07/19/EXP).

**Provenance and peer review** Not commissioned; externally peer reviewed.

**Open access** This is an open access article distributed in accordance with the Creative Commons Attribution Non Commercial (CC BY-NC 4.0) license, which permits others to distribute, remix, adapt, build upon this work non-commercially, and license their derivative works on different terms, provided the original work is properly cited, appropriate credit is given, any changes made indicated, and the use is non-commercial. See: <http://creativecommons.org/licenses/by-nc/4.0/>.

### REFERENCES

1. Bhopal R. Epidemic of cardiovascular disease in South Asians. Prevention must start in childhood. *Editorials BMJ* 2002;324:625–6.
2. New Zealand Guideline Group. *The assessment and Management of Cardiovascular Risk*. Wellington, New Zealand: New Zealand Guideline Group, 2003.
3. Piepoli MF, Hoes AW, Agewall S, *et al*. 2016 European Guidelines on cardiovascular disease prevention in clinical practice: The Sixth Joint Task Force of the European Society of Cardiology and Other Societies on Cardiovascular Disease Prevention in Clinical Practice (constituted by representatives of 10 societies and by invited

- experts) Developed with the special contribution of the European Association for Cardiovascular Prevention & Rehabilitation (EACPR). *Eur Heart J* 2016;37:2315.
4. Altman DG, Vergouwe Y, Royston P, *et al.* Prognosis and prognostic research: validating a prognostic model. *BMJ* 2009;338:b605.
  5. Gopal DP, Usher-Smith JA. Cardiovascular risk models for South Asian populations: a systematic review. *Int J Public Health* 2016;61:525–34.
  6. Wells S, Riddell T, Kerr A, *et al.* Cohort Profile: The PREDICT Cardiovascular Disease Cohort in New Zealand Primary Care (PREDICT-CVD 19). *Int J Epidemiol* 2015;46.
  7. Pylypchuk R, Wells S, Kerr A, *et al.* Cardiovascular disease risk prediction equations in 400 000 primary care patients in New Zealand: a derivation and validation study. *Lancet* 2018;391:1897–907.
  8. Anderson KM, Odell PM, Wilson PW, *et al.* Cardiovascular disease risk profiles. *Am Heart J* 1991;121:293–8.
  9. Riddell T, Wells S, Jackson R, *et al.* Performance of Framingham cardiovascular risk scores by ethnic groups in New Zealand: PREDICT CVD-10. *N Z Med J* 2010;123:50–61.
  10. Fiscella K, Tancredi D, Franks P. Adding socioeconomic status to Framingham scoring to reduce disparities in coronary risk assessment. *Am Heart J* 2009;157:988–94.
  11. Lu Y, Hajifathalian K, Ezzati M, *et al.* Metabolic mediators of the effects of body-mass index, overweight, and obesity on coronary heart disease and stroke: a pooled analysis of 97 prospective cohorts with 1·8 million participants. *Lancet* 2014;383:970–83.
  12. Statistics New Zealand. Subnational population estimates (RC, AU), by age and sex, at 30 June 1996, 2001, 2006–16 (2017 boundaries). 2017. <http://nzdotstat.stats.govt.nz/wbos/Index.aspx?DataSetCode=TABLECODE7501>
  13. Department of Public Health. *Socioeconomic Deprivation Indexes: NZDep and NZiDep*. Wellington, New Zealand: University of Otago.
  14. Ministry of Health. National Health Index data dictionary. 2009. <http://www.health.govt.nz/publication/national-health-index-data-dictionary> (Updated 01 Feb 2012).
  15. Ministry of Health. *ICD-10-AM/ACHI/ACS*. Wellington, New Zealand: Ministry of Health.
  16. Ministry of Health. *HISO 10001:2017 Ethnicity Data Protocols*. Wellington, New Zealand: Ministry of Health, 2017.
  17. Statistics New Zealand. Census ethnic group profiles: Stats NZ Tauranga Aotearoa. 2013. [http://archive.stats.govt.nz/Census/2013-census/profile-and-summary-reports/ethnic-profiles.aspx?request\\_value=24726#24726](http://archive.stats.govt.nz/Census/2013-census/profile-and-summary-reports/ethnic-profiles.aspx?request_value=24726#24726)
  18. Statistics New Zealand. Tauranga Aotearoa. 2013 Census. Ethnic group profile: Indian. 2013. Retrieved 11 Sep 2015 [http://www.stats.govt.nz/Census/2013-census/profile-and-summary-reports/ethnic-profiles.aspx?request\\_value=24743&parent\\_id=24726&tabname=#](http://www.stats.govt.nz/Census/2013-census/profile-and-summary-reports/ethnic-profiles.aspx?request_value=24743&parent_id=24726&tabname=#)
  19. Cook NR. Use and misuse of the receiver operating characteristic curve in risk prediction. *Circulation* 2007;115:928–35.
  20. Pencina MJ, D'Agostino RB, Song L. Quantifying discrimination of Framingham risk functions with different survival C statistics. *Stat Med* 2012;31:1543–53.
  21. Ministry of Health. Cardiovascular Disease Risk Assessment. *New Zealand Primary Care Handbook 2012*. Wellington, New Zealand, 2013.
  22. Rabanal KS, Meyer HE, Tell GS, *et al.* Can traditional risk factors explain the higher risk of cardiovascular disease in South Asians compared to Europeans in Norway and New Zealand? Two cohort studies. *BMJ Open* 2017;7:e016819.
  23. Rabanal KS, Selmer RM, Igland J, *et al.* Ethnic inequalities in acute myocardial infarction and stroke rates in Norway 1994–2009: a nationwide cohort study (CVDNOR). *BMC Public Health* 2015;15:1073.
  24. Damen JA, Hooft L, Schuit E, *et al.* Prediction models for cardiovascular disease risk in the general population: systematic review. *BMJ* 2016;353:i2416.
  25. Joseph P, Yusuf S, Lee SF, *et al.* Prognostic validation of a non-laboratory and a laboratory based cardiovascular disease risk score in multiple regions of the world. *Heart* 2018;104:heartjnl-2017-311609.
  26. Tillin T, Hughes AD, Whincup P, *et al.* Ethnicity and prediction of cardiovascular disease: performance of QRISK2 and Framingham scores in a U.K. tri-ethnic prospective cohort study (SABRE–Southall And Brent REvisited). *Heart* 2014;100:60–7.
  27. Grey C, Jackson R, Wells S, *et al.* First and recurrent ischaemic heart disease events continue to decline in New Zealand, 2005–2015. *Heart* 2018;104.
  28. Feigin VL, Krishnamurthi RV, Barker-Collo S, *et al.* 30-Year Trends in Stroke Rates and Outcome in Auckland, New Zealand (1981–2012): A Multi-Ethnic Population-Based Series of Studies. *PLoS One* 2015;10:e0134609.
  29. Yajnik CS, Yudkin JS. The Y-Y paradox. *Lancet* 2004;363:163.
  30. Misra A, Chowbey P, Makkar BM, *et al.* Consensus statement for diagnosis of obesity, abdominal obesity and the metabolic syndrome for Asian Indians and recommendations for physical activity, medical and surgical management. *J Assoc Physicians India* 2009;57:163–70.
  31. Stokes A, Preston SH. Smoking and reverse causation create an obesity paradox in cardiovascular disease. *Obesity* 2015;23:2485–90.
  32. Woodward M, Brindle P, Tunstall-Pedoe H. SIGN group on risk estimation. Adding social deprivation and family history to cardiovascular risk assessment: the ASSIGN score from the Scottish Heart Health Extended Cohort (SHHEC). *Heart* 2007;93:172–6.
  33. Hippisley-Cox J, Coupland C, Vinogradova Y, *et al.* Derivation and validation of QRISK, a new cardiovascular disease risk score for the United Kingdom: prospective open cohort study. *BMJ* 2007;335:136.
  34. New Zealand Government. More Heart and Diabetes Checks Evaluation: Ministry of Health. 2016. <http://www.health.govt.nz/publication/more-heart-and-diabetes-checks-evaluation>